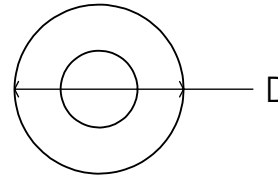
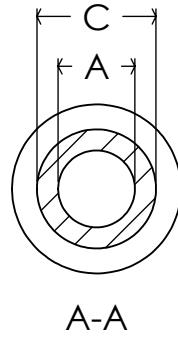
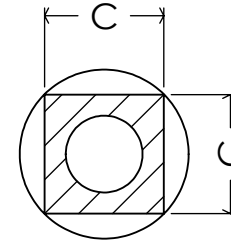


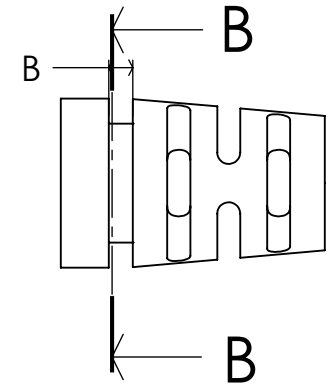
Round Slot



Front View



B-B



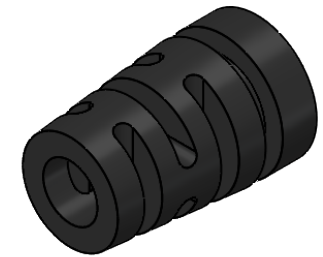
Square Slot

Body Style	Cable Size (Dim "A")	Slot Width (Dim "B")	Slot Shape (Dim "C")	Inner Flange Shape (Dim "D")
1461080	0.100	B or E	0.205	0.330
1461080	0.125	B or E	0.205	0.330
1461080	0.150	B or E	0.310	0.440
1461080	0.175	B or E	0.310	0.440
1461080	0.200	B or E	0.310	0.440
1461080	0.225	B or E	0.310	0.440
1461080	0.250	B or E	0.310	0.440
1461080	0.275	B or E	0.460	0.651
1461080	0.300	B or E	0.460	0.651
1461080	0.350	B or E	0.460	0.651
1461080	0.400	B or E	0.460	0.651
1461080	0.450	B or E	0.610	0.863
1461080	0.500	B or E	0.610	0.863
1461080	0.550	B or E	0.610	0.863
1461080	0.600	B or E	0.810	1.150

B=0.062 E=0.125

Body Style	Cable Size (Dim "A")	Slot Width (Dim "B")	Slot Shape (Dim "C")	Inner Flange Shape (Dim "D")
1461080	0.100	B or E	.205 X .205	0.330
1461080	0.125	B or E	.205 X .205	0.330
1461080	0.150	B or E	.310 X .310	0.440
1461080	0.175	B or E	.310 X .310	0.440
1461080	0.200	B or E	.310 X .310	0.440
1461080	0.225	B or E	.310 X .310	0.440
1461080	0.250	B or E	.310 X .310	0.440
1461080	0.275	B or E	.460 X .460	0.651
1461080	0.300	B or E	.460 X .460	0.651
1461080	0.350	B or E	.460 X .460	0.651
1461080	0.400	B or E	.460 X .460	0.651
1461080	0.450	B or E	.610 X .610	0.863
1461080	0.500	B or E	.610 X .610	0.863
1461080	0.550	B or E	.610 X .610	0.863
1461080	0.600	B or E	.810 X .810	1.150

B=0.062 E=0.125



- ISC P/N will be designated based off chosen list of dimensions
- Strain reliefs can be directly overmolded onto cable or an assembly
- Other materials and colors available as made-to-order parts

PROPRIETARY AND CONFIDENTIAL

THE INFORMATION CONTAINED IN THIS DRAWING IS THE SOLE PROPERTY OF ISC ENGINEERING. ANY REPRODUCTION IN PART OR AS A WHOLE WITHOUT THE WRITTEN PERMISSION OF ISC ENGINEERING IS PROHIBITED.

DIMENSIONS ARE IN INCHES
TOLERANCES: +/- .005"

MATERIAL
Black PVC, UL94-V2,A72

FINISH
ISC Std

DO NOT SCALE DRAWING

NAME	DATE
DRAWN	
CHECKED	
ENG APPR.	
MFG APPR.	
Q.A.	



ISC Engineering
4351 Schaefer Ave, Chino, CA 91710
Ph: 909-596-3315 Fax: 909-596-3335
www.iscengineering.com
www.overmoldtooling.com

Standard Strain Relief
Round, MultiFlex Design

SIZE A	DWG. NO. 1461080	REV. A
SCALE:	WEIGHT:	SHEET 1 OF 1