

Round Slot

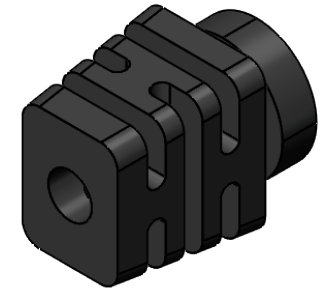
Square Slot

Body Style	Cable Size (Dim "A")	Slot Width (Dim "B")	Slot Shape (Dim "C")	Inner Flange Shape (Dim "D")
1465080	0.100	B or E	0.205	0.330
1465080	0.125	B or E	0.205	0.330
1465080	0.150	B or E	0.310	0.440
1465080	0.175	B or E	0.310	0.440
1465080	0.200	B or E	0.310	0.440
1465080	0.225	B or E	0.310	0.440
1465080	0.250	B or E	0.310	0.440
1465080	0.275	B or E	0.460	0.651
1465080	0.300	B or E	0.460	0.651
1465080	0.350	B or E	0.460	0.651
1465080	0.400	B or E	0.460	0.651
1465080	0.450	B or E	0.610	0.863
1465080	0.500	B or E	0.610	0.863
1465080	0.550	B or E	0.610	0.863
1465080	0.600	B or E	0.810	1.150

B=0.062 E=0.125

Body Style	Cable Size (Dim "A")	Slot Width (Dim "B")	Slot Shape (Dim "C")	Inner Flange Shape (Dim "D")
1465080	0.100	B or E	.205 X .205	0.330
1465080	0.125	B or E	.205 X .205	0.330
1465080	0.150	B or E	.310 X .310	0.440
1465080	0.175	B or E	.310 X .310	0.440
1465080	0.200	B or E	.310 X .310	0.440
1465080	0.225	B or E	.310 X .310	0.440
1465080	0.250	B or E	.310 X .310	0.440
1465080	0.275	B or E	.460 X .460	0.651
1465080	0.300	B or E	.460 X .460	0.651
1465080	0.350	B or E	.460 X .460	0.651
1465080	0.400	B or E	.460 X .460	0.651
1465080	0.450	B or E	.610 X .610	0.863
1465080	0.500	B or E	.610 X .610	0.863
1465080	0.550	B or E	.610 X .610	0.863
1465080	0.600	B or E	.810 X .810	1.150

B=0.062 E=0.125



-ISC P/N will be designated based off chosen list of dimensions  
 -Strain reliefs can be directly overmolded onto cable or an assembly  
 -Other materials and colors available as made-to-order parts

**PROPRIETARY AND CONFIDENTIAL**  
 THE INFORMATION CONTAINED IN THIS DRAWING IS THE SOLE PROPERTY OF ISC ENGINEERING. ANY REPRODUCTION IN PART OR AS A WHOLE WITHOUT THE WRITTEN PERMISSION OF ISC ENGINEERING IS PROHIBITED.

DIMENSIONS ARE IN INCHES  
 TOLERANCES: +/- .005"  
 MATERIAL  
 Black PVC, UL94-V2,A72  
 FINISH  
 ISC Std  
 DO NOT SCALE DRAWING

NAME	DATE
DRAWN	
CHECKED	
ENG APPR.	
MFG APPR.	
Q.A.	

ISC Engineering  
 4351 Schaefer Ave, Chino, CA 91710  
 Ph: 909-596-3315 Fax: 909-596-3335  
 www.iscengineering.com  
 www.overmoldtooling.com

In-Stock Strain Relief  
 Rectangular, MultiFlex Design



SIZE	DWG. NO.	REV.
A	1465080	B
SCALE:	WEIGHT:	SHEET 1 OF 1