



## Lightweight, High-Performance Aluminum D-Sub Backshells

ITT Cannon expands its robust portfolio of D-Subminiature solutions with new Aluminum D-Sub Backshells, catering to the increasing demand for weight reduction in harsh-environment applications.



Harsh-environment applications, from aerospace electrical and wiring interconnect systems (EWIS) to military vehicles and commercial satellites, are increasingly sensitive to weight considerations without compromising on Electromagnetic Interference (EMI) Shielding and maximum wire termination space and protection.

ITT Cannon's new aluminum backshell technology meets all harsh-environment performance requirements while providing over 50% weight reduction compared to traditional D-Sub backshells. This, combined with Cannon's robust portfolio of high-performance I/O solutions, provides customers with a full range of reliable solutions for cabled applications.

### Features & Benefits

- Straight, 45°, and 90° cable exit
- Optimal EMI shielding performance with minimal air gaps
- Innovative, lightweight A380 aluminum construction
- Electroless Nickel Plating
- 360° compression shielding
- Front mounting with #4-40 fillister head screws
- Side mount slots accommodating ty-wrap or #4-40 fillister head screws
- RoHS and REACH Compliant



## Markets



# Aluminum D-Sub Backshell Ordering Guide



	1- Series	2- Shell Size	3- Type	4- Orientation	5- Entry Size Code	6- Mounting Hardware Code
PN Example	D	E	BS	S	09	0

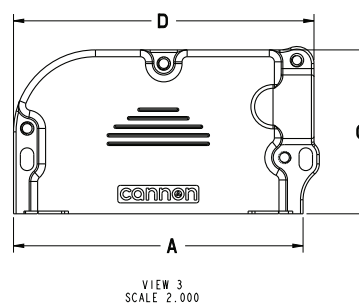
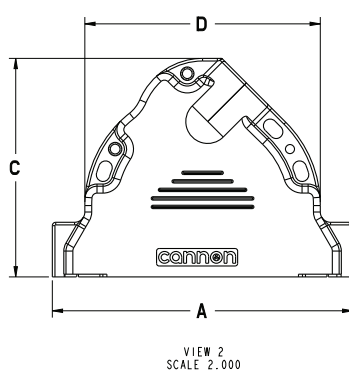
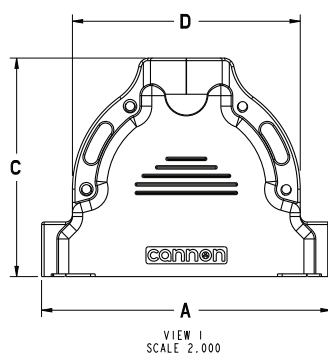
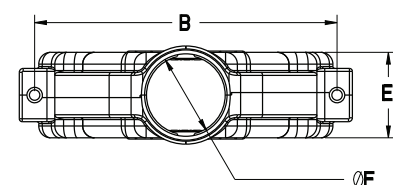
1- Series	
D	D-Subminiature
2- Shell Size	
E	Size 9 (MIL-DTL-24308 Size 1)
A	Size 15 (MIL-DTL-24308 Size 2)
B	Size 25 (MIL-DTL-24308 Size 3)
C	Size 37 (MIL-DTL-24308 Size 4)
D	Size 50 (MIL-DTL-24308 Size 5)

3- Type	
BS	Backshell
4- Orientation	
S	Straight Exit
A	45 Degree Exit
B	90 Degree Exit
5- Entry Size Code	
See Table Below	

6- Mounting Hardware Code	
0	Backshells & Closure Screws Only

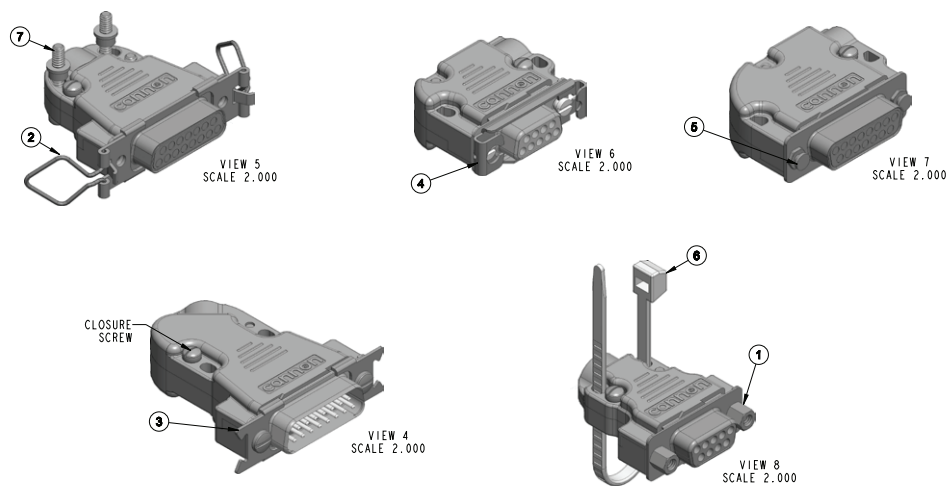
For additional mounting hardware and attachment codes, please see the following page.

If required, closure screws can be ordered separately.



Descriptive Part Number	Numerical Part Number	Size Code	Entry Code	Angle	A ± .06	B ± .010	C ± .06	D ± .06	E ± .06	ØF ± .02	Weight (g) Less Hardware	Tie Down Strap (SAE-AS33671)	Closure Screw QTY
DEBSS090	070372-0001	E	09	STR	1.23	.984	1.25	.75	.58	.35	10.4	-5	2
DEBSA090	070372-0002	E	09	45°	1.23	.984	1.50	.75	.58	.35	12.6	-5	2
DEBSB090	070372-0003	E	09	90°	1.23	.984	0.95	1.33	.58	.35	11.4	-5	2
DABSS090	070372-0004	A	09	STR	1.55	1.312	1.30	1.00	.51	.35	11.1	-5	2
DABSA090	070372-0005	A	09	45°	1.55	1.312	1.80	1.00	.58	.35	17.4	-5	2
DABSB090	070372-0006	A	09	90°	1.55	1.312	1.10	1.65	.58	.35	15	-5	2
DBBSS120	070372-0007	B	12	STR	2.10	1.852	1.80	1.48	.58	.47	20.2	-1	2
DBBSA120	070372-0008	B	12	45°	2.10	1.852	1.80	1.48	.58	.47	21.8	-1	3
DBBSB120	070372-0009	B	12	90°	2.10	1.852	1.20	2.20	.58	.47	18	-1	3
DCBSS150	070372-0010	C	15	STR	2.75	2.500	2.00	2.16	.58	.58	29.3	-1	4
DCBSA150	070372-0011	C	15	45°	2.75	2.500	2.00	2.16	.58	.58	27.9	-1	3
DCBSB150	070372-0012	C	15	90°	2.75	2.500	1.50	2.84	.58	.58	29.7	-1	3
DDBSS170	070372-0013	D	17	STR	2.65	2.406	2.00	2.09	.69	.65	29.9	-1	4
DDBSA170	070372-0014	D	17	45°	2.65	2.406	2.00	2.09	.69	.65	27.2	-1	3
DDBSB170	070372-0015	D	17	90°	2.65	2.406	1.50	2.75	.69	.65	32.7	-1	3

# Aluminum D-Sub Backshell Hardware



## Mounting Hardware Code

Code	Description	Descriptive Part Number	Numerical Part Number	Shell Size	Material
1	Jackpost Set (2)	D70372-16	070372-0016	E, A, B, C, D	Stainless Steel
2	Spring Latch Set	D70372-17	070372-0017	E, A, B, C	
		D70372-18	070372-0018	D	
3	Spring Latch Plate	D70372-19	070372-0019	E, A, B, C	
		D70372-20	070372-0020	D	
4	Slide Lock Plate With Screws	D70372-21	070372-0021	E	
		D70372-22	070372-0022	A	
		D70372-23	070372-0023	B	
		D70372-24	070372-0024	C	
		D70372-25	070372-0025	D	
5	Slide Lock Locking Posts	D70372-26	070372-0026	E, A, B, C, D	

## Attachment Option Code

Code	Description	Descriptive Part Number	Numerical Part Number	Shell Size	Material
6	Tie Down Strap	D70372-27	070372-0027	E, A	Nylon
		D70372-28	070372-0028	B, C, D	
7	Rack Mount Hardware, 4-40, Bushing Only (2 each)*	D70372-29	070372-0029	E, A, B, C, D	Aluminum, Nickel Plating

\*0.125" long through hole standoff for a 4-40 screw.

## Closure Screw Kits

Part Number	Package Quantity
070372-0045	2 Screws
070372-0046	3 Screws
070372-0047	4 Screws

# D-Subminiature Connectors



Invented by Cannon engineers in 1952 for aircraft radio systems, the D-Subminiature was designed as a smaller, lightweight rectangular alternative to larger, heavier connectors of the time. Today, Cannon continues its legacy of innovation through highly engineered D-Sub connector styles, sizes, configurations and accessories. From rocket launchers and telecommunications, to avionics and high-speed rail, its performance, reliability and versatility have made this Cannon invention one of the most widely used connectors in the world.



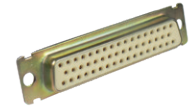
## Non-Magnetic Series

D\*M, D\*MM, D\*MA with NM, NMB option connectors are used when non magnetic characteristics are required.



## D\*H

Hermetic Military D connectors are designed to meet environmental conditions of extreme pressure differential.



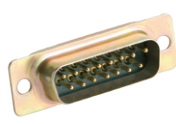
## MIL-DTL-24308\*

These high reliability D-Sub connectors are the finest quality and are qualified to MIL-DTL-24308.



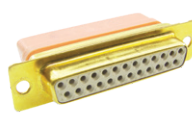
## D\*MAM

D\*MAM crimp connectors are designed according to MIL-DTL-24308.



## D\*MM

D\*MM straight PCB connectors are designed according to MIL-DTL-24308.



## GD\*

GD\* connectors provide high-density and moisture protection.



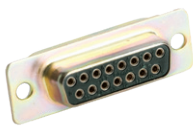
## 2D

2D connectors feature double the contact density in the same insert area.



## D\*MA

D\*MA crimp connectors are designed according to MIL-DTL-24308



## D\*M

D\*M straight PCB connectors are equivalent to MIL-DTL-24308 qualified versions (except for finishes).



## Stainless Steel

A broad range of D-Sub connectors are available with stainless steel shells for corrosion resistance.



## D\*NG

D\*NG pressfit connectors provide a low-cost alternative to traditional through hole solder contacts (straight only).



## D\*SF

Speedy D connectors terminate ribbon cables without stripping and without splicing.



## D\*U

D\*U is a low-cost, crimp type D-Subminiature series.



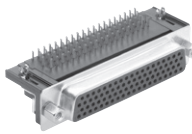
## D\*

D\* connectors are available for high performance uses according to DIN 41652.



## ZD\*

ZD\* connectors are available for applications where price is the primary driver.



## ZD\*A

ZD\*A high density connectors are available for applications where price is the primary driver.



## D\*A

D\*A crimp connectors are available for applications where price is the primary driver.



## Combo-D

Combo-D connectors offer an industry standard shield I/O interconnect, with the flexibility of a customized special.

Connect with your ITT Cannon representative today or visit us at [ittcannon.com](http://ittcannon.com)

Follow us

CHINA - Shenzhen City  
+86.755.2726.7888

FRANCE  
+33.1.60.04.93.93

GERMANY - Weinstadt  
+49.7151.699.0

HONG KONG  
+852.2732.2720

ITALY - Lainate  
+39.02938721

JAPAN - Kanagawa  
+81.462.57.2010

KOREA  
+82.2.702.7111

MEXICO - Nogales  
+52.631.3110050

SHANGHAI  
+ 86.21.2231.2222

SINGAPORE  
+65 66974205

UK - Basingstoke  
+44.1256.347400

USA - Irvine, CA  
+1.800.854.3028