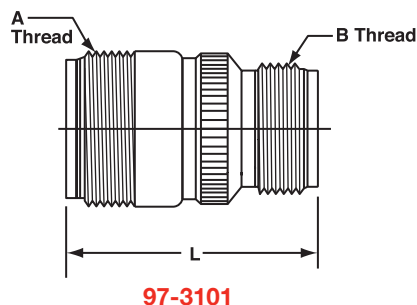
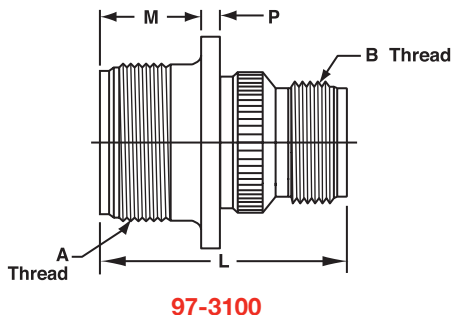
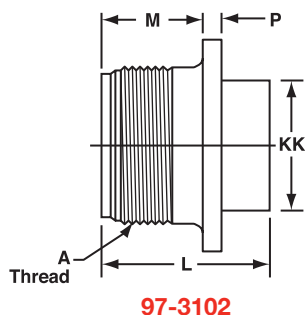
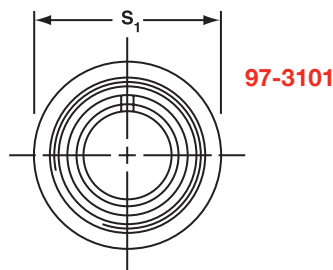
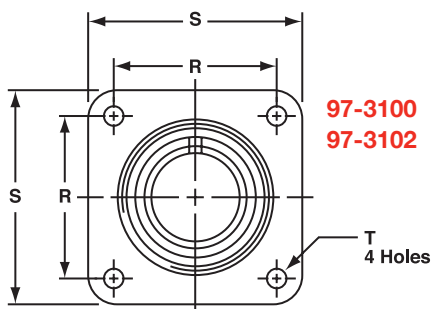


**RECEPTACLE STYLES**

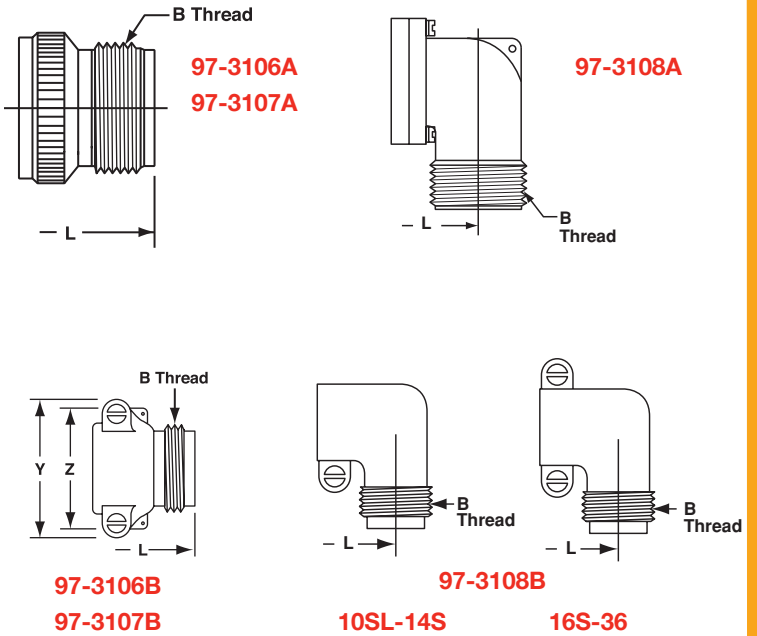
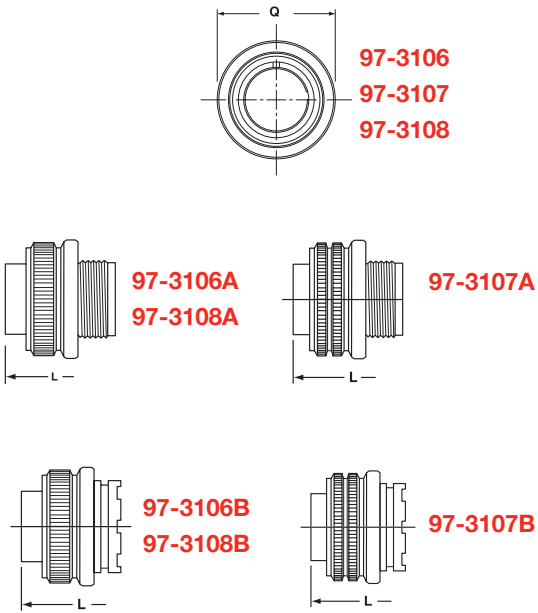


SHELL SIZE	97-3100A/97-3102A					A THREAD 2A	97-3102A		97-3100A	97-3101A		97-3100A/97-3101A B THREAD 2A
	M	P	R	S	T		L	KK	L	S <sub>1</sub>	L	
8S	0.56 (14.3)	0.078 (2.0)	0.59 (15.1)	0.88 (22.2)	0.120 (3.0)	1/2-28 UNEF	0.859 (21.8)	0.438 (11.1)	1.25 (31.8)	0.88 (22.2)	1.25 (31.8)	.5000-28 UNEF
10S	0.56 (14.3)	0.078 (2.0)	0.72 (18.3)	1.00 (25.4)	0.120 (3.0)	5/8-24 NEF	0.859 (21.8)	0.500 (12.7)	1.313 (33.3)	1.00 (25.4)	1.313 (33.3)	.5000-28 UNEF
10SL	0.56 (14.3)	0.078 (2.0)	0.72 (18.3)	1.00 (25.4)	0.120 (3.0)	5/8-24 NEF	0.953 (24.2)	0.688 (17.5)	1.281 (32.5)	1.00 (25.4)	1.281 (32.5)	.6250-24 UNEF
12S	0.56 (14.3)	0.078 (2.0)	0.81 (20.6)	1.09 (27.8)	0.120 (3.0)	3/4-20 UNEF	0.969 (24.6)	0.688 (17.5)	1.469 (37.3)	1.09 (27.8)	1.469 (37.3)	.6250-24 UNEF
12	0.75 (19.1)	0.078 (2.0)	0.81 (20.6)	1.09 (27.8)	0.120 (3.0)	3/4-20 UNEF	1.328 (33.7)	0.688 (17.5)	1.84 (46.8)	1.09 (27.8)	1.84 (46.8)	.6250-24 UNEF
12SL	0.56 (14.3)	0.078 (2.0)	0.81 (20.6)	1.09 (27.8)	0.120 (3.0)	3/4-20 UNEF	0.844 (21.4)	0.688 (17.5)	- (27.8)	1.09 (27.8)	-	.6250-24 UNEF
14S	0.56 (14.3)	0.078 (2.0)	0.91 (23.0)	1.185 (30.1)	0.120 (3.0)	7/8-20 UNEF	0.953 (24.2)	0.750 (19.1)	1.469 (37.3)	1.16 (29.5)	1.469 (37.3)	.7500-20 UNEF
16S	0.56 (14.3)	0.078 (2.0)	0.97 (24.6)	1.28 (32.5)	0.120 (3.0)	1-20 UNEF	0.953 (24.2)	0.875 (22.2)	1.469 (37.3)	1.28 (32.5)	1.469 (37.3)	.8750-20 UNEF
16	0.75 (19.1)	0.125 (3.2)	0.97 (24.6)	1.28 (32.5)	0.120 (3.0)	1-20 UNEF	1.375 (34.9)	0.875 (22.2)	1.891 (48.0)	1.28 (32.5)	1.891 (48.0)	.8750-20 UNEF
18	0.75 (19.1)	0.125 (3.2)	1.06 (27.0)	1.38 (34.9)	0.120 (3.0)	1 1/8-18 NEF	1.375 (34.9)	1.000 (25.4)	1.984 (50.4)	1.38 (34.9)	1.984 (50.4)	1.0000-20 UNEF
20	0.75 (19.1)	0.125 (3.2)	1.16 (29.4)	1.50 (38.1)	0.120 (3.0)	1 1/4-18 NEF	1.375 (34.9)	1.125 (28.6)	1.891 (48.0)	1.50 (38.1)	1.891 (48.0)	1.1875-18 UNEF
22	0.75 (19.1)	0.125 (3.2)	1.25 (31.8)	1.63 (41.3)	0.120 (3.0)	1 3/8-18 NEF	1.375 (34.9)	1.250 (31.8)	1.984 (50.4)	1.63 (41.3)	1.984 (50.4)	1.1875-18 UNEF
24	0.81 (20.6)	0.125 (3.2)	1.38 (34.9)	1.75 (44.5)	0.147 (3.7)	1 1/2-18 NEF	1.375 (34.9)	1.375 (34.9)	2.25 (57.2)	1.75 (44.5)	2.25 (57.2)	1.4375-18 UNEF
28	0.81 (20.6)	0.125 (3.2)	1.56 (39.7)	2.00 (50.8)	0.147 (3.7)	1 3/4-18 NS	1.375 (34.9)	1.625 (41.3)	2.25 (57.2)	2.00 (50.8)	2.25 (57.2)	1.4375-18 UNEF
32	0.88 (22.2)	0.125 (3.2)	1.75 (44.5)	2.25 (57.2)	0.173 (4.4)	2-18 NS	1.469 (37.3)	1.906 (48.4)	2.375 (60.3)	2.25 (57.2)	2.375 (60.3)	1.7500-18 UNS
36	0.88 (22.2)	0.125 (3.2)	1.94 (49.2)	2.50 (63.5)	0.173 (4.4)	2 1/4-16 UN	1.469 (37.3)	2.125 (54.0)	2.375 (60.3)	2.50 (63.5)	2.375 (60.3)	2.0000-18 UNS

All dimensions in inches (millimeters in parenthesis)

PLUG STYLES (BARREL ASSEMBLIES)

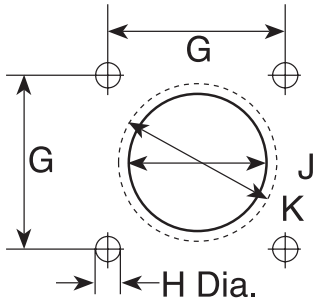
ENDBELL STYLES



SHELL SIZE	97-3106 97-3107 97-3108	97-3106A 97-3107A	97-3106B/97-3107B			97-3108A	97-3108B	B Thread 2A
	Q	L	L	Y	Z	L	L	
8S	0.75 (19.1)	1.25 (31.8)	-	-	-	-	-	.5000-28 UNEF
10S	0.88 (22.2)	1.31 (33.3)	-	-	-	1.25 (31.8)	1.38 (34.9)	.5000-28 UNEF
10SL	0.88 (22.2)	1.38 (35.1)	-	-	-	1.31 (33.3)	1.50 (38.1)	.6250-24 UNEF
12S	1.00 (25.4)	1.47 (37.3)	-	-	-	1.38 (34.9)	1.56 (39.7)	.6250-24 UNEF
12	1.00 (25.4)	1.84 (46.8)	-	-	-	1.22 (31.0)	1.88 (47.6)	.6250-24 UNEF
12SL	1.00 (25.4)	-	-	-	-	1.38 (34.9)	-	.7500-20 UNEF
14S	1.13 (28.6)	1.47 (37.3)	1.69 (42.9)	1.16 (29.4)	1.13 (28.6)	1.22 (31.0)	1.72 (43.7)	.7500-20 UNEF
16S	1.25 (31.8)	1.47 (37.3)	1.69 (42.9)	1.25 (31.8)	1.25 (31.8)	1.50 (38.1)	1.75 (44.5)	.8750-20 UNEF
16	1.25 (31.8)	1.89 (48.0)	-	-	-	1.94 (49.2)	2.13 (54.0)	.8750-20 UNEF
18	1.34 (34.1)	1.98 (50.4)	2.19 (55.6)	1.64 (41.7)	1.34 (34.1)	1.94 (49.2)	2.16 (54.8)	1.0000-20 UNEF
20	1.47 (37.3)	1.89 (48.0)	2.13 (54.0)	1.81 (46.0)	1.47 (37.3)	2.06 (52.4)	2.38 (60.3)	1.1875-18 UNEF
22	1.59 (40.5)	1.98 (50.3)	2.13 (54.0)	1.94 (49.2)	1.59 (40.5)	2.06 (52.4)	2.41 (61.1)	1.1875-18 UNEF
24	1.72 (43.7)	2.25 (57.2)	2.28 (57.9)	2.06 (52.4)	1.72 (43.7)	2.47 (62.7)	2.63 (66.7)	1.4375-18 UNEF
28	1.97 (50.0)	2.25 (57.2)	2.28 (57.9)	2.31 (58.8)	1.97 (50.0)	2.47 (62.7)	2.63 (66.7)	1.4375-18 UNEF
32	2.22 (56.4)	2.38 (60.3)	2.31 (58.8)	2.59 (65.9)	2.22 (56.4)	-	2.81 (71.4)	1.7500-18 UNS
36	2.47 (62.7)	2.38 (60.3)	2.34 (59.5)	2.84 (72.2)	2.47 (62.7)	-	2.84 (72.2)	2.0000-18 UNS

All dimensions in inches (millimeters in parenthesis)

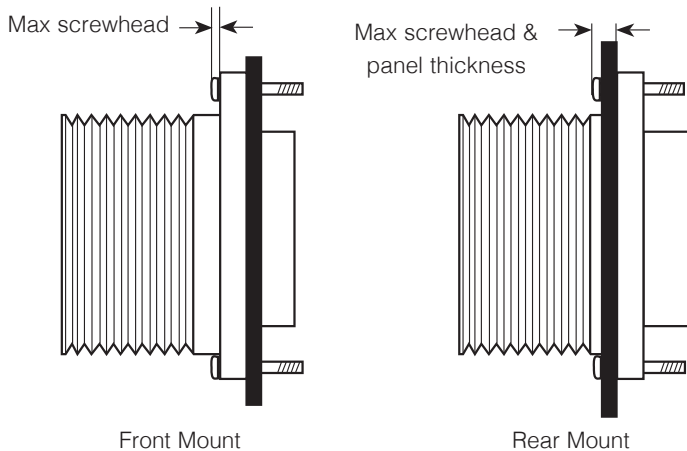
## PANEL CUTOUTS



Dimension J is flange in front of panel.  
Dimension K is flange at rear of panel.  
See sealing screws on [page 490](#).

SHELL SIZE	FLANGE STYLE 0-2-6B			
	G	MOUNTING HOLE DIAMETER	FRONT MOUNT	REAR MOUNT
		H	J	K
8S	0.594 (15.1)	0.134 (3.4)	0.396 (10.1)	0.603 (15.4)
10S/10SL	0.717 (18.2)	0.134 (3.4)	0.646 (16.4)	0.728 (18.5)
12S/12SL/12	0.811 (20.6)	0.134 (3.4)	0.646 (16.4)	0.854 (21.7)
14S	0.906 (23.0)	0.134 (3.4)	0.776 (19.7)	0.980 (24.9)
16S/16	0.969 (24.6)	0.134 (3.4)	0.902 (22.9)	1.091 (27.7)
18	1.063 (27.0)	0.134 (3.4)	1.028 (26.1)	1.224 (31.1)
20	1.157 (29.4)	0.134 (3.4)	1.161 (29.5)	1.358 (34.5)
22	1.252 (31.8)	0.134 (3.4)	1.287 (32.7)	1.488 (37.8)
24	1.374 (34.9)	0.154 (3.9)	1.417 (36.0)	1.626 (41.3)
28	1.563 (39.7)	0.154 (3.9)	1.654 (42.0)	1.854 (47.1)
32	1.752 (44.5)	0.177 (4.5)	1.902 (48.3)	2.118 (53.8)
36	1.937 (49.2)	0.177 (4.5)	2.150 (54.6)	2.362 (60.0)
40	2.185 (55.5)	0.177 (4.5)	2.409 (61.2)	2.610 (66.3)

## PANEL THICKNESS



SHELL SIZE	FRONT MOUNT	REAR MOUNT
8SL	.125 (3.18)	.125 (3.18)
10S		.125 (3.18)
10SL		.125 (3.18)
12S/12SL		.125 (3.18)
12		.187 (4.75)
14S		.187 (4.75)
16S		.187 (4.75)
16		.187 (4.75)
18		.187 (4.75)
20		.187 (4.75)
22		.187 (4.75)
24		.187 (4.75)
28		.187 (4.75)
32		.250 (6.35)
36		.250 (6.35)
40		.250 (6.35)

All dimensions in inches (millimeters in parenthesis)