

HOW TO ORDER - AMPHENOL RHINO

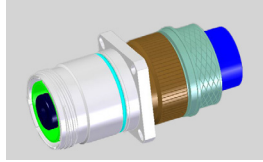
	1	2	3	4	5	6	7	8
WPTV-	07	ZN	17-185	-1	P	N	B	-W567
CONNECTOR TYPE	SHELL STYLE	FINISH	SHELL SIZE-AMPERAGE RATING	TERMINATION	CONTACT	POLARIZATION	BACKSHELL TYPE	MODIFIER

STEP 1: SELECT SHELL STYLE, PLUG OR RECEPTACLE

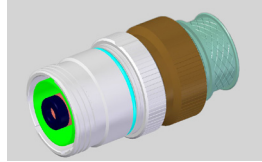
RECEPTACLES

Mates with

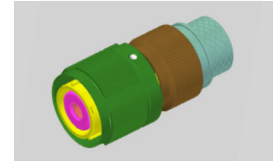
PLUGS



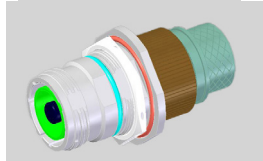
00
Wall Mount Receptacle



01
In-Line Receptacle



06
Cable Plug



07
Jam Nut Receptacle

STEP 2: SELECT FINISH

- ZN** = Black Zinc Nickel
- RB** = Marine Nickel Aluminum Bronze
- RW** = Olive Drab Chromate over Cadmium
- SS** = Stainless Steel
- RF** = Electroless Nickel

STEP 3: SELECT SHELL SIZE - AMPERAGE RATING

	SHELL SIZE	MAX. CURRENT RATING (A) @ 40° C	PIN CONTACT SIZE (MM)	CONTACT RESISTANCE (MΩ)	CONTACT MATING FORCE (N)
13-85	13	85A	3.6 mm	0.15	10
15-120	15	120A	6.0 mm	0.11	20
17-185	17	185A	8.0 mm	0.08	50
21-340	21	340A	10.0 mm	0.06	70
23-500	23	500A	14.0 mm	0.05	90
25-1000	25	1000A	18.0 mm	0.02	130

STEP 4: SELECT TERMINATION

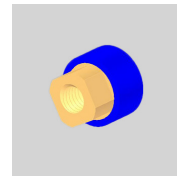
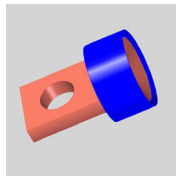
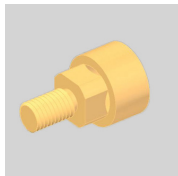


-1 = Crimp

-2 = Threaded Post

-3 Flat Tail with Cross Hole

-5 Tapped Hole with Locking Flats



-6 = Reduced Crimp

-7 = Extra Reduced Crimp

-8 Further Reduced Crimp

SHELL SIZE & CURRENT RATING	CONTACT TERMINATION	CRIMP BARREL BORE ID	MIN ACCEPTABLE CABLE CORE OD	APPROX. CABLE CURRENT RATING @ 40° C
13-85	-1	0.230 (05,84)	0.205 (05,20)	185A
	-6	0.191 (04,85)	0.157 (04,00)	140A
	-7	0.154 (03,91)	0.116 (02,95)	100A
15-120	-1	0.317 (08,05)	0.260 (06,60)	250A
	-6	0.230 (05,84)	0.205 (05,20)	185A
17-185	-1	0.423 (10,74)	0.362 (09,20)	395A
	-6	0.364 (09,25)	0.297 (07,55)	310A
21-340	-1	0.585 (14,86)	0.492 (12,50)	600A
	-6	0.498 (12,65)	0.439 (11,15)	500A
	-7	0.423 (10,74)	0.362 (09,20)	395A
23-500	-1	0.673 (17,09)	0.565 (14,35)	715A
	-6	0.585 (14,86)	0.492 (12,50)	600A
	-7	0.498 (12,65)	0.439 (11,15)	500A
	-8	0.423 (10,74)	0.362 (09,20)	395A
25-1000	-6	0.947 (24,05)	0.866 (22,00)	1115A
	-7	0.829 (21,06)	0.748 (19,00)	920A
	-8	0.752 (19,10)	0.669 (17,00)	810A
	-9	0.673 (17,09)	0.565 (14,35)	715A

STEP 5: SELECT CONTACT



P = Pin

S = Socket

STEP 6: SELECT POLARIZATION

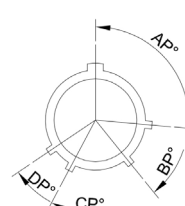
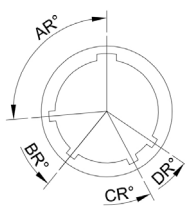


SHELL SIZE	MINOR KEY LOCATION				
	AR & AP	BR & BP	CR & CP	DR & DP	
13 & 15	N	95	141	208	236
	A	113	156	182	292
	B	90	145	195	252
	C	53	156	220	255
	D	119	146	176	298
17 & 21 & 23 & 25	E	51	141	184	242
	N	80	142	196	293
	A	135	170	200	310
	B	49	169	200	244
	C	66	140	200	257
	D	62	145	180	280
	E	79	153	197	272

RECEPTACLE

PLUG

Keyway Orientation



- N = Normal Standard
- A = Highly Popular
- B = Limited Availability
- C = Check for Availability
- D = Check for Availability

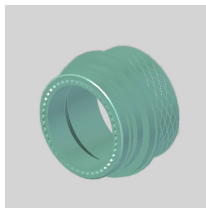
STEP 7: BACKSHELL TYPE



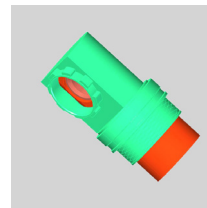
A = Locking Ring Only



B = Straight EMC Backshell with crimp termination types only



C = Right Angle EMC Backshell with crimp termination types only



STEP 8: MODIFIER



W587 = Castellated Nut (for WPTV07 shell style only)

W52 = Olive Drab Zinc Cobalt (with RW finish callout only)

W638 = Panel Gasket supplied (for WPTV00 shell style only)