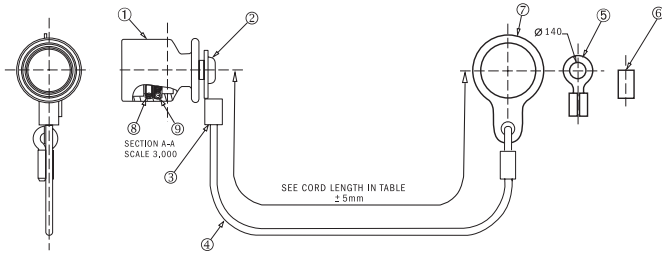


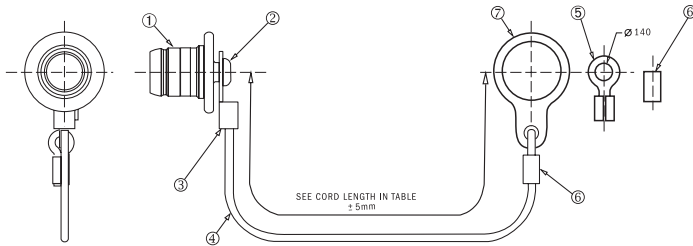
390-5057 - METAL DUSTCAP FOR PLUGS



SHELL SIZE	PART NUMBER	ITEM 1 - CAP	
		ØF	K
06	390-5057-06-XXX-XX	.464 (11.79)	.794 (20.17)
07	390-5057-07-XXX-XX	.545 (13.84)	.794 (20.17)
08	390-5057-08-XXX-XX	.620 (15.75)	.794 (20.17)
09	390-5057-09-XXX-XX	.695 (17.65)	.794 (20.17)
10	390-5057-10-XXX-XX	.770 (19.56)	.794 (20.17)

XXX = Length of cord 060, 130, 180 mm
 XX = 02 = Crimp ferrule
 03 = Eyelet
 05 = Large eyelet for jamnut

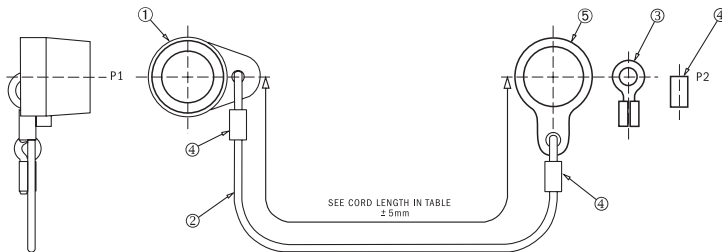
390-5056 - METAL DUSTCAP FOR RECEPTACLES



SHELL SIZE	PART NUMBER	ITEM 1 - CAP	
		ØF	K
06	390-5056-06-XXX-XX	.575 (14.61)	.664 (16.87)
07	390-5056-07-XXX-XX	.575 (14.61)	.664 (16.87)
08	390-5056-08-XXX-XX	.750 (19.05)	.664 (16.87)
09	390-5056-09-XXX-XX	.825 (20.95)	.664 (16.87)
10	390-5056-10-XXX-XX	.900 (22.86)	.664 (16.87)

XXX = Length of cord 060, 130, 180 mm
 XX = 02 = Crimp ferrule
 03 = Eyelet
 05 = Large eyelet for jamnut

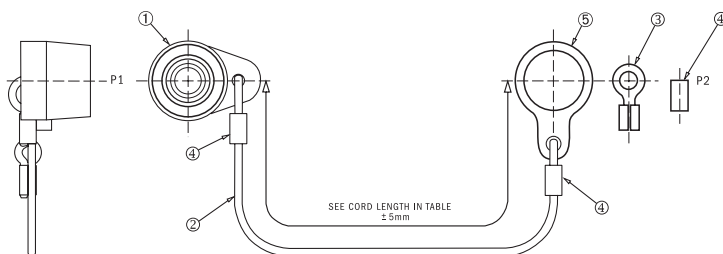
390-5064 - RUBBER DUSTCAP FOR PLUGS



SHELL SIZE	PART NUMBER	ITEM 1 - CAP	
		ØF	K
06	390-5064-06-XXX-XX	.450 (11.43)	.550 (13.97)
07	390-5064-07-XXX-XX	.525 (13.34)	.550 (13.97)
08	390-5064-08-XXX-XX	.595 (15.11)	.550 (13.97)
09	390-5064-09-XXX-XX	.665 (16.89)	.550 (13.97)
10	390-5064-10-XXX-XX	.735 (18.67)	.550 (13.97)

XXX = Length of cord 060, 130, 180 mm
 XX = 02 = Crimp ferrule
 03 = Eyelet
 05 = Large eyelet for jamnut

390-5063 - RUBBER DUSTCAP FOR RECEPTACLES



SHELL SIZE	PART NUMBER	ITEM 1 - CAP	
		ØF	K
06	390-5063-06-XXX-XX	.625 (15.88)	.550 (13.97)
07	390-5063-07-XXX-XX	.725 (18.42)	.550 (13.97)
08	390-5063-08-XXX-XX	.780 (19.81)	.550 (13.97)
09	390-5063-09-XXX-XX	.870 (22.10)	.550 (13.97)
10	390-5063-10-XXX-XX	.940 (23.88)	.550 (13.97)

XXX = Length of cord 060, 130, 180 mm
 XX = 02 = Crimp ferrule
 03 = Eyelet
 05 = Large eyelet for jamnut

All dimensions in inches (millimeters in parenthesis)