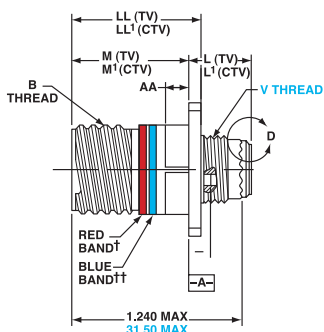


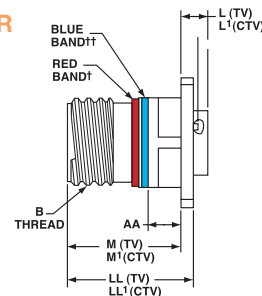
DIMENSIONS

RECEPTACLES

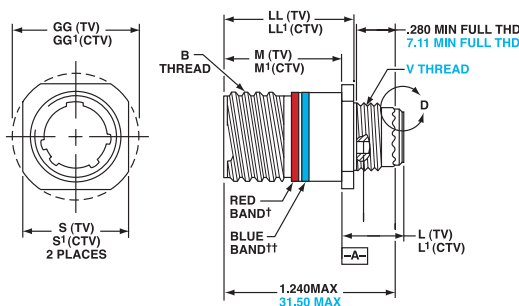
TVP00R/TVPS00R
CTVP00R/CTVPS00R
D38999/20



TVP02R/TVPS02R
CTVP02R/CTVPS02R



SHELL SIZE	MS SHELL CODE	B THREAD CLASS 2A 1.0P-0.3L	M +.000/-0.005 (+.000/-.130) TV	M1 +.000/-0.005 (+.000/-.130) CTV	Z MAX. (TV)	Z1 Max. (CTV)	L MAX. (TV)		L1 MAX. (CTV)		LL +.006/-.000 (+.150/-.000) TV	LL1 ±.005/ (±.130) CTV	AA MAX PANEL THICKNESS
							D38999/20 / TVP02R / TVP01R	TVP02R	D38999/20 / CTVP00R / CTVP01R	CTVP02R			
9	A	0.625	.820 (20.83)	.773 (19.63)	.153 (3.89)	.198 (5.03)	.469 (11.91)	.205 (5.21)	.514 (13.06)	.250 (6.35)	.905 (22.99)	.908 (23.06)	.234 (5.94)
11	B	0.75	.820 (20.83)	.773 (19.63)	.153 (3.89)	.198 (5.03)	.469 (11.91)	.205 (5.21)	.514 (13.06)	.250 (6.35)	.905 (22.99)	.908 (23.06)	.234 (5.94)
13	C	0.875	.820 (20.83)	.773 (19.63)	.153 (3.89)	.198 (5.03)	.469 (11.91)	.205 (5.21)	.514 (13.06)	.250 (6.35)	.905 (22.99)	.908 (23.06)	.234 (5.94)
15	D	1	.820 (20.83)	.773 (19.63)	.153 (3.89)	.198 (5.03)	.469 (11.91)	.205 (5.21)	.514 (13.06)	.250 (6.35)	.905 (22.99)	.908 (23.06)	.234 (5.94)
17	E	1.188	.820 (20.83)	.773 (19.63)	.153 (3.89)	.198 (5.03)	.469 (11.91)	.205 (5.21)	.514 (13.06)	.250 (6.35)	.905 (22.99)	.908 (23.06)	.234 (5.94)
19	F	1.25	.820 (20.83)	.773 (19.63)	.153 (3.89)	.198 (5.03)	.469 (11.91)	.205 (5.21)	.514 (13.06)	.250 (6.35)	.905 (22.99)	.908 (23.06)	.234 (5.94)
21	G	1.375	.790 (20.07)	.741 (18.82)	.183 (4.65)	.228 (5.79)	.500 (12.70)	.235 (5.97)	.545 (13.84)	.280 (7.11)	.905 (22.99)	.904 (22.96)	.204 (5.18)
23	H	1.5	.790 (20.07)	.741 (18.82)	.183 (4.65)	.228 (5.79)	.500 (12.70)	.235 (5.97)	.545 (13.84)	.280 (7.11)	.905 (22.99)	.904 (22.96)	.204 (5.18)
25	J	1.625	.790 (20.07)	.741 (18.82)	.183 (4.65)	.228 (5.79)	.500 (12.70)	.235 (5.97)	.545 (13.84)	.280 (7.11)	.905 (22.99)	.904 (22.96)	.204 (5.18)

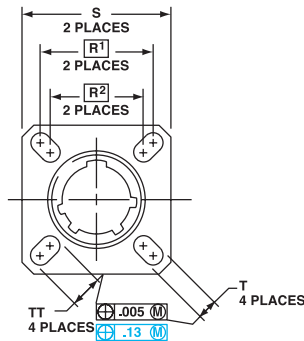


Shell Size	MS Shell Size Code	B Thread Class 2A 0.1P-0.3L-TS (Plated)	M +.000/-0.005 (+.000/-.130) TV	M1 +.000/-0.005 (+.000/-.130) CTV	Z Max. (TV)	Z1 Max. (CTV)	L Max. (TV)	L1 Max. (CTV)	LL +.006/-0.000 (±.150/-0.000) TV	LL1 ±.005 (±.250) CTV	S ±.010 (±.250) TV	S1 ±.010 (±.250) CTV	GG ±.010 (±.250) TV	GG1 ±.010 (±.250) CTV	V Thread Metric
9	A	0.625	.820 (20.83)	.773 (19.63)	.153 (3.89)	.198 (5.03)	.469 (11.91)	.514 (13.06)	.905 (22.99)	.908 (23.06)	.675 (17.15)	.635 (16.13)	.812 (20.62)	.699 (17.75)	M12X1-6g
11	B	0.750	.820 (20.83)	.773 (19.63)	.153 (3.89)	.198 (5.03)	.469 (11.91)	.514 (13.06)	.905 (22.99)	.908 (23.06)	.800 (20.32)	.765 (19.43)	.905 (22.99)	.875 (22.22)	M15X1-6g
13	C	0.875	.820 (20.83)	.773 (19.63)	.153 (3.89)	.198 (5.03)	.469 (11.91)	.514 (13.06)	.905 (22.99)	.908 (23.06)	.925 (23.50)	.885 (22.47)	1.093 (27.76)	1.007 (25.57)	M18X1-6g
15	D	1.000	.820 (20.83)	.773 (19.63)	.153 (3.89)	.198 (5.03)	.469 (11.91)	.514 (13.06)	.905 (22.99)	.908 (23.06)	1.050 (26.67)	1.100 (27.94)	1.219 (30.96)	1.140 (28.95)	M22X1-6g
17	E	1.1875	.820 (20.83)	.773 (19.63)	.153 (3.89)	.198 (5.03)	.469 (11.91)	.514 (13.06)	.905 (22.99)	.908 (23.06)	1.238 (31.45)	1.197 (30.40)	1.375 (34.93)	1.229 (31.21)	M25X1-6g
19	F	1.250	.820 (20.83)	.773 (19.63)	.153 (3.89)	.198 (5.03)	.469 (11.91)	.514 (13.06)	.905 (22.99)	.908 (23.06)	1.300 (33.02)	1.260 (32.00)	1.469 (37.31)	1.380 (35.05)	M28X1-6g
21	G	1.375	.790 (20.07)	.741 (18.92)	.183 (4.65)	.228 (5.79)	.500 (12.70)	.545 (13.84)	.905 (35.18)	.904 (22.96)	1.425 (36.20)	1.385 (35.18)	1.625 (41.28)	1.493 (37.92)	M31X1-6g
23	H	1.500	.790 (20.07)	.741 (18.92)	.183 (4.65)	.228 (5.79)	.500 (12.70)	.545 (13.84)	.905 (22.99)	.904 (22.96)	1.550 (39.37)	1.510 (38.35)	1.750 (44.45)	1.626 (41.30)	M34X1-6g
25	J	1.625	.790 (20.07)	.741 (18.92)	.183 (4.65)	.228 (5.79)	.500 (12.70)	.545 (13.84)	.905 (22.99)	.904 (22.96)	1.675 (42.55)	1.635 (41.53)	1.875 (47.63)	1.777 (45.13)	M37X1-6g

All dimensions in inches (millimeters in parenthesis)

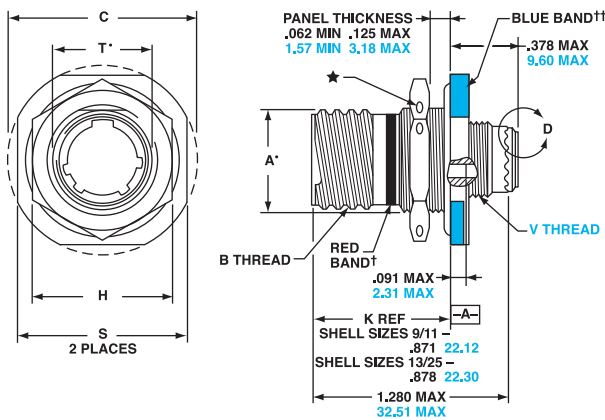
RECEPTACLES

TVP00R/TVPS00R
 CTPV00R/CTVPS00R
 TVP02R/TVPS02R
 CTPV02R/CTVPS02R
 D38999/20 (CONTINUED)



R1	R2	S Max.	T +.008/- .006 (+.200/- .130)	TT +.008/- .006 (+.200/- .130)	V Thread Metric
.719 (18.26)	.594 (15.09)	.948 (24.10)	.128 (3.25)	.216 (5.49)	M12X1-6g
.812 (20.62)	.719 (18.26)	1.043 (26.50)	.128 (3.25)	.194 (4.93)	M15X1-6g
.906 (23.01)	.812 (20.62)	1.137 (28.90)	.128 (3.25)	.194 (4.93)	M18X1-6g
.969 (24.61)	.906 (23.01)	1.232 (31.30)	.128 (3.25)	.173 (4.39)	M22X1-6g
1.062 (26.97)	.969 (24.61)	1.323 (33.70)	.128 (3.25)	.194 (4.93)	M25X1-6g
1.156 (29.36)	1.062 (26.97)	1.449 (36.90)	.128 (3.25)	.194 (4.93)	M28X1-6g
1.250 (31.75)	1.156 (29.36)	1.575 (40.10)	.128 (3.25)	.194 (4.93)	M31X1-6g
1.375 (34.92)	1.250 (31.75)	1.701 (43.30)	.154 (3.91)	.242 (6.15)	M34X1-6g
1.500 (38.10)	1.375 (34.92)	1.823 (46.40)	.154 (3.91)	.242 (6.15)	M37X1-6g

TV07R/TVS07R
 CTV02R/CTVS07R
 D38999/24



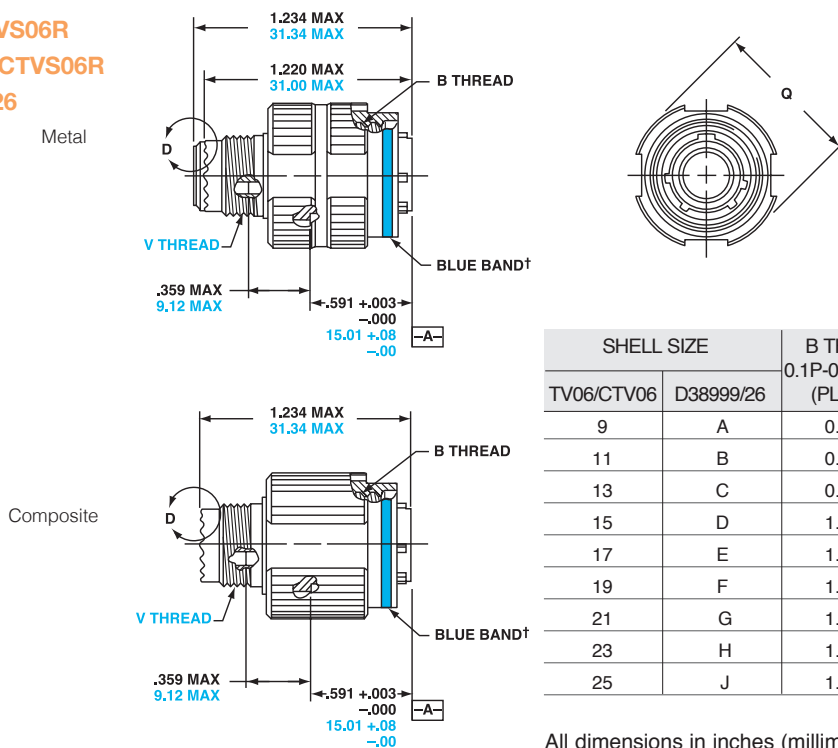
Shell Size		A*	B Thread	C Max.	D1	D2	H Hex	S	T*	V
TV07/CTV07 D38999/24		+ .000/- .010 (+ .000/- .250)	Class 2A 0.1P- 0.3L-TS (Plated)	Flange Wrench	+ .010/- .000 (+ .250/- .000)	+ .010/- .000 (+ .250/- .000)	+ .017/- .016 (+ .430/- .410)	± .010	+ .010/- .000 (+ .250/- .000)	Thread Metric
9	A	0.669 (16.99)	0.6250	1.199 (30.45)	.700 (17.78)	.670 (17.02)	.875 (22.23)	1.062 (26.97)	.697 (17.70)	M12X1-6g
11	B	0.769 (19.53)	0.7500	1.386 (35.20)	.825 (20.96)	.770 (19.59)	1.000 (25.40)	1.250 (31.75)	.822 (20.88)	M15X1-6g
13	C	0.955 (24.26)	0.8750	1.511 (38.38)	1.010 (25.65)	.955 (24.26)	1.188 (30.18)	1.375 (34.93)	1.007 (25.58)	M18X1-6g
15	D	1.084 (27.53)	1.0000	1.636 (41.55)	1.135 (28.83)	1.085 (27.56)	1.312 (33.32)	1.500 (38.10)	1.134 (28.80)	M22X1-6g
17	E	1.208 (30.68)	1.1875	1.761 (44.73)	1.260 (32.01)	1.210 (30.73)	1.438 (36.53)	1.625 (41.28)	1.259 (31.98)	M25X1-6g
19	F	1.333 (33.86)	1.2500	1.949 (49.50)	1.385 (35.18)	1.335 (33.91)	1.562 (39.67)	1.812 (46.02)	1.384 (35.15)	M28X1-6g
21	G	1.459 (37.06)	1.3750	2.073 (52.65)	1.510 (38.35)	1.460 (37.08)	1.688 (42.80)	1.938 (49.23)	1.507 (38.28)	M31X1-6g
23	H	1.575 (40.01)	1.5000	2.199 (55.85)	1.635 (41.53)	1.585 (40.26)	1.812 (46.02)	2.062 (52.37)	1.634 (41.50)	M34X1-6g
25	J	1.709 (43.41)	1.6250	2.323 (59.00)	1.760 (44.70)	1.710 (43.43)	2.000 (50.80)	2.188 (55.58)	1.759 (44.68)	M37X1-6G

All dimensions in inches (millimeters in parenthesis)

DIMENSIONS

PLUGS

TV06R/TVS06R
CTV06R/CTVS06R
D38999/26

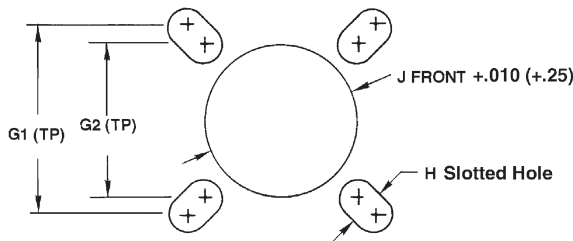


SHELL SIZE		B THREAD	Q	V
TV06/CTV06	D38999/26	0.1P-0.3L-TS-2B (PLATED)	DIAMETER MAX.	THREAD METRIC
9	A	0.6250	.858 (21.80)	M12X1-6g
11	B	0.7500	.984 (25.00)	M15X1-6g
13	C	0.8750	1.157 (29.40)	M18X1-6g
15	D	1.0000	1.280 (32.50)	M22X1-6g
17	E	1.1875	1.406 (35.70)	M25X1-6g
19	F	1.2500	1.516 (38.50)	M28X1-6g
21	G	1.3750	1.642 (41.70)	M31X1-6g
23	H	1.5000	1.768 (44.90)	M34X1-6g
25	J	1.6250	1.890 (48.00)	M37X1-6G

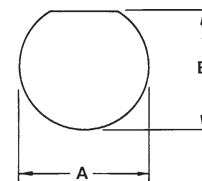
All dimensions in inches (millimeters in parenthesis)

PANEL CUTOUTS

WALL MOUNT RECEPTACLE



JAM NUT RECEPTACLE



Shell Size		D38999/20 & TV/CTV Wall Mount				
D38999	TV/CTV	G1	G2	H Diameter +.005 (+.130) -.000 (.000)	Front Mount J Min.	Back Mount J Min.
A	9	.719 (18.26)	.59 (15.09)	.130 (3.25)	.516 (13.11)	.656 (16.66)
B	11	.81 (20.62)	.71 (18.26)	.130 (3.25)	.625 (15.88)	.796 (20.22)
C	13	.91 (23.01)	.81 (20.62)	.130 (3.25)	.750 (19.05)	.922 (23.42)
D	15	.97 (24.61)	.90 (23.01)	.130 (3.25)	.906 (23.01)	1.047 (26.59)
E	17	1.06 (26.97)	.96 (24.61)	.130 (3.25)	1.016 (25.81)	1.219 (30.96)
F	19	1.16 (29.36)	1.06 (26.97)	.130 (3.25)	1.141 (28.98)	1.297 (32.94)
G	21	1.25 (31.75)	1.15 (29.36)	.130 (3.25)	1.266 (32.16)	1.422 (36.12)
H	23	1.38 (34.93)	1.25 (31.75)	.155 (3.94)	1.375 (34.93)	1.547 (39.29)
J	25	1.50 (38.10)	1.37 (34.93)	.155 (3.94)	1.484 (37.69)	1.672 (42.47)

D38999/24 & TV/CTV Jam Nut	
A	B
+0.010 (+.025) -.000 (.000)	+0.000 (000) -.010 (-.025)
.693 (17.60)	.657 (16.70)
.825 (20.96)	.770 (19.59)
1.010 (25.65)	.955 (24.26)
1.135 (28.83)	1.085 (27.56)
1.260 (32.01)	1.210 (30.73)
1.385 (35.18)	1.335 (33.91)
1.510 (38.35)	1.460 (37.08)
1.635 (41.53)	1.585 (40.29)
1.760 (44.70)	1.710 (43.43)

All dimensions in inches (millimeters in parenthesis)

PANEL THICKNESS

WALL MOUNT RECEPTACLE

D38999/20 Rear Mount .125" (3.18) Max.

JAM NUT RECEPTACLE

D38999/24 Jam Nut
 .125" (3.18) Max./0.062" (1.57) Min.