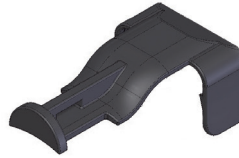


## STRAIGHT BACKSHELLS FOR CABLE TIE

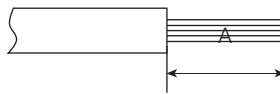


SHELL SIZE	STRAIGHT BACKSHELL
Size 3	D369-STB-3
Size 6	D369-STB-6
Size 9	D369-STB-9

## ASSEMBLY

## WIRE STRIPPING

Strip insulation from end of wire to be crimped. (See table for proper stripping dimensions.) Do not cut or damage wire strands.



WIRE SIZE	A
22	.125 (3.18)

All dimensions in inches  
(millimeters in parenthesis)

## CONTACT CRIMPING

correct crimp



incorrect crimp

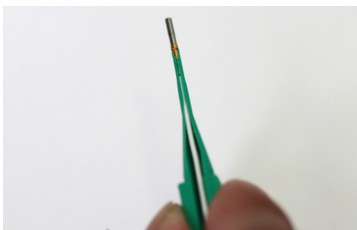


**STEP 1:** Strip wires. See above for correct strip length for contact. Insert wire into rear of contact. Wire insulation must push against rear of contact. Wire must be visible through inspection hole.

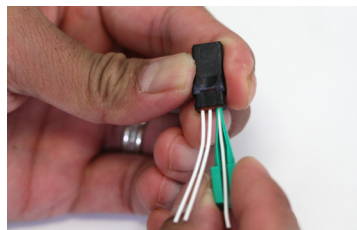
**STEP 2:** M22520 series crimp tool and locator is recommended. → See page 112 for choice of turret head and selection setting according to correct size, part number and wire gauge size.

**STEP 3:** Insert contact and wire into tool jaws. To crimp, squeeze handles together fully until ratchet releases and allows handles to expand; otherwise, contact cannot be extracted from tool jaws. Maintain slight insertion pressure on wire while crimping contact to wire.

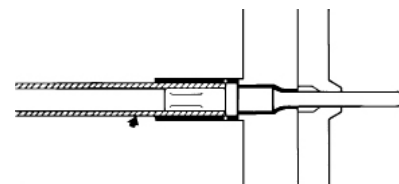
## CONTACT INSERTION



**STEP 1:** Using proper plastic insertion tool for corresponding contact, position wire in tip of the tool so that the tool tip presses against the contact shoulder. Use lubrication, Isopropyl Alcohol to aid with contact insertion/extraction.



**STEP 2:** Press tool against contact shoulder and, with firm and even pressure, insert wired contact and tool tip into center contact cavity.



**STEP 3:** When contact bottoms, a slight "click" can be heard as tines of retaining clip snap into place behind contact shoulder. Do not rotate insertion/extraction tool in the connector. It can cause damage to the retention tines.