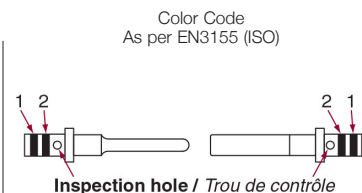
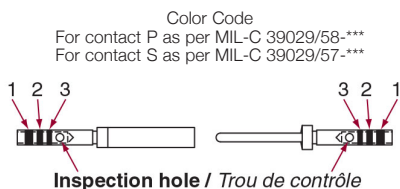


CONTACTS



CONTACTS								CABLES	
PART NUMBER DEUTSCH	TYPE	SIZE	COLOR CODES AS PER MIL			COLOR CODES AS PER EN3155		Ø OVER INSULATION IN/MM (GAUGE AWG)	WIRE SECTION IN/ MM²
			1	2	3	1	2		
724-0001-22	P	22/22	Orange	Blue	Black	-	-	0.71 to 1.37 (22 - 26)	0.095 to 0.40
724-0003-22	S		Orange	Green	Yellow	-	-		
182-0860-22	P	22/20	-	-	-	Red	Green	0.71 to 1.37 (22 - 26)	0.095 to 0.40
182-0862-22	S		-	-	-				
724-0001-20	P	20/20	Orange	Blue	Orange	-	-	0.85 to 2.11 (20 - 24)	0.25 to 0.60
724-0003-20	S		Orange	Green	Violet	-	-		
724-1063-20	P	20/18	-	-	-	Red	Brown	(18 - 24)	0.25 to 1.00
724-1064-20	S		-	-	-				
724-0001-16	P	16/16	Orange	Blue	Yellow	-	-	1.20 to 2.77 (16 - 20)	0.60 to 1.20
724-0003-16	S		Orange	Green	Gray	-	-		
724-1063-16	P	16/14	-	-	-	Blue	White	(14 - 20)	0.60 to 2.00
724-1064-16	S		-	-	-				
724-0001-12	P	12/12	Orange	Blue	Green	-	-	1.90 to 3.61 (12 - 14)	2.00 to 3.00
724-0003-12	S		Orange	Green	White	-	-		
724-1063-12	P	12/10	-	-	-	Yellow	White	1.90 to 2.90 (14 - 10)	2.00 to 5.00
724-1064-12	S		-	-	-				
724-0001-08	P	Power 8	-	-	-	-	-	3.80 to 5.15 (8)	5.30 to 8.98
724-0003-08	S		-	-	-	-	-		
182-0001-08	P	Power 8	-	-	-	-	-	3.80 to 5.15 (8)	5.30 to 8.98
182-0003-08	S		-	-	-	-	-		
724-0004-16	P	Micro-Coax 16	Yellow	Red	Yellow	-	-	KX 22	0.057 to 0.158
724-0005-16	S		Yellow	Orange	Red	-	-		
182-0125-08	P	8	-	-	-	-	-	ALPEN A 26 DT	-
182-0126-08	S		-	-	-	-	-		
182-0048-08	P	8	-	-	-	-	-	Interface SMA	-
182-0044-08	S		-	-	-	-	-		
724-1272-22	S	Shunt 22	-	-	-	-	-	0.71 to 1.37 (22 - 26)	0.095 to 0.40

DATABUS CONTACTS

DATABUS CONTACTS (TWISTED PAIR) AS PER MIL-C 38999 SERIES I, III AND IV STANDARD						
CONTACTS				CABLES		
PART NUMBER	TYPE	SIZE	COLOR CODE	TYPES	CONDUCT. MAX. SECTION	BRAID Ø MAX.
182-0034-03	P	8	Brown-Red	Braid Simple	2 x 0.34 mm²	3.48
182-0035-03	S					
182-0034-04	P	8	Red-Red	High Immunity Double Braid	2 x 0.34 mm²	3.91
182-0035-04	S					

Part numbers in red - Standard contacts delivered with modules

Note: Contacts for aluminium cable, contact us.

CONTACTS AND TOOLING



CONTACTS	TOOLING				
	CRIMPING TOOL P/N DEUTSCH	CRIMPING TOOL P/N MIL	LOCATOR P/N DEUTSCH	LOCATOR P/N MIL	INSERTION AND EXTRACTION TOOL
724-0001-22	057-0463-12	M22520/2-01	057-0467-32	M22520/2-09	M81969/14-01
724-0003-22			057-0515-32	M22520/2-06	
182-0860-22	057-0463-12	M22520/2-01	057-0467-32	M22520/2-09	M81969/14-01
182-0862-22					
724-0001-20	057-0461-11	M22520/1-01	057-0466-21	M22520/1-04	M15570-20
724-0003-20					
724-1063-20	057-0461-11	M22520/1-01	056-0466-21	M22520/1-04	-
724-1064-20					
724-0001-16	057-0461-11	M22520/1-01	057-0466-21	M22520/1-04	M15570-16
724-0003-16					
724-1063-16	057-0461-11	M22520/1-01	056-0466-21	M22520/1-04	-
724-1064-16					
724-0001-12	057-0461-11	M22520/1-01	057-0466-21	M22520/1-04	M15570-12
724-0003-12					
724-1063-12	057-0461-11	-	056-0466-21	M22520/1-04	-
724-1064-12					
724-0001-08	057-0064-05 A	-	057-0065-05 A	-	114-008 or M81969/14-06
724-0003-08					
182-0001-08	057-0064-05 A	-	057-0065-05 A	-	114-008 or M81969/14-06
182-0003-08					
724-0004-16	057-0463-12*	-	057-0539-32*	-	M15570-16
724-0005-16	057-0509-14**		057-0511-34**		
182-0125-08	-	-	-	-	-
182-0126-08	-	-	-	-	-
182-0048-08	-	-	-	-	-
182-0044-08	-	-	-	-	-
724-1272-22	057-0463-12	M22520/2-01	057-0467-32	M22520/2-09	M81969/14-01

Part numbers in red - Standard contacts delivered with modules

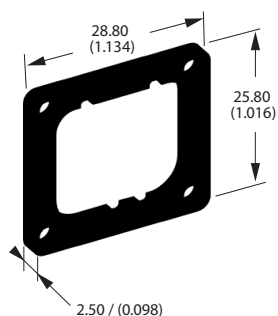
*For central contact **For exterior contact

DATABUS CONTACTS

DATABUS CONTACTS (TWISTED PAIR) AS PER MIL-C 38999 SERIES I, III AND IV STANDARD			
SLEEVE TYPE	CRIMPING TOOL CENTRAL CONDUCTOR	CRIMPING TOOL FERRULE	INSERTION AND EXTRACTION TOOL
Thermoplastic and silicone	TDB-CY-08	TDB-CT-HEX Mark C	114-008 or M81969/14-06
Thermoplastic and silicone	TDB-CT-08	TDB-CT-HEX Mark D	114-008 or M81969/14-06

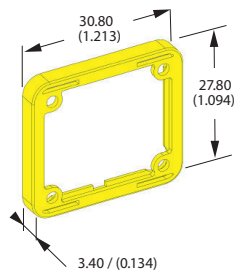
OPTIONAL PARTS FOR RECEPTACLE

KEYING PLATE



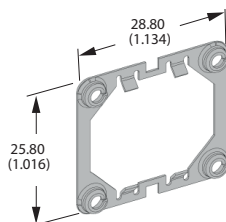
- | | |
|-----------------|-------------|
| N - 787-0015-00 | EN4165-25CN |
| A - 787-0015-01 | EN4165-25CA |
| B - 787-0015-02 | EN4165-25CB |
| C - 787-0015-03 | EN4165-25CC |
| D - 787-0015-04 | EN4165-25CD |
| E - 787-0015-05 | EN4165-25CE |
| F - 787-0015-06 | EN4165-25CF |
| G - 787-0015-07 | EN4165-25CG |

SEALING GASKET



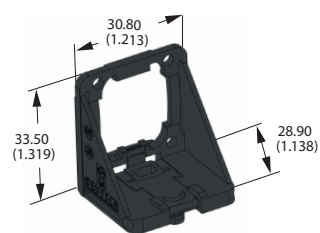
787-0011-00
EN4165-25E

NUT PLATE



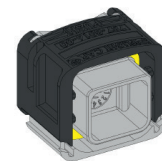
787-0016-00
EN4165-25D

PANEL MOUNTING BRACKET



787-8014-00

PROTECTIVE CAPS



PROTECTION LEVEL	PLUG CAP	RECEPTACLE CAP	RECEPTACLE AND EXTENDER CAP	PLUG FLIGHT CAP	RECEPTACLE AND EXTENDER FLIGHT CAP
	104-0236-00	104-0235-00	WITH LANYARD 787-8011-00 WITHOUT LANYARD 787-8009-00	787-8010-00	WITH LANYARD 787-8017-00; EN4165M3C WITHOUT LANYARD 787-8016-00
Shipping	x	x	-	-	-
Dust	x	x	x	x	x
EMI	-	-	x	x	x
Low Pressure Sealing	-	-	-	x	x



Lanyard
787-8013-00

TE DEUTSCH Part Numbers (DMC-M / 787)