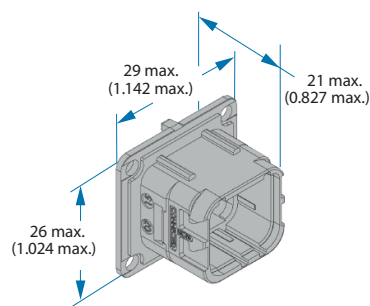
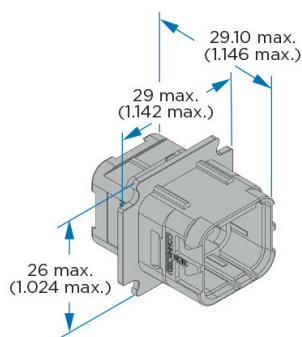


RECEPTACLES & PLUG

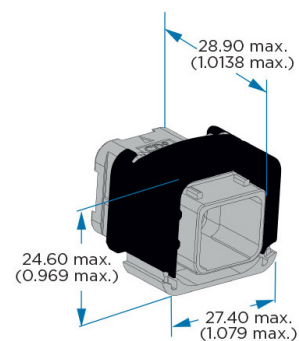
RECEPTACLE



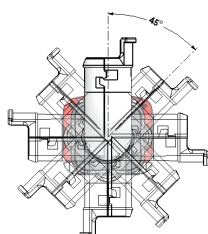
EXTENDER RECEPTACLE



PLUG



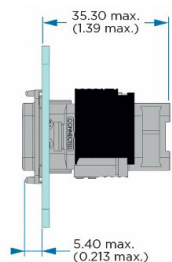
BACKSHELL / CHIMNEY INDEXATION



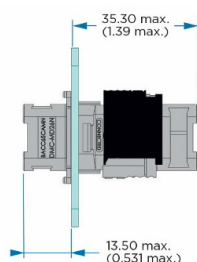
All backshells can be indexed in eight positions on the rear of plug and extender receptacle shell. This gives maximum flexibility during design and cable installation and reduces the number of variants and components.

MOUNTING PANEL DETAILS

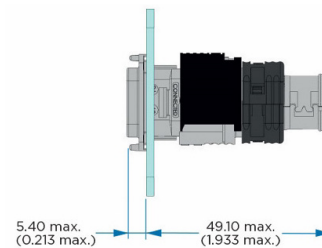
BOX MOUNTING RECEPTACLE



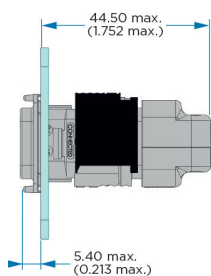
EXTENDER RECEPTACLE



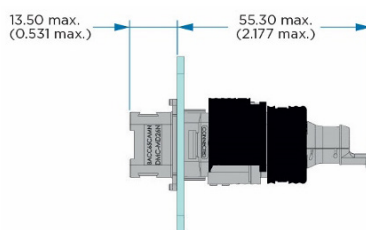
STRAIGHT CHIMNEY



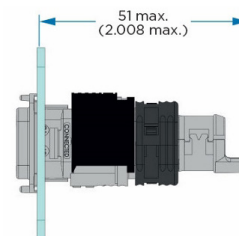
STRAIGHT CLAMPSHELL



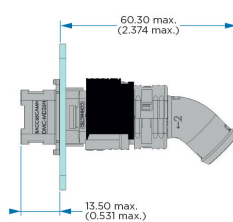
STRAIGHT CHIMNEY TIE WRAP



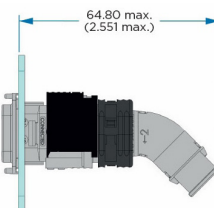
UNIVERSAL UNSHIELDED ACCESSORY



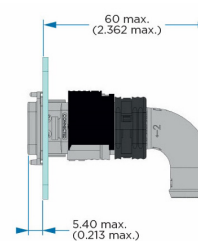
45° INDEXABLE CHIMNEY



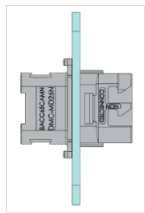
45° INDEXABLE CHIMNEY TIE WRAP



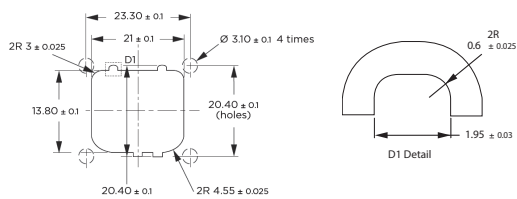
90° INDEXABLE CHIMNEY



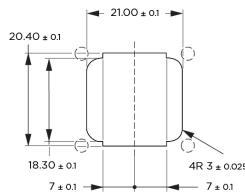
PANEL CUTOUT



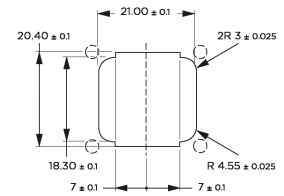
GENERIC DIMENSIONS



FREE

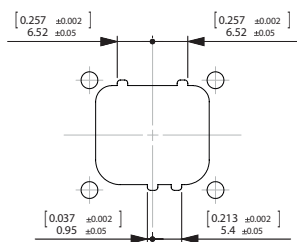


ORIENTATION

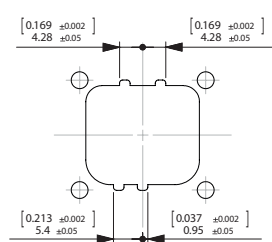


Note: Dimensions are in millimeters. Each hole Ø 3.1 mm must receive a screw (screw type 4-40) Recommended panel thickness: 0.8 mm min. - 2 mm max.

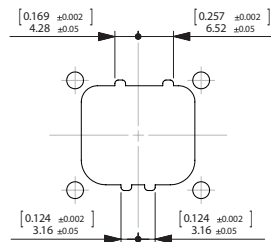
PANEL CODING KEYING



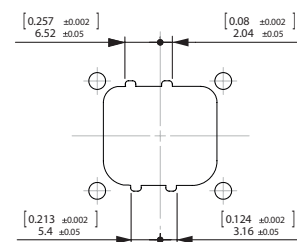
CODING N



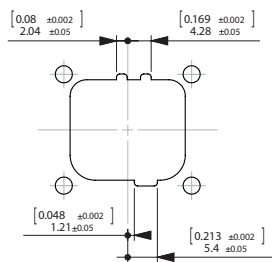
CODING A



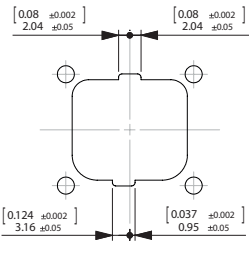
CODING B



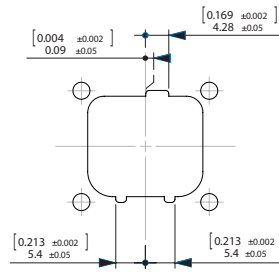
CODING C



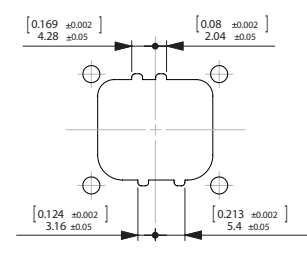
CODING D



CODING E

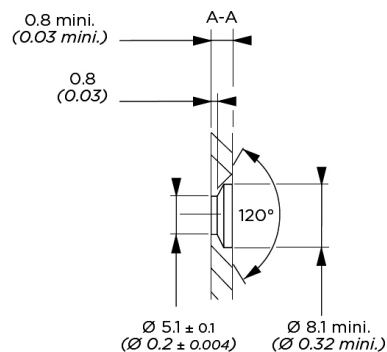
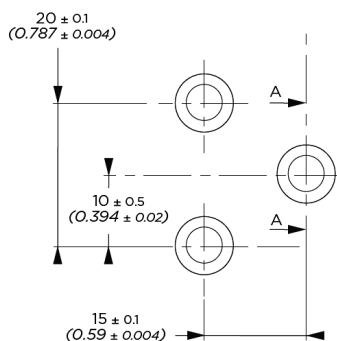


CODING F



CODING G

PANEL MOUNTING BRACKET CUTOUT



Overall dimensions and characteristics are given for indication guidance only. TE DEUTSCH reserves the right to modify them for production improvement reasons.