



BKA ARINC 600 Rack & Panel Connector with Stamped PCB Contacts

High Performance, Cost-Competitive Solution

For Accessory Manufacturers, designers & engineers who seek high performance, cost-competitive electrical connectors, Cannon is one of the first to offer its BKA ARINC 600 Receptacles with removable and serviceable Size 22 Stamped PCB Contacts. Ideally suited for both Commercial Aerospace & Industrial applications, this high performance interconnect features stamped contacts versus traditional machined contacts, making it more lightweight with similar performance.

Remove, Repair & Re-Use

Designed in compliance with ARINC 600 Standards and also available for use on the Cannon DPX (ARINC 404) F106 Insert, Cannon's BKA ARINC 600 Receptacle features Stamped PCB Contacts that can be removed, repaired and re-used, saving a great deal of time and resources. Its weight-saving design is also fully intermateable with existing ARINC 600 Rack & Panel plugs.



The CANNON Difference

- Cost competitive
- Designed per ARINC 600 Standards
- A commitment to delivering the best solution for standard and custom design requirements

KEY Features

- Weight-saving design
- Front release / front removable stamped PCB contacts
- Intermateable with ARINC 600 Rack & Panel plugs
- Reliability & electrical performance similar to machined versions
- 500 Mating Cycles

Performance Characteristic	Test Method
Contact Resistance	Paragraph 19.4.9 of ARINC-600, Test Current 5A, 40mV drop allowed
Durability	Paragraph 19.4.17 of ARINC-600
Temperature Cycle	Paragraph 19.4.11 of ARINC-600, -65 to 125C, 5 cycles
Mechanical Shock	Paragraph 19.4.17 of ARINC-600
Contact Resistance	Paragraph 19.4.9 of ARINC-600, Test Current 5A, 55mV drop allowed

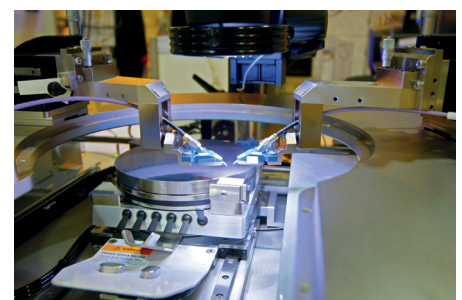
Markets & Applications



Commercial Aviation



In-Flight Entertainment/Connectivity



Industrial

BAK ARINC 600 Connector with Stamped PCB Contacts



How to Order | Part Number Configurator

BAK F 2 - 400 - 4 00 01 - STB

Class _____

F - Receptacle only - Non-environmental (front release, solder and wrap post #22 contact, all others are rear release)

X - Receptacle only - All contacts are front release, for PCB Applications only

Shell Size _____

1 - Max. contact capacity - 125 (ARINC 600 Original Mating Forces: 27 lbs)

2 - Max. contact capacity - 400 (ARINC 600 Original Mating Forces: 60 lbs)

3 - Max. contact capacity - 800 (ARINC 600 Original Mating Forces: 105 lbs)

Connector Layout Description _____

Available Layouts accepting size 22 PCB Stamped Contacts (See Table Below)

Shell Size _____

4 - Receptacle (Box side)

Connector Mounting Modifier _____

Please refer to ITT Cannon Rack and Panel Catalog for Connector Mounting Modifiers

Polarizing Position _____

Please refer to ITT Cannon Rack and Panel Catalog for Polarizing Positions

Modifier (Contact, Finish, Material) _____

BKAF Receptacle side only - Signal contacts (size 22) are front release, front removable with solder post termination. Power contacts are rear release, rear removable with crimp termination.

STE* - Stamped PCB contacts installed .150 (3.81). (Coax, Triax, and Quadrax does not have contacts installed)

STF - Stamped PCB contacts installed .250 (6.35). (Coax, Triax, and Quadrax does not have contacts installed)

STG - Stamped PCB contacts installed .375 (9.53). (Coax, Triax, and Quadrax does not have contacts installed)

STH* - Stamped PCB contacts installed .500 (12.7). (Coax, Triax, and Quadrax does not have contacts installed)

BKAX Receptacle side only- Signal contacts (size 22) are front release, front removable with solder post termination. Power contacts are front release, front removable with solder post termination.

STS* - Stamped PCB contacts installed .150 (3.81) including Coax, Triax, and Quadrax. All contacts to be PCB.

STT - Stamped PCB contacts installed .250 (6.35) including Coax, Triax, and Quadrax. All contacts to be PCB.

STU - Stamped PCB contacts installed .375 (9.53) including Coax, Triax, and Quadrax. All contacts to be PCB.

STV* - Stamped PCB contacts installed .500 (12.7) including Coax, Triax, and Quadrax. All contacts to be PCB.

STW* - Stamped PCB contacts installed .150 (3.81) including Quadrax. (Coax and Triax does not have contacts installed)

STX - Stamped PCB contacts installed .250 (6.35) including Quadrax. (Coax and Triax does not have contacts installed)

STY - Stamped PCB contacts installed .375 (9.53) including Quadrax. (Coax and Triax does not have contacts installed)

STZ* - Stamped PCB contacts installed .500 (12.7) including Quadrax. (Coax and Triax does not have contacts installed)

NOTE: Coaxial contacts to be ordered separately. All Fiber Optic layouts will not have Fiber Optic contacts installed * STE, STH, STS, STV, STW, STZ (Tooling will need to be assessed for these versions)

BAK Insert Arrangements

Shell Size	Shell Part Numbers	# of Size 22 Contacts	Additional Contacts	Cavity
1	30T2 / 30Q2	22 #22	2 # 8 Twinax/ Coax/ Quadrax*	A or B
1	60	60 #22	-	A or B
1	40	22 #22	-	C
2/3	71W1 / 71W1A / 71W1B	70 #22	1 #1 Coax	A, B, D, E
2/3	110	110 #22	5 #12, 5 #20	A, B, D, E
2/3	150	150 #22	-	A, B, D, E
2/3	120T2 / 120Q2	118 #22	2 #8 Twinax/ Coax/ Quadrax*	A, B, D, E
2/3	121	110 #22	5 #16, 6 #20	A, B, D, E
2/3	59	50 #22	5 #16, 4 #12	C or F
2/3	64Q2	60 #22	2 #16, 2 #8 Quadrax	C or F
2/3	70Q2	68 #22	2 #8 Quadrax	C or F
2/3	84	80 #22	4 #20	C or F
2/3	85	80 #22	4 #20, 1 # 16	C or F
2/3	100	100 #22	-	C or F

DPX (ARINC 404) can also utilize the Size 22 Stamped Contact on the F106 insert

*#8 Ground to Shell

Why ITT

ITT is a focused, multi-industrial company that designs and manufactures highly engineered critical components and customized technology solutions.

ITT Cannon is a leading global manufacturer of connector products serving international customers in the aerospace and defense, industrial and medical end markets. We design and engineer a variety of interconnect solutions that make it possible to transfer data, signal and power in an increasingly connected world.

Connect with your ITT Cannon representative today or visit www.ittcannon.com

CHINA—Shenzhen City
+86.755.2726.7888

GERMANY—Weinstadt
+49.7151.699.0

INDIA—Bangalore
+91 22 67843000

JAPAN—Kanagawa
+81.462.57.2010

SINGAPORE
+65 66974205

USA—Irvine, CA
+1.800.854.3028

FRANCE
+33.1.60.04.93.93

HONG KONG
+852.2732.2720

ITALY—Lainate
+39.02938721

MEXICO—Nogales
+52.631.311005

UK—Basingstoke
+44.1256.347400

The "ITT Engineered Blocks" symbol, "Engineered for life," "ITT" and "Cannon" are registered trademarks of ITT Inc. Specification and other data are based on information available at the time of printing and are subject to change without notice.

© 2018 ITT INC
ITT Cannon BAK ARINC 600 with Stamped Contacts Sell Sheet | 06/2018

