

CREATE PART NUMBER

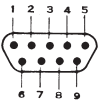
1	2	3	4	5	6
MDM	-15	P	S	K	-A174
SHELL STYLE	LAYOUT	CONTACT	TERMINATIONS	HARDWARE	MOD CODE

STEP 1: CHOOSE INSERT MATERIAL TYPE

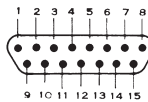
MDM OR RMDM (RoHS - A174 Plating)

Liquid Crystal Polymer*

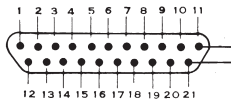
STEP 2: CHOOSE LAYOUT



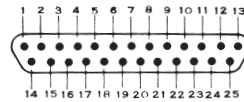
9



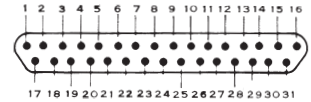
15



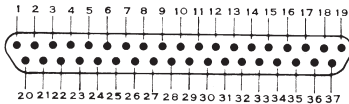
21



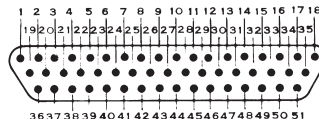
25



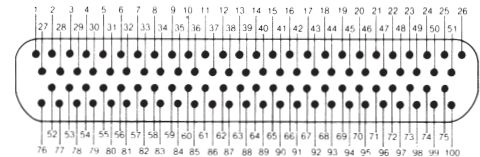
31



37



51



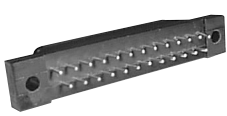
100

STEP 3: CHOOSE CONTACT TYPE

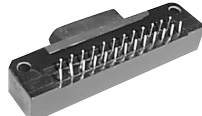
P = Pin (In plug) S = Socket (In receptacle)

STEP 4: CHOOSE TERMINATIONS

PCB TERMINATIONS



BS
Straight Printed
Circuit Board



BR
Right Angle
Printed Circuit
Board



CBR
Narrow Profile
Right Angle Printed
Circuit Board

SOLDER TERMINATIONS



S
Solder Cup 26
AWG Wire Max.

WIRE TERMINATIONS **
SOLID UNINSULATED 25
AWG GOLD PLATED WIRE

CODE	LENGTH INCHES (MM)
L61	.125 (3.18)
L56	.150 (3.81)
L57	.190 (4.83)
L39	.250 (6.35)
L58	.375 (9.52)
L1	.500 (12.70)
L14	.750 (19.05)
L2	1.000 (25.40)
L7	1.500 (38.11)
L6	2.000 (50.80)
L16	2.500 (63.50)
L10	3.000 (76.20)

16878/4
STRANDED WIRE
TERMINATIONS **

YELLOW	COLOR CODED	LENGTH INCHES (MM)
H020	H027	3 (76.2)
H019	H016	6 (152.4)
H026	H034	8 (203.2)
H029	H025	10 (254.0)
H028	H002	12 (304.8)
H001	H003	18 (457.2)
H038	H023	20 (508.0)
H009	H004	24 (609.6)
H010	H005	30 (762.0)
H011	H006	36 (914.4)
H013	H048	48 (1219.2)
H017	H046	72 (1828.8)
H042	H041	120 (3048.0)

* Note Previous Material was Diallyl Phthalate or Polyester.

** For wire lengths and types other than listed, please call.

Dimensions are shown in Inches (mm) unless otherwise indicated.

STEP 5: CHOOSE HARDWARE

PCB HARDWARE

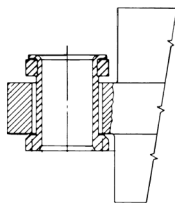


T = Threaded;
(Right angle PCB Only)
Sizes 9-51 = 2-56 thread
Size 100 = 4-40 thread

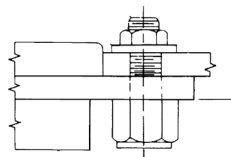
A = Large Through Hole;
Sizes 9-51 = .125
(3.18) diameter
Size 100 = .120
(3.05) diameter

B = Standard Through Hole;
9-51 contacts = .091 (2.31)
100 contacts = .120 (3.05)

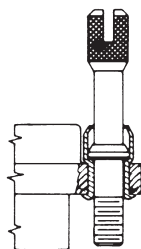
B1 = Through Hole for size 100;
.1475 (3.75) per MIL-C-83513



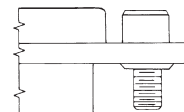
F = Float Mount



P = Jackpost



K = Jackscrew



L = Low Profile Jackscrew
(hex head)

M = Military;
➔ See page 273

STEP 6: CHOOSE MOD CODE

OMIT FOR STANDARD

(Yellow Chromate over Cadmium)



A174* = Electroless nickel (RoHS) not needed with RMDM prefix
A172 = Gold over nickel
A141 = Iridate/alodine
A30 = Black anodized

F222 = Special high-temperature version, -55°C to +200°C
(-67° F to +392°F), default plating is Yellow Chromate over Cadmium

A174-F222 = Special high-temperature version 55°C to +200°C
(-67° F to +392°F) Electroless Nickel

*PCB versions are not RoHS, PC tails are tin-lead plated.

HOW TO ORDER

HOW TO SELECT CONNECTOR PART

EXAMPLE:

M83513/

Same Number
for Plug or
Receptacles

25-A01

Leads: Example
.109 Straight
Printed Circuit
Tails

*

C = Cadmium
**N = Electroless
Nickel**

N = No Jackpost
**P = Jackpost
Installed**

PLUGS



Example: M83513/01-

M83513/	PRE-WIRED LEADS											
NUMBER OF CIRCUITS	STANDARD 26 AWG STRANDED TFE M22759/11						HIGH PERFORMANCE AEROSPACE 26 AWG STRANDED ETFE M22759/33 (ELECTROLESS NICKEL PLATED ONLY)					
	WHITE			COLOR CODED			WHITE			COLOR CODED		
	18"	36"	72"	18"	36"	72"	18"	36"	72"	18"	36"	72"
9	03-A01*	03-A02*	03-A13*	03-A03*	03-A04*	03-A14*	03-A09N	03-A10N	03-A15N	03-A11N	03-A12N	03-A16N
15	03-B01*	03-B02*	03-B13*	03-B03*	03-B04*	03-B14*	03-B09N	03-B10N	03-B15N	03-B11N	03-B12N	03-B16N
21	03-C01*	03-C02*	03-C13*	03-C03*	03-C04*	03-C14*	03-C09N	03-C10N	03-C15N	03-C11N	03-C12N	03-C16N
25	03-D01*	03-D02*	03-D13*	03-D03*	03-D04*	03-D14*	03-D09N	03-D10N	03-D15N	03-D11N	03-D12N	03-D16N
31	03-E01*	03-E02*	03-E13*	03-E03*	03-E04*	03-E14*	03-E09N	03-E10N	03-E15N	03-E11N	03-E12N	03-E16N
37	03-F01*	03-F02*	03-F13*	03-F03*	03-F04*	03-F14*	03-F09N	03-F10N	03-F15N	03-F11N	03-F12N	03-F16N
51	03-G01*	03-G02*	03-G13*	03-G03*	03-G04*	03-G14*	03-G09N	03-G10N	03-G15N	03-G11N	03-G12N	03-G16N
100	03-H01*	03-H02*	03-H13*	03-H03*	03-H04*	03-H14*	03-H09N	03-H10N	03-H15N	03-H11N	03-H12N	03-H16N

Bold part numbers are in stock; choose for fast delivery.

RECEPTACLES



Example: M83513/02-

M83513/	PRE-WIRED LEADS											
NUMBER OF CIRCUITS	STANDARD 26 AWG STRANDED TFE M22759/11						HIGH PERFORMANCE AEROSPACE 26 AWG STRANDED ETFE M22759/33 (ELECTROLESS NICKEL PLATED ONLY)					
	WHITE			COLOR CODED			WHITE			COLOR CODED		
	18"	36"	72"	18"	36"	72"	18"	36"	72"	18"	36"	72"
9	04-A01*	04-A02*	04-A13*	04-A03*	04-A04*	04-A14*	04-A09N	04-A10N	04-A15N	04-A11N	04-A12N	04-A16N
15	04-B01*	04-B02*	04-B13*	04-B03*	04-B04*	04-B14*	04-B09N	04-B10N	04-B15N	04-B11N	04-B12N	04-B16N
21	04-C01*	04-C02*	04-C13*	04-C03*	04-C04*	04-C14*	04-C09N	04-C10N	04-C15N	04-C11N	04-C12N	04-C16N
25	04-D01*	04-D02*	04-D13*	04-D03*	04-D04*	04-D14*	04-D09N	04-D10N	04-D15N	04-D11N	04-D12N	04-D16N
31	04-E01*	04-E02*	04-E13*	04-E03*	04-E04*	04-E14*	04-E09N	04-E10N	04-E15N	04-E11N	04-E12N	04-E16N
37	04-F01*	04-F02*	04-F13*	04-F03*	04-F04*	04-F14*	04-F09N	04-F10N	04-F15N	04-F11N	04-F12N	04-F16N
51	04-G01*	04-G02*	04-G13*	04-G03*	04-G04*	04-G14*	04-G09N	04-G10N	04-G15N	04-G11N	04-G12N	04-G16N
100	04-H01*	04-H02*	04-H13*	04-H03*	04-H04*	04-H14*	04-H09N	04-H10N	04-H15N	04-H11N	04-H12N	04-H16N

Bold part numbers are in stock; choose for fast delivery.

HOW TO SELECT HARDWARE PART #

HARDWARE

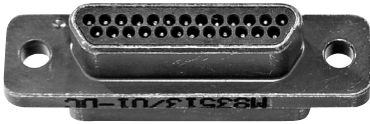
EXAMPLE:

M83513/05- 05

Low Profile Slotted
Jackscrew with a
Connector Size of 9-51

M83513/05-	SLOTTED JACKSCREW		ALLEN HEAD JACKSCREW		JACKPOST
	CONNECTOR SIZE	LOW PROFILE	HIGH PROFILE	LOW PROFILE	
9-51	05	06	02	03	07
100	15	16	12	13	17

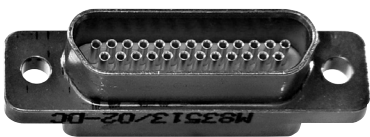
PLUGS



Example: M83513/01-

M83513/ NUMBER OF CIRCUITS	PRE-WIRED LEADS				SOLDER	STRAIGHT PRINTED CIRCUIT TAILS			RIGHT ANGLE PRINTED CIRCUIT TAILS					
	25 AWG SOLID 1/2" UNINSULATED"		25 AWG SOLID 1" UNINSULATED"			LENGTH IN INCHES			CONDENSED FOOTPRINT LENGTH IN INCHES			WIDE FOOTPRINT LENGTH IN INCHES		
	TINNED LEADS	GOLD LEADS	TINNED LEADS	GOLD LEADS		0.109 (2.77)	0.140 (3.56)	0.172 (4.37)	0.109 (2.77)	0.140 (3.56)	0.172 (4.37)	0.109 (2.77)	0.140 (3.56)	0.172 (4.37)
9	03-A07*	03-A05*	03-A08*	03-A06*	01-A*	22-A01*†	22-A02*†	22-A03*†	10-A01*†	10-A02*†	10-A03*†	16-A01*†	16-A02*†	16-A03*†
15	03-B07*	03-B05*	03-B08*	03-B06*	01-B*	22-B01*†	22-B02*†	22-B03*†	10-B01*†	10-B02*†	10-B03*†	16-B01*†	16-B02*†	16-B03*†
21	03-C07*	03-C05*	03-C08*	03-C06*	01-C*	22-C01*†	22-C02*†	22-C03*†	10-C01*†	10-C02*†	10-C03*†	16-C01*†	16-C02*†	16-C03*†
25	03-D07*	03-D05*	03-D08*	03-D06*	01-D*	22-D01*†	22-D02*†	22-D03*†	10-D01*†	10-D02*†	10-D03*†	16-D01*†	16-D02*†	16-D03*†
31	03-E07*	03-E05*	03-E08*	03-E06*	01-E*	22-E01*†	22-E02*†	22-E03*†	10-E01*†	10-E02*†	10-E03*†	16-E01*†	16-E02*†	16-E03*†
37	03-F07*	03-F05*	03-F08*	03-F06*	01-F*	22-F01*†	22-F02*†	22-F03*†	10-F01*†	10-F02*†	10-F03*†	16-F01*†	16-F02*†	16-F03*†
51	03-G07*	03-G05*	03-G08*	03-G06*	01-G*	23-G01*†	23-G02*†	23-G03*†	11-G01*†	11-G02*†	11-G03*†	17-G01*†	17-G02*†	17-G03*†
100	03-H07*	03-H05*	03-H08*	03-H06*	01-H*	24-H01*†	24-H02*†	24-H03*†	12-H01*†	12-H02*†	12-H03*†	18-H01*†	18-H02*†	18-H03*†

RECEPTACLES



Example: M83513/02-

M83513/ NUMBER OF CIRCUITS	PRE-WIRED LEADS				SOLDER	STRAIGHT PRINTED CIRCUIT TAILS			RIGHT ANGLE PRINTED CIRCUIT TAILS					
	25- AWG SOLID 1/2" UNINSULATED"		25- AWG SOLID 1" UNINSULATED"			LENGTH IN INCHES			CONDENSED FOOTPRINT LENGTH IN INCHES			WIDE FOOTPRINT LENGTH IN INCHES		
	TINNED LEADS	GOLD LEADS	TINNED LEADS	GOLD LEADS		0.109 (2.77)	0.14-0 (3.56)	0.172 (4.37)	0.109 (2.77)	0.14-0 (3.56)	0.172 (4.37)	0.109 (2.77)	0.14-0 (3.56)	0.172 (4.37)
9	04-A07*	04-A05*	04-A08*	04-A06*	02-A*	25-A01*†	25-A02*†	25-A03*†	13-A01*†	13-A02*†	13-A03*†	19-A01*†	19-A02*†	19-A03*†
15-	04-B07*	04-B05*	04-B08*	04-B06*	02-B*	25-B01*†	25-B02*†	25-B03*†	13-B01*†	13-B02*†	13-B03*†	19-B01*†	19-B02*†	19-B03*†
21-	04-C07*	04-C05*	04-C08*	04-C06*	02-C*	25-C01*†	25-C02*†	25-C03*†	13-C01*†	13-C02*†	13-C03*†	19-C01*†	19-C02*†	19-C03*†
25-	04-D07*	04-D05*	04-D08*	04-D06*	02-D*	25-D01*†	25-D02*†	25-D03*†	13-D01*†	13-D02*†	13-D03*†	19-D01*†	19-D02*†	19-D03*†
31	04-E07*	04-E05*	04-E08*	04-E06*	02-E*	25-E01*†	25-E02*†	25-E03*†	13-E01*†	13-E02*†	13-E03*†	19-E01*†	19-E02*†	19-E03*†
37	04-F07*	04-F05*	04-F08*	04-F06*	02-F*	25-F01*†	25-F02*†	25-F03*†	13-F01*†	13-F02*†	13-F03*†	19-F01*†	19-F02*†	19-F03*†
51	04-G07*	04-G05*	04-G08*	04-G06*	02-G*	26-G01*†	26-G02*†	26-G03*†	14-G01*†	14-G02*†	14-G03*†	20-G01*†	20-G02*†	20-G03*†
100	04-H07*	04-H05*	04-H08*	04-H06*	02-H*	27-H01*†	27-H02*†	27-H03*†	15-H01*†	15-H02*†	15-H03*†	21-H01*†	21-H02*†	21-H03*†

* C = Cadmium
N = Electroless Nickel
† N = No Jackpost
P = Jackpost Installed