

ITT Cannon MIKQ Series Push-Pull Micro-miniature Connectors



QUICK-MATING PUSH-PULL MICRO-MINIATURE CONNECTOR

ITT Cannon MIKQ series push-pull micro-miniature connectors have a simple push-pull locking coupling system for quick mating and disconnect. The MIKQ series is rugged, lightweight and small while offering very high performance. MIKQ miniature connectors are often used on panel-to-cable applications, as medical connectors, and in avionics, test sets, communication equipment and high-reliability cameras. The heart of this ITT Cannon plug is the POSALINE MicroPin system, offering uncompromised performance and assuring high normal force, excellent wipe, and superior shock and vibration performance. The MIKQ series is available as a 7 pin connector, a 19 pin connector and 37 pin connector. For full details on the ITT Cannon MIKQ series micro-miniature connectors, see the product specifications below.

APPLICATIONS

- Medical equipment
- Avionics
- Test sets
- Head sets
- Communication equipment
- High-reliability cameras

FEATURES

- Push-pull coupling
- High density .050" spacing
- Front and rear panel mounting
- Pre-wired for easy assembly
- Fully potted wires for sealing and strain relief
- 100% electrically tested
- Available with shielded cable

TECH SPECS

MATERIALS & FINISHES

Shell	Brass per QQ-B-626
Coupling Ring	Beryllium copper
Shell Plating	Electroless nickel
Contacts	Copper alloy per 83513-Style
Contact Plating	Gold plate 50 microinches per MIL-G-45204
Insulator	Glass filled thermoplastic per MIL-M-24519
Wires	Insulated 26 AWG 19/38 stranded silver plated with TFE Teflon insulation per MIL-W-22759/11, color coded per MIL-STD-681 system 1. Uninsulated 25 AWG gold-plated copper per QQ-S-343
Potting	Epoxy

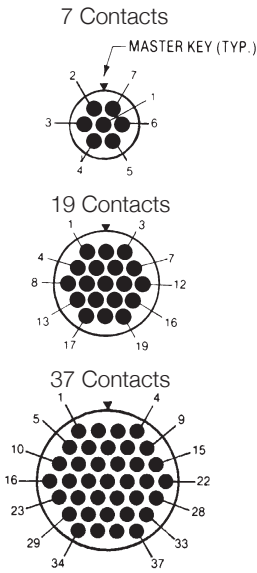
ELECTRICAL DATA

Dielectric Withstanding Voltage	900 Vac at sea level
Current Rating	3 Amps maximum
Wire Range Sizes	25-26 AWG standard (24-32 AWG special)
Contact Resistance	8 milliohms maximum
Insulation Resistance	5000 megaohms minimum

MECHANICAL DATA

Operating Temperature	-55°C to 125°C (-67°F to 257°F)
Mating Life	500 cycles minimum
Vibration	20 g's
Shock	50 g's
Coupling Strength	50 pounds (222 newtons) minimum
Number of Circuits	7, 19 and 37

MATING FACE OF PIN INSERT



NUMBER OF CONTACTS	PLUGS WITH SOCKET CONTACTS	RECEPTACLES WITH PIN CONTACTS		
		** ADD WIRE LENGTH CODE		
7	MIKQ6-7SH156	MIKQ6-7SH07**	MIKQ9-7PH07**	MIKQ7-7PH07**
19	MIKQ6-19SH58	MIKQ6-19SH07**	MIKQ9-19PH07**	MIKQ7-19PH07**
37	MIKQ6-37SH6	MIKQ6-37SH07**	MIKQ9-37PH07**	MIKQ7-37PH07**

****WIRE LENGTH CODE**

2 = 6" leads
 4 = 18" leads
 6 = 36" leads
 Other lengths and special cables are available, please contact us.

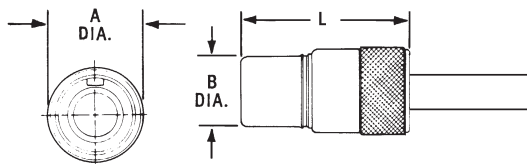
EXAMPLE: MIKQ7-37PH07**6**



(Depicts 36" lead)

DIMENSIONS

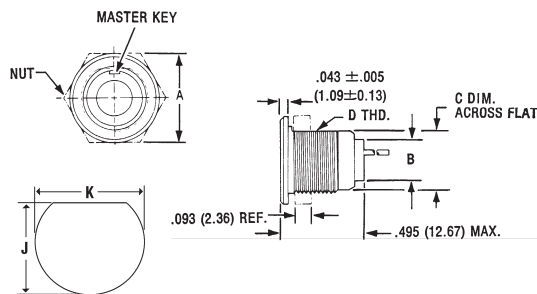
MIKQ6 PLUG



NUMBER OF CONTACTS	A DIA. MAX.	B DIA. MAX.	L MAX.	AVG. WEIGHT OZ. (GM.) +/- 5%	THREAD* UNEF-2B
7	.385 (9.78)	.305 (7.75)	.760 (19.30)	.214 (6.08)	-
19	.515 (13.08)	.405 (10.29)	.760 (19.30)	.376 (10.70)	3/8-32
37	.760 (19.30)	.635 (16.13)	.760 (19.30)	.714 (20.23)	5/8-24

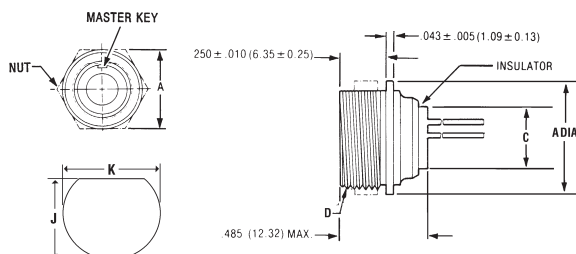
*Back potting varies, threads may not be useable

MIKQ7 FRONT MOUNT RECEPTACLE



NUMBER OF CONTACTS	A MAX.	B MAX.	C MAX.	D THREAD UNEF-2A	AVG. WEIGHT OZ. (GM.) +/- 5%	J +/- .005 (.13)	K DIA.
7	.510 (12.95)	.245 (6.22)	.359 (9.12)	3/8-32	.128 (3.63)	.364 (9.24)	.390 (9.91)
19	.575 (14.60)	.345 (8.76)	.470 (11.94)	1/2-28	.214 (6.08)	.475 (12.06)	.515 (13.08)
37	.855 (21.71)	.520 (13.20)	.740 (18.80)	3/4-20	.300 (8.52)	.740 (18.78)	.757 (19.17)

MIKQ9 REAR MOUNT RECEPTACLE



NUMBER OF CONTACTS	A MAX.	C MAX.	D THREAD UNEF-2A	J +/- .005 (.13)	K DIA.
7	.570 (14.48)	.245 (6.22)	7/16-28	.425 (10.76)	.440 (11.18)
19	.635 (16.13)	.345 (8.76)	9/16-24	.535 (13.58)	.564 (14.33)
37	.885 (22.48)	.505 (12.83)	3/4-20	.740 (18.78)	.755 (14.17)

All dimensions in inches (millimeters in parentheses) unless otherwise stated.