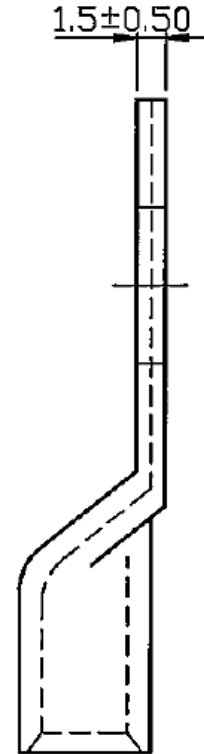
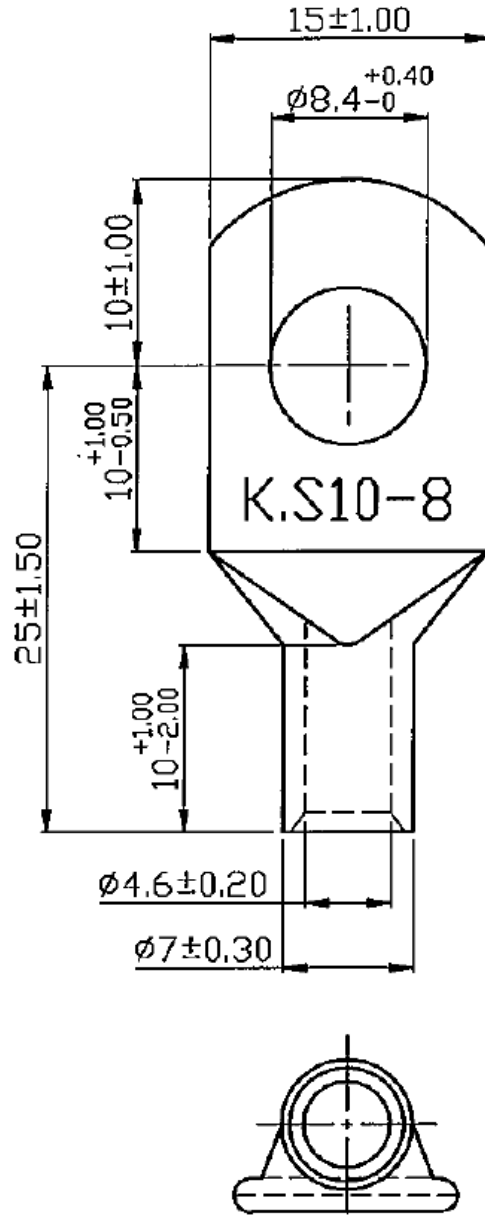


REVISIONS				DRAW	APPD	DATE
REV	ZONE	ECO#	DESCRIPTION	KC	-	
A			INITIAL RELEASE			



NOTES:

1. MAXIMUM ELECTRIC CURRENT: AWG 8: 70A
2. WIRE RANGE: 8 AWG (10 mm²)
3. SURFACE TREATMENT: TIN PLATED
4. THICKNESS: 1.20 mm

NOTE: CAD GENERATED DRAWING DO NOT UPDATE MANUALLY.

TITLE				PART NUMBER		
8 AWG LUG, NON-INSULATED				IPACC-T-LK10-8		
UNLESS OTHERWISE SPECIFIED, DIMENSIONS ARE IN MM						
TOLERANCE EXCEPT AS NOTED:						
Ø 14 mm		10-20		18-30mm		10-40
Ø 12.5mm		10-30		30-75mm		10-50
THIRD ANGLE PROJECTION						
DATE CODE	SIZE	SCALE	NTS	DRAW	APPD	DATE
2A589	A		NTS	KC	-	4/7/2020
SHEET 1 OF 1				REV	A	
©COPYRIGHT 2018 PEI-GENESIS ENGINEERING PRODUCT DEVELOPMENT				NOTICE OF CONFIDENTIALITY		
				THIS DRAWING IS THE PROPERTY OF PEI-GENESIS. ALL RIGHTS RESERVED. REPRODUCTION BY ANY MEANS OR DISTRIBUTION TO THIRD PARTIES IS STRICTLY PROHIBITED WITHOUT THE WRITTEN PERMISSION OF AN AUTHORIZED AGENT OF PEI-GENESIS.		



2180 Hornig Road, Philadelphia, PA 19116