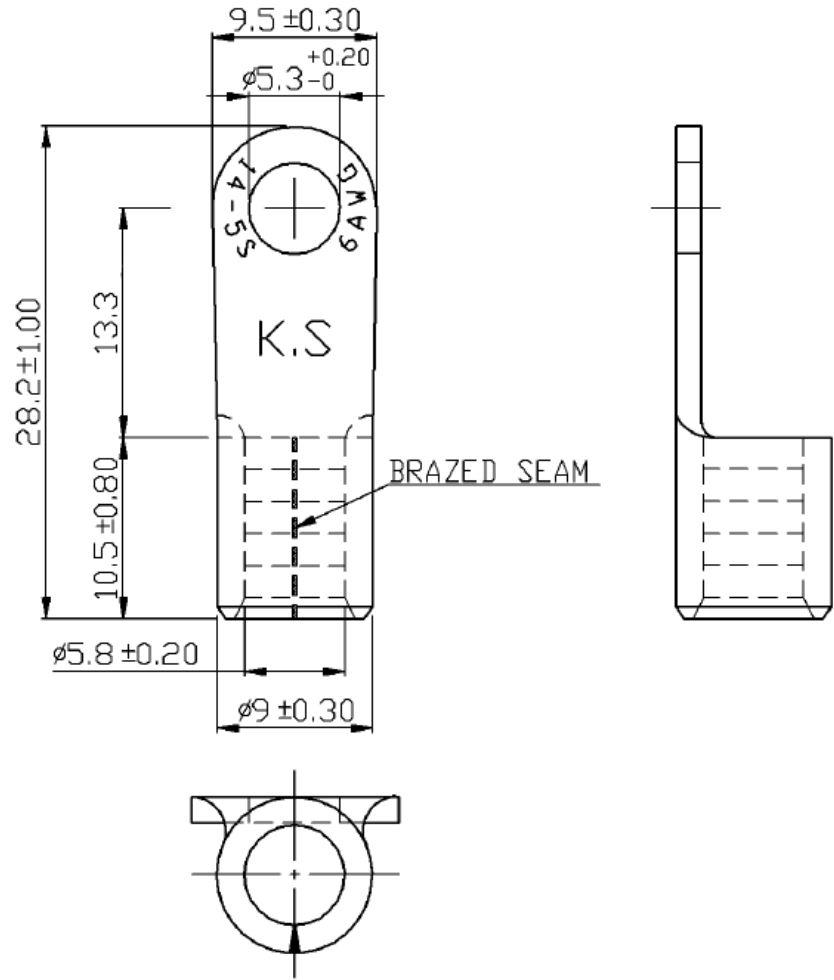


REVISIONS				DRAW	APPD	DATE
REV	ZONE	ECO#	DESCRIPTION	KC	-	
A			INITIAL RELEASE			



- NOTES:**
1. MAXIMUM ELECTRIC CURRENT: AWG 6: 95A
 2. WIRE RANGE: 6 AWG (14 mm²)
 3. SURFACE TREATMENT: TIN PLATED
 4. THICKNESS: 1.50 mm

NOTE: CAD GENERATED DRAWING DO NOT UPDATE MANUALLY.

PART NUMBER		PART NUMBER		PART NUMBER	
6 AWG RING TERM, NON-INSULATED		IPACC-R-NBS14-5		SURE-SEAL	
UNLESS OTHERWISE SPECIFIED, DIMENSIONS ARE IN MM		TOLERANCE EXCEPT AS NOTED:		2180 Hornig Road, Philadelphia, PA 19116	
Ø 14 mm ±0.20		18-30mm ±0.40		NOTICE OF CONFIDENTIALITY	
Ø 25.8mm ±0.30		30-75mm ±0.50		THIS DRAWING IS THE PROPERTY OF PEI-GENESIS. ALL RIGHTS RESERVED. REPRODUCTION BY ANY MEANS OR DISTRIBUTION TO THIRD PARTIES IS STRICTLY PROHIBITED WITHOUT THE WRITTEN PERMISSION OF AN AUTHORIZED AGENT OF PEI-GENESIS.	
THIRD ANGLE PROJECTION		DATE		DATE	
2A589		4/3/2020		4/3/2020	
SIZE		SCALE		SHEET	
A		N/A		1 OF 1	
DRAW		APPD		REV	
KC		-		A	
DATE		DATE		DATE	
4/3/2020		4/3/2020		4/3/2020	
DRAW		APPD		REV	
KC		-		A	
DATE		DATE		DATE	
4/3/2020		4/3/2020		4/3/2020	