

HYDRAULIC PRESSURE TRANSMITTER

Swiss based Trafag is a leading international supplier of high quality sensors and monitoring instruments for measurement of pressure and temperature. The hydraulic pressure transmitter NAH 8254 with increased accuracy of 0.3% and optional switching outputs has an exceptionally long-term stable thin-film-on-steel sensor cell with triple (optionally 5-fold) overpressure protection. The robust design and the wide temperature range of -40°C to +125°C make the NAH 8254 the ideal solution when pressure needs to be measured accurately and reliably under rough environmental conditions.



Applications

- Machine tools
- Hydraulics
- Process technology
- Measuring and test bench technology

Features

- Measuring accuracy 0.3 %
- Completely welded steel sensor system without additional seals
- Excellent long-term stability
- Optional: 5-fold overpressure resistance
- Optional: Switching output 1 or 2 PNP transistors

Technical Data			
Measuring principle	Thin-film-on-steel	Accuracy @ 25°C typ.	± 0.3 % FS typ.
Measuring range	0 ... 2.5 to 0 ... 600 bar 0 ... 30 to 0 ... 7500 psi	Media temperature	-40°C ... +125°C
Output signal	4 ... 20 mA, 0.5 ... 4.5 VDC, 0 ... 5 VDC, 1 ... 5 VDC, 1 ... 6 VDC, 0 ... 10 VDC, 1 ... 10 VDC, 0.1 ... 10.1 VDC, 0.5 ... 4.5 VDC ratiometric, Switching output: 1 or 2 PNP transistors	Ambient temperature	-40°C ... +125°C (Cable PVC 22: -5°C ... +60°C) (Cable PUR 24: -40°C ... +70°C)

11/2018

Data sheet H72304I

Subject to change

Ordering information/type code

				8254 . XX	XX	XX	XX	XX	XX
Measuring range ¹⁾	Pressure measurement range [bar]	Over pressure [bar]	Burst pressure [bar]	Pressure measurement range [psi]	Over pressure [psi]	Burst pressure [psi]			
	0 ... 2.5	7.5	50	75	0 ... 30	90	700	G5	
	0 ... 4	12	60	76	0 ... 50	150	850	G6	
	0 ... 6	18	100	77	0 ... 100	300	1450	G7	
	0 ... 10	30	200	78	0 ... 150	450	2500	G8	
	0 ... 16	48	200	79	0 ... 200	600	2500	GA	
	0 ... 25	75	300	80	0 ... 250	750	2500	G9	
	0 ... 40	120	300	81	0 ... 300	900	4000	HA	
	0 ... 60	180	400	82	0 ... 400	1200	4000	H0	
	0 ... 100	300	500	83	0 ... 500	1500	4000	H1	
	0 ... 160	480	750	85	0 ... 1000	3000	5000	H2	
	0 ... 250	750	1000	74	0 ... 1500	4500	7000	H3	
	0 ... 400	1000	2000	84	0 ... 2000	6000	10000	H5	
	0 ... 600	1500	2500	86	0 ... 3000	9000	14500	G4	
	Option 5P:	Fivefold overpressure			0 ... 5000	12500	21750	H4	
	0 ... 2.5	12.5	60	55	0 ... 7500	18750	29000	H6	
	0 ... 4	20	100	56					
	0 ... 6	30	200	57					
	0 ... 10	50	200	58					
	0 ... 16	80	300	59					
	0 ... 25	125	300	60					
	0 ... 40	200	400	61					
	0 ... 60	300	500	62					
	0 ... 100	500	750	63					
	0 ... 160	800	1000	65					
Sensor	Relative pressure, accuracy: 0.3 %						23		
Pressure connection	G1/4" male, seal: DIN 3869 (accessory 61/63/83)						17		
	G1/4" male (Manometer) EN 871 ⁹⁾						53		
	1/4" NPT male						30		
	1/8" NPT male ^{5) 9)}						43		
	7/16"-20UNF female SAE J512 with valve opener ⁴⁾						24		
	7/16"-20UNF female SAE J512 without valve opener ⁴⁾						44		
	7/16"-20UNF male, DIN3866 ⁴⁾						18		
	7/16"-20UNF SAE4 male, seal: accessory 61						42		
	R1/4" male, DIN3858 ⁵⁾						19		
	R1/4" male, DIN2999 ⁹⁾						20		
	R1/8" male, DIN3858 ⁵⁾						16		
	M10x1 male, DIN EN ISO 6149-2, seal: accessory 61						32		
	M12x1.5 male, DIN EN ISO 9974-2, seal: accessory 61 ⁹⁾						49		
	Electrical connection	Male electrical plug, industrial standard, contact distance 9.4 mm, Mat. PA						01	
Male electrical plug M12x1, 4-pole, Mat. PA, IEC 61076-2-101						32			
Male electrical plug M12x1, 5-pole, Mat. PA, IEC 61076-2-101						35			
Male electrical plug MIL-C 26482, 6-pole, metal						02			
Cable IP67, Mat. PVC ⁷⁾						22			
Cable IP67, Mat. PUR ⁷⁾						24			
Cable IP67, Mat. EPD Raychem FDR25 ⁷⁾						08			

Output signal	Signal output	Load resistance	I (supply)	U (supply)	
	4 ... 20 mA	See graphic		24 (9 ... 32) VDC	19
	0.5 ... 4.5 VDC	≥ 5.0 kΩ to Us-	≤ 20 mA	24 (9 ... 32) VDC	20
	0 ... 5 VDC	≥ 5.0 kΩ to Us-	≤ 20 mA	24 (9 ... 32) VDC	14
	1 ... 5 VDC	≥ 5.0 kΩ to Us-	≤ 20 mA	24 (9 ... 32) VDC	25
	1 ... 6 VDC	≥ 5.0 kΩ to Us-	≤ 20 mA	24 (9 ... 32) VDC	16
	0 ... 10 VDC	≥ 5.0 kΩ to Us-	≤ 15 mA	24 (15 ... 32) VDC	17
	1 ... 10 VDC	≥ 5.0 kΩ to Us-	≤ 15 mA	24 (15 ... 32) VDC	26
	0.1 ... 10.1 VDC	≥ 5.0 kΩ to Us-	≤ 15 mA	24 (15 ... 32) VDC	13
	0.5 ... 4.5 VDC ratiom.	≥ 5.0 kΩ to Us-	≤ 10 mA	5 (4.75 ... 5.25) VDC	23
	2 PNP transistors ³⁾		≤ 10 mA	24 (9 ... 32) VDC	PS
	1 PNP transistor ³⁾		≤ 10 mA	24 (9 ... 32) VDC	T1
Accessories	Female electrical plug M12x1, 5-pole ²⁾				33
	Female electrical connector industrial standard (for electrical connection 01)				34
	Pressure peak damping element ø 1.0 mm ⁴⁾				40
	Pressure peak damping element ø 0.4 mm ⁴⁾				44
	Seal FPM, -18°C ... +125°C				61
	Seal EPDM, -40°C ... +125°C				63
	Seal NBR, -25°C ... +100°C				83
	Special electrical connection: Pin 2 +, Pin 3 Ground, Pin 4 - (only for output signal 19 and male electrical plug 01, industrial standard)				90
	Special electrical connection: Pin 1 Out, Pin 2 +, Pin 3 Ground, Pin 4 - (only for output signals 14, 16, 17, 23 and male electrical plug 01, industrial standard)				91
	Special electrical connection: Pin 1 +, Pin 2 Ground, Pin 3 Out, Pin 4 - (only for output signals 13, 14, 16, 17, 20, 23, 25 and male electrical plug 32, M12x1, 4-pole)				95
	Special electrical connection: Pin 1 +, Pin 2 Ground, Pin 3 -, Pin 4 Out (only for output signals 14, 16, 17, 23 and male electrical plug 32, M12x1, 4-pole)				96
	Special electrical connection: Pin 1 +, Pin 2 -, Pin 4 Ground (only for output signal 19 and male electrical plug 01, industrial standard)				92
	Special electrical connection: Pin 1 +, Pin 2 -, Pin 4 Ground (only for output signal 19 and male electrical plug 32, M12x1, 4-pole)				E1
	Special electrical connection: Pin 1 +, Pin 2 -, Pin 3 Out, Pin 4 Ground (only for output signals 14, 16, 17, 23 and male electrical plug 32, M12x1, 4-pole)				E2
	Special electrical connection: Pin 1 Out, Pin 2 -, Pin 3 +, Pin 4 Ground (only for output signals 13, 14, 16, 17, 20, 23, 25 and male electrical plug 01, industrial standard)				E3
	Special electrical connection: Pin 1 +, Pin 2 Ground, Pin 4 - (only for output signal 19 and male electrical plug 32, M12x1, 4-pole)				E6
	Cable length 0.5 m				EM
	Cable length 1.0 m				1M
	Cable length 2.0 m				2M
	Parameterization according to customer specification for output signal PS, T1 (see table "Parameters")				ZC
	Parametrisation standard (see table "Parameters")				ZS
	Signal processing, cut-off frequency (see table Signal processing)				

¹⁾ Customized pressure ranges upon request

²⁾ For electrical connections 32 and 35

³⁾ Only with electrical connections 32, 22, 24, 08

⁴⁾ Max. allowable pressure range 60 bar at 120 bar overpressure

⁵⁾ Max. allowable pressure range 160 bar at 500 bar overpressure

⁶⁾ Not for pressure connections 53, 24, 44, 18

⁷⁾ Cable length see accessories

⁸⁾ According to norm J1926, max. 35 MPa

⁹⁾ Upon request

¹⁰⁾ Only with electrical connections 32, 35 with shielded cable and 22, 24, 08

Signal processing, 4 ... 20 mA, 0.5 ... 4.5 VDC ratiometric

Code	Cut-off frequency f_G	Rise time (10 ... 90 % nominal pressure)
GA ⁹⁾	11 Hz	32 ms
GU ⁹⁾¹⁰⁾	20 kHz	18 μs
Standard specification	350 Hz	1 ms

Standard products (extra short lead time)

Product No.	Type Code	Pressure range [bar]	Over pressure max. [bar]	Supply [VDC]	Accuracy @ 25°C typ. [%]
NAH2.5A	8254 75 2317 32 0000 0000 19 33 44 61	0 ... 2.5	7.5	9 ... 32	± 0.3
NAH4.0A	8254 76 2317 32 0000 0000 19 33 44 61	0 ... 4	12	9 ... 32	± 0.3
NAH6.0A	8254 77 2317 32 0000 0000 19 33 44 61	0 ... 6	18	9 ... 32	± 0.3
NAH10.0A	8254 78 2317 32 0000 0000 19 33 44 61	0 ... 10	30	9 ... 32	± 0.3
NAH16.0A	8254 79 2317 32 0000 0000 19 33 44 61	0 ... 16	48	9 ... 32	± 0.3
NAH25.0A	8254 80 2317 32 0000 0000 19 33 44 61	0 ... 25	75	9 ... 32	± 0.3
NAH40.0A	8254 81 2317 32 0000 0000 19 33 44 61	0 ... 40	120	9 ... 32	± 0.3
NAH100.0A	8254 83 2317 32 0000 0000 19 33 44 61	0 ... 100	300	9 ... 32	± 0.3
NAH250.0A	8254 74 2317 32 0000 0000 19 33 44 61	0 ... 250	750	9 ... 32	± 0.3
NAH400.0A	8254 84 2317 32 0000 0000 19 33 44 61	0 ... 400	1000	9 ... 32	± 0.3
NAH600.0A	8254 86 2317 32 0000 0000 19 33 44 61	0 ... 600	1500	9 ... 32	± 0.3

Parameters				
Name	Standard setting (accessory ZS)	Value range	Short name	Customer adjustment (accessory ZC)
Switch point SP1 (hysteresis mode) Upper switch point FH1 (window mode)	75 % Measuring range	> RP1, FL1 Hysteresis \geq 1 % FS	SP1	
Reset point RP1 (hysteresis mode) Lower switch point FL1 (window mode)	25 % Measuring range	< SP1, FH1 Hysteresis \geq 1 % FS	RP1	
Switch point SP2 (hysteresis mode) Upper switch point FH2 (window mode)	75 % Measuring range	> RP2, FL2 Hysteresis \geq 1 % FS	SP2	
Reset point RP2 (hysteresis mode) Lower switch point FL2 (window mode)	25 % Measuring range	< SP2, FH2 Hysteresis \geq 1 % FS	RP2	
Switch point delay time SP1 / RP1 (hysteresis mode) Switch point delay time FH1 / FL1 (window mode)	0	0; 2 ^x [ms], x = 3, 4 ... 16	dS1	
Switch point delay time SP2 / RP2 (hysteresis mode) Switch point delay time FH2 / FL2 (window mode)	0	0; 2 ^x [ms], x = 3, 4 ... 16	dS2	
Functions switching output 1	Hysteresis, closer (Hno)	Hysteresis NO (Hno), Hysteresis NC (Hnc) Window NO (Fno), Window NC (Fnc)	ou1	
Functions switching output 2	Hysteresis, closer (Hno)	Hysteresis NO (Hno), Hysteresis NC (Hnc) Window NO (Fno), Window NC (Fnc) Device ready	ou2	

i Parameterization of switching points

The switching points, delay times and output functions can be parameterized via Smartphone app (Android). The SMI Sensor Master Interface required for the parameterization as well as the Smartphone are not part of the delivery. The Android App is available for free in the Google Play Store.

- Ordering No. SMI Sensor Master Interface: F90170
- Data sheet SMI Sensor Master Interface: H72618



Specifications		
Electrical Data	Output / supply voltage	4 ... 20 mA: 24 (9...32) VDC 0.5 ... 4.5 VDC: 24 (9...32) VDC 0 ... 5 VDC: 24 (9...32) VDC 1 ... 5 VDC: 24 (9...32) VDC 1 ... 6 VDC: 24 (9...32) VDC 0 ... 10 VDC: 24 (15...32) VDC 1 ... 10 VDC: 24 (15...32) VDC 0.1 ... 10.1 VDC: 24 (15...32) VDC 0.5 ... 4.5 VDC ratiom., 10 ... 90% U_{supply} : 5 ± 0.25 VDC 1 or 2 PNP transistors: 24 (9...32) VDC
	Switch-on-delay pressure transmitters	100 ms
	Switch-on-delay pressure switches	50 ms + switching delay time
	Inverse-polarity protection, short-circuit strength @ 25°C during 5 min.	4...20 mA: to $U_s = 32$ VDC 0.5...4.5 VDC, 0...5 VDC, 1...5 VDC, 1...6 VDC, 0...10 VDC, 1...10 VDC, 0.1...10.1 VDC: to $U_s = 28$ VDC 0.5...4.5 VDC ratiometric: to $U_s = 14$ VDC 1 or 2 PNP transistors: to $U_s = 32$ VDC
Environmental conditions	Media temperature	-40°C ... +125°C
	Ambient temperature	-40°C ... +125°C (Cable PVC 22: -5°C ... +60°C) (Cable PUR 24: -40°C ... +70°C)
	Protection ¹⁾	IP65, IP67
	Humidity	Max. 95 % relative
	Vibration	15 g RMS (20...2000 Hz) (EN60068-2-64) 25 g sin (80...2000 Hz), 1 oct./min, (1x @ 25°C) (EN60068-2-6)
	Shock	50 g / 11 ms 100 g / 6 ms Male electrical plug M12x1 (EN60068-2-27) ²⁾
EMC Protection	Emission	EN/IEC 61000-6-3
	Immunity	EN/IEC 61000-6-2
Mechanical Data	Sensor (wetted parts)	1.4542 (AISI630)
	Pressure connection (wetted parts)	1.4542 (AISI630)
	Housing	1.4301 (AISI304)
	Sealing	FPM/EPDM/NBR
	Male electrical plug	See ordering information
	Weight	appr. 50 g
	Mounting torque	25 Nm

¹⁾ See electrical connection

²⁾ For electrical connections 32 and 35

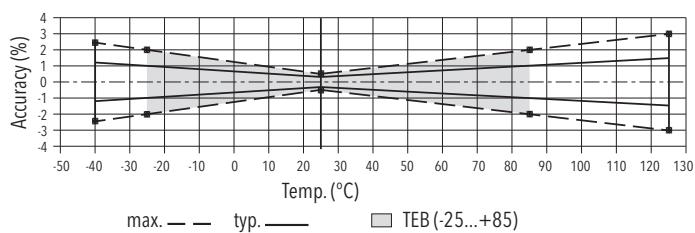
Analogue output

Accuracy	TEB @ -25 ... +85°C	[% FS typ.]	± 1.0
	Accuracy @ +25°C	[% FS typ.]	± 0.3
	NLH @ +25°C (BSL)	[% FS typ.]	± 0.2
	TC zero point and span	[% FS/K typ.]	± 0.01
	Long term stability 1 year	[% FS typ.]	± 0.1
Rise time	Typ. 1 ms / 10 ... 90 % nominal pressure		

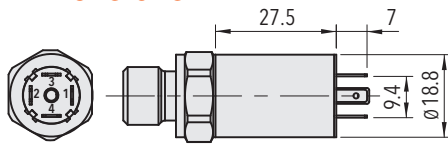
Switching output

Accuracy	TEB @ -25 ... +85°C	[% FS typ.]	± 1.0
	Accuracy @ +25°C	[% FS typ.]	± 0.3
	Long term stability 1 year	[% FS typ.]	± 0.1
Adjustment range of switchpoints	1 ... 99 % FS		
Distance switch point	≥ 1.0 % FS		
Switch point > reset point	Switchpoint > reset point		
Switching resistance	≤ 3 Ω		
Output function	Hysteresis, Window; normally closed (NO), normally open (NC)		
Switching current	-40°C ... +85°C	(Ambient and media temperature)	≤ 400 mA, total of both switching outputs
	+85°C ... +125°C	(Ambient and media temperature)	≤ 200 mA, total of both switching outputs
Current limiting	integrated		
Delay time	0; 2*[ms], x = 3, 4 ... 16		
Switching frequency	max. 60 Hz (at switching delay time = 0)		

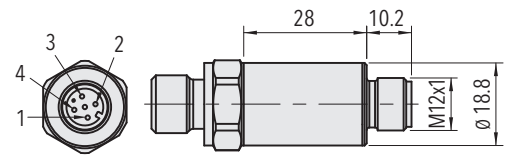
Measuring accuracy



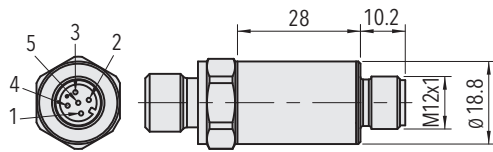
Dimensions



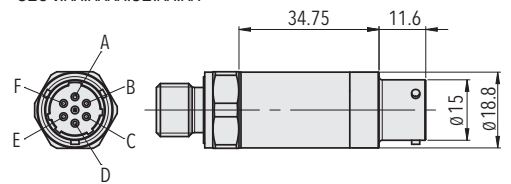
8254.XX.XXXX.01.XX.XX



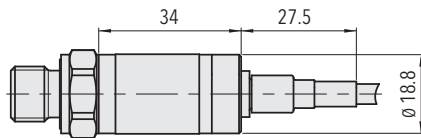
8254.XX.XXXX.32.XX.XX



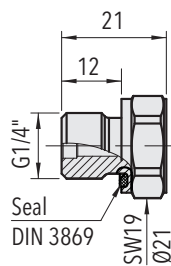
8254.XX.XXXX.35.XX.XX



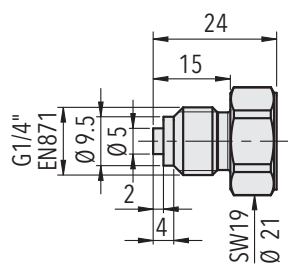
8254.XX.XXXX.02.XX.XX



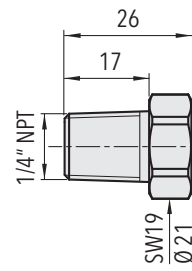
8254.XX.XXXX.22/24/08.XX.XX



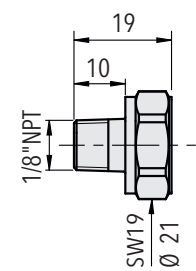
8254.XX.XX17.XX.XX.XX



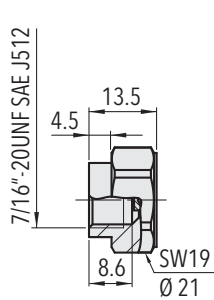
8254.XX.XX53.XX.XX.XX



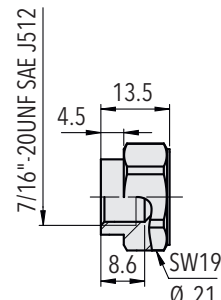
8254.XX.XX30.XX.XX.XX



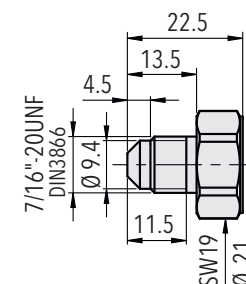
8254.XX.XX43.XX.XX.XX



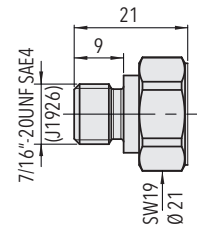
8254.XX.XX24.XX.XX.XX



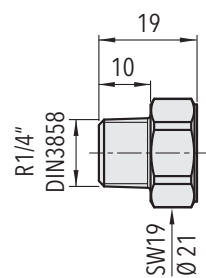
8254.XX.XX44.XX.XX.XX



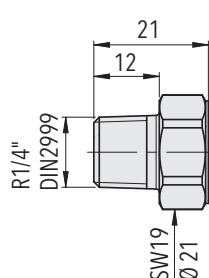
8254.XX.XX18.XX.XX.XX



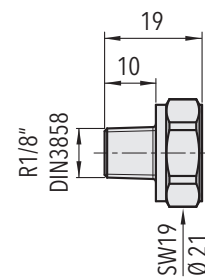
8254.XX.XX42.XX.XX.XX



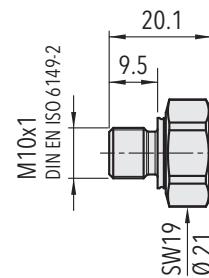
8254.XX.XX19.XX.XX.XX



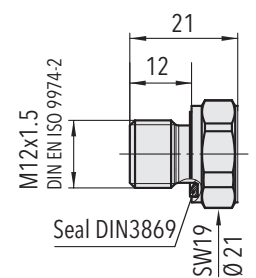
8254.XX.XX20.XX.XX.XX



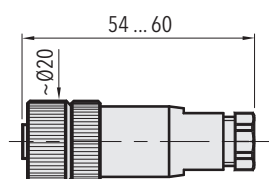
8254.XX.XX16.XX.XX.XX



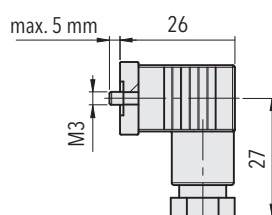
8254.XX.XX32.XX.XX.XX



8254.XX.XX49.XX.XX.XX



8254.XX.XXXX.XX.XX.33



8254.XX.XXXX.XX.XX.34

Electrical connection

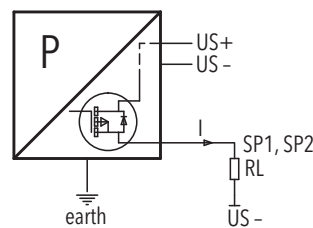
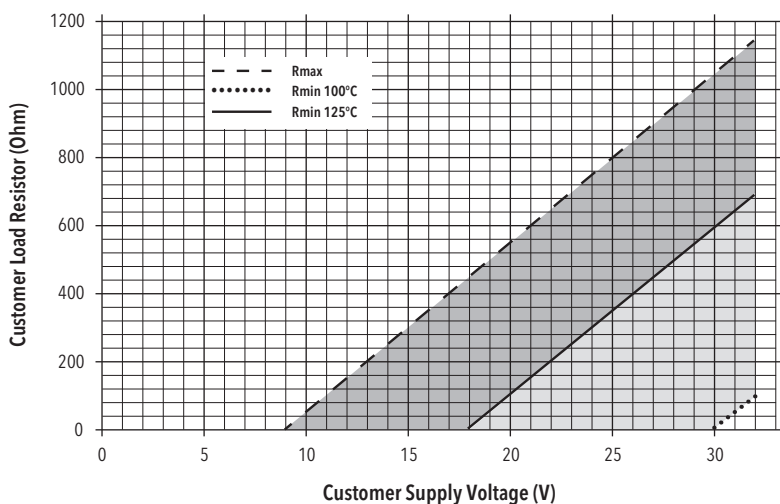
		Protection / electrical connection									
		IP65 *)**)		IP67 *)**)				IP67*)**)		IP67**)	
		Industrial standard Contact distance 9.4 mm		M12x1				MIL-C 26482		Cable	
		01		4-pole 32		5-pole 35		02		22/24	
Output signal	<p>8254.XX.XXXX.XX.19</p>	90	92	E1	E6						
		2	2	1	1	1	1	4	A	white	red
		1	4	2	3	2	4	1	B	brown	black
		4	3	4	4	4	2	5	E	yellow	green
Output signal	<p>8254.XX.XXXXX.13/14/16/17/20/ 23/25/26</p>	91	E3	95	96	E2					
		1	2	3	1	1	1	2		white	red
		2	1	1	2	3	4	3		green	white
		3	4	2	3	4	3	2		brown	black
		4	3	4	4	2	2	4		yellow	green

		Protection / electrical connection					
		IP67 *)**)		IP67**)		IP67**)	
		M12x1 4-pole		Cable		Cable	
		32		22/24		08	
Output signal	<p>8254.XX.XXXX.XX.PS/T1</p>	PS	T1	PS	T1	PS	T1
		1	1	white	white	red	red
		4	4	green	green	white	white
		2	-	yellow	-	green	-
		3	3	brown	brown	black	black

*) Nur mit vorschriftsmässig montierter Kabeldose gültig

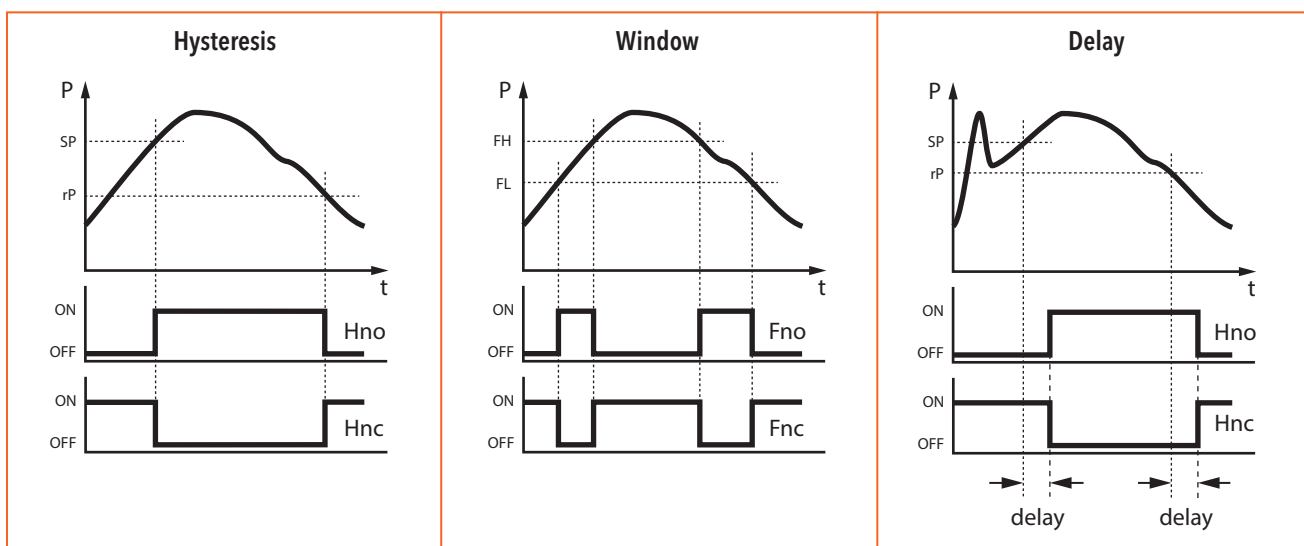
**) Entlüftung über Stecker/Kabel

4...20mA: min./max resistor vs. supply voltage @ Pmax = 100%



Connection of loads to switch contacts

Functions switching output



Additional information

Documents

Data sheet	www.trafag.com/H72304
Instructions	www.trafag.com/H73303
Flyer	www.trafag.com/H70682