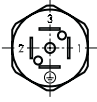
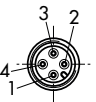
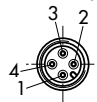
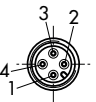
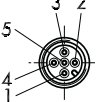
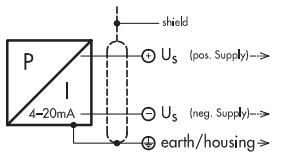
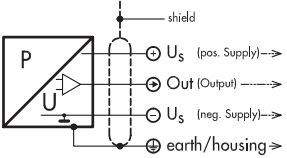


Elektrischer Anschluss / Raccordement électrique / Electrical connection

Schutzart/Protection ¹⁾	IP65 ¹⁾	IP67 ¹⁾			
Ausführung Version Version	Industrial Standard (DIN43650 C193) 01 	M12x1			
		4 poles 32			5 poles 35
		Standard 	with accessory 95 	with accessory 96 	
 4-20mA 825X.XX.XXXX.XX.19	2 1 ⊕	1 3 4	-	-	4 1 5
 U _S (pos. Supply) → Out (Output) → U _S (neg. Supply) → earth/housing → 825X.XX.XXXX.XX.14/16/17/23	1 2 3 ⊕	1 2 3 4	1 3 4 2	1 4 3 2	2 4 3 5

¹⁾ nur mit vorschriftsmässig montierter Kabeldose gültig
valable seulement avec fiche femelle montée selon instructions
provided female connector is mounted according to instructions

Output	Load resistance	I _{SUPPLY}	U _{SUPPLY}	
4 ... 20 mA	(U _{Supply} -9V)/20mA		24(9 ... 32) VDC	825X.XX.XXXX.XX.19...
0 ... 5 VDC	≥2.0 kΩ	≤10 mA	24(9 ... 32) VDC	825X.XX.XXXX.XX.14...
1 ... 6 VDC	≥2.0 kΩ	≤10 mA	24(9 ... 32) VDC	825X.XX.XXXX.XX.16...
0 ... 10 VDC	≥5.0 kΩ	≤10 mA	24(15...32) VDC	825X.XX.XXXX.XX.17...
0.5... 4.5 VDC	≥2.0 kΩ	≤10 mA	5(4.5...5.5) VDC ratiométrisch/ ratiométrique/ ratiometric	825X.XX.XXXX.XX.23...

Einschaltverzögerung / Retard à l'enclenchement / Switch-on delay

1 s

Anziedrehmoment Druckanschluss / Couple de serrage raccord de pression / Torque moment pressure connection

max. 25Nm

Umgebungstemperatur / Température ambiante / Ambient temperature

NAT (8251): -25°C...+85°C (-15...+185°F) / NAH (8253), NAE (8255), NSL (8257): -40°C...+125°C (-40...+260°F)

Lagertemperatur / Température de stockage / Storage temperature

NAT (8251): -25°C...+85°C (-15...+185°F) / NAH (8253), NAE (8255), NSL (8257): -40°C...+125°C (-40...+260°F)

Medientemperatur / Température de fluide / Media temperature

NAT (8251): -25°C...+125°C (-15...+260°F) / NAH (8253), NAE (8255), NSL (8257): -40°C...+125°C (-40...+260°F)

Überdruck / Surpression / Overpressure

Nenndruck Pression nominal Nominal pressure		Überdruck Surpression Over pressure	
[bar]	[psi]	[bar]	[psi]
0 ... 0.2	0 ... 2.5	1.2	5
0 ... 0.4	0 ... 5	1.2	10
0 ... 0.6	0 ... 7.5	1.5	15
0 ... 1	0 ... 15	2	30
0 ... 1.6	0 ... 20	3.5	40
0 ... 2.5	0 ... 30	5	60
0 ... 4	0 ... 50	8	100
0 ... 6	0 ... 100	12	200
0 ... 10	0 ... 150	20	300
-	0 ... 200	-	400

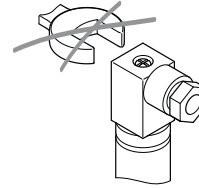
Nenndruck Pression nominal Nominal pressure		Überdruck Surpression Over pressure	
[bar]	[psi]	[bar]	[psi]
0 ... 16	0 ... 250	32	500
-	0 ... 300	-	600
0 ... 25	0 ... 400	50	800
0 ... 40	0 ... 500	80	1000
0 ... 60	0 ... 1000	120	2000
0 ... 100	0 ... 1500	200	3000
0 ... 160	0 ... 2000	320	4000
0 ... 250	0 ... 3000	500	6000
0 ... 400	0 ... 5000	800	10000
0 ... 600	0 ... 7500	1000	15000

Achtung / Attention / Attention

Steckerausführung 01/34:
Nur Originalschraube verwenden

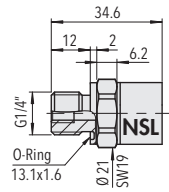
Version fiche femelle 01/34:
Utilisez seulement la vis originale

Version female connector 01/34:
Use only original screw

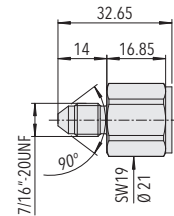
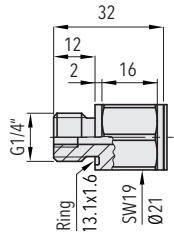


Nicht an Kabeldose drehen
Ne pas tourner la fiche femelle
Do not turn the female connector

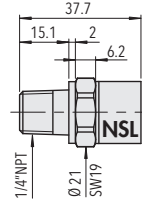
Massbilder / Cotes d'encombrement / Dimensions



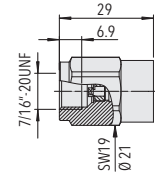
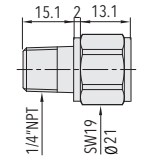
825X.XX **2X17** XX



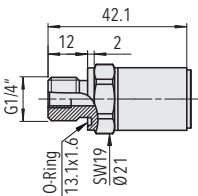
825X.XX **2X18** XX



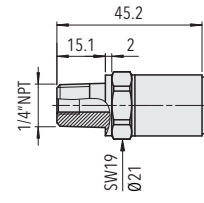
825X.XX **2X30** XX



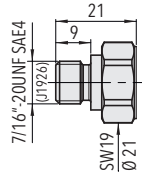
825X.XX **2X24** XX



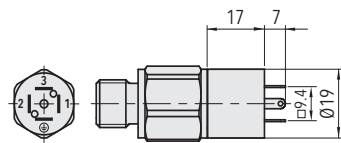
825X.XX **4X17** XX



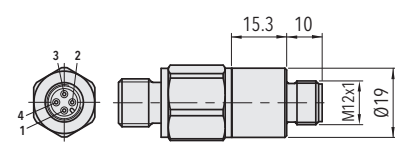
825X.XX **4X30** XX



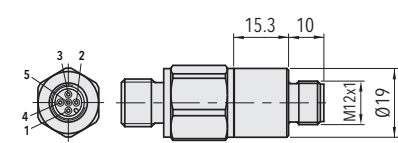
8253.XX **XX42** XX



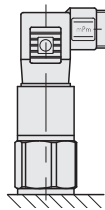
825X.XX.XXXX **01** XX



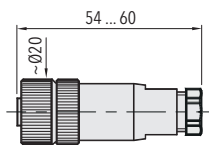
825X.XX.XXXX **32** XX



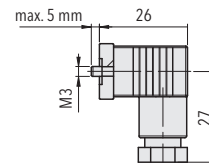
825X.XX.XXXX **35** XX



NSL: Empfohlene Montageposition
NSL: Position de montage recommandée
NSL: Recommended mountig position



825X.XX.XXXX.XX **33**



825X.XX.XXXX.XX **34**