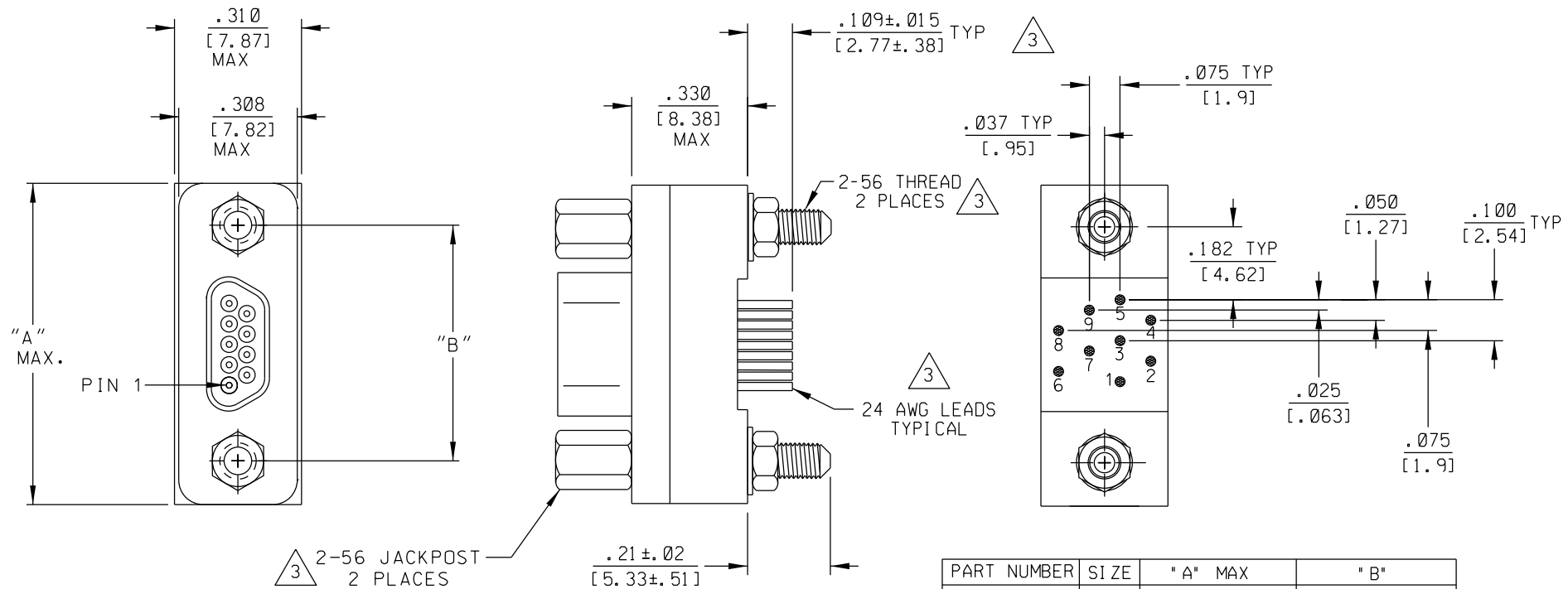


PART REV	DWG ISSUE	DATE	ECN NO.	APPVD BY	REL BY



PART NUMBER	SIZE	"A" MAX	"B"
836111617	9	.785 [19.94]	.565 [14.35]
836121617	15	.935 [23.75]	.715 [18.16]
836131617	21	1.085 [27.56]	.865 [21.97]
836141617	25	1.185 [30.10]	.965 [24.51]
836151617	31	1.335 [33.91]	1.115 [28.32]
836161617	37	1.485 [37.27]	1.265 [32.13]

- 5. SEE SHEET 2 FOR RECOMMENDED PCB LAYOUTS.
- 4. PERFORMANCE: MEETS OR EXCEEDS REQUIREMENTS OF MIL-DTL-83513
- 3. CONSULT FACTORY FOR AVAILABLE OPTIONS

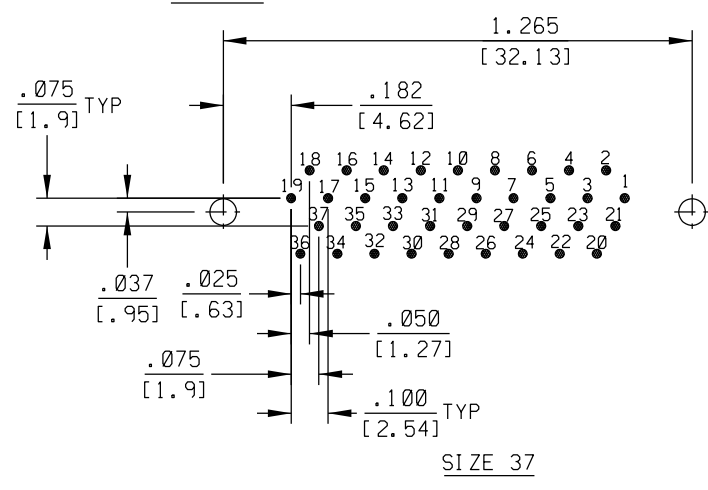
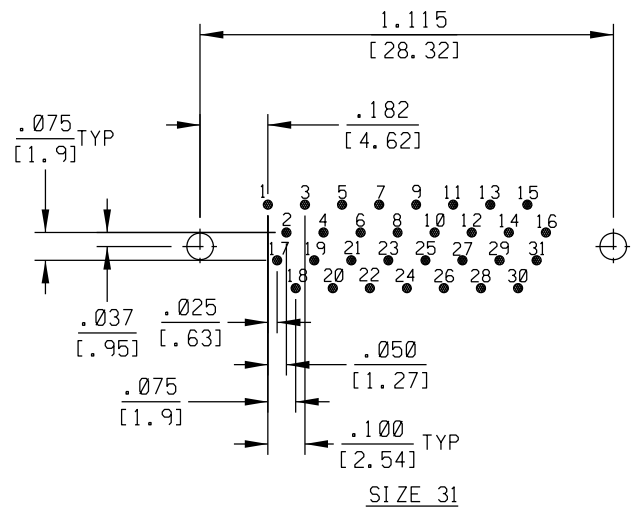
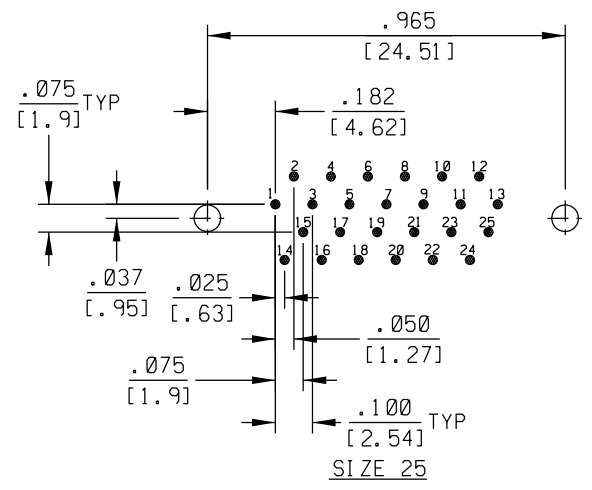
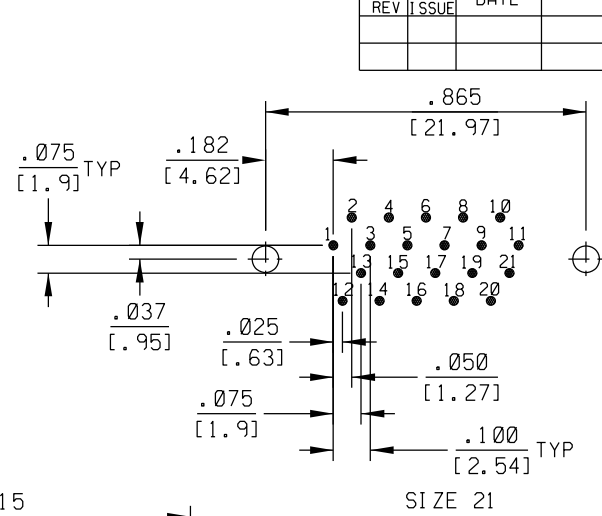
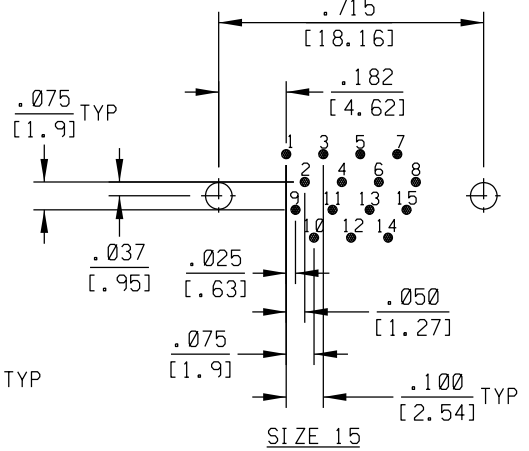
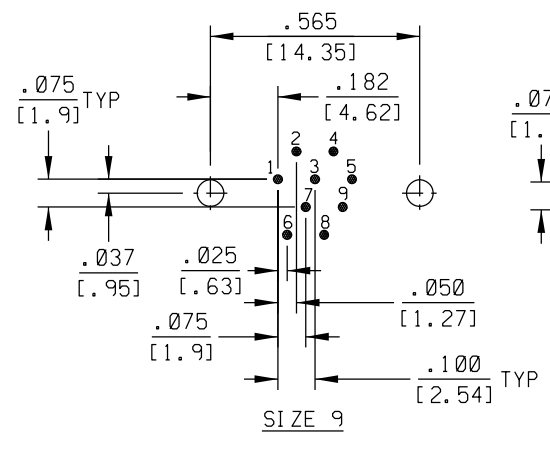
2. MATERIALS:  
 SHELL: 6061-T6 ALUMINUM PER AMS-QQ-A200/8, NICKEL PLATED PER AMS 2404  
 INSULATOR AND BACKSHELL: PPS PER MIL-M-24519 GST-40F, COLOR: BLACK  
 PIN CONTACTS: C17200 BERYLLIUM COPPER PER ASTM B194, GOLD PLATED PER ASTM B488  
 24 AWG LEADS: TIN PLATED COPPER PER A-A-59551 TYPE S  
 HARDWARE: PASSIVATED STAINLESS STEEL IAW MIL-DTL-83513/5

1. MARKING: UMI, DATE CODE, UMI P/N.

NOTES: UNLESS OTHERWISE SPECIFIED.

<b>QUALITY SYMBOLS</b> MAJOR ▼ = 4 CRITICAL ▽ = 0 SPC ▽ = 0	UNLESS SPECIFIED: ALL DIMENSIONS IN INCHES/MM GENERAL TOLERANCES: 3 PLACE ±.005/.13 2 PLACE ±.01/.25 ANGULAR ±2°	SCALE 4 : 1 DWG SIZE B	THIRD ANGLE PROJECTION REVISE ON CAD ONLY	
	Uti-Mate CAGE CODE <b>58967</b>	DRAWN BY & DATE DW 11-11-11 CHECKED BY & DATE APPROVED BY & DATE	TITLE: CIRCUIT CONNECTOR, PLUG (PINS), SIZES 9 THRU 37, STYLE 6 CM6RXXP07-S01 MATERIAL: Uti-Mate Connector Inc.	
	CAD FILENAME SD-8361X1617-1.DGN	PART NO. SEE CHART	DRAWING NO. SD-8361X1617	SHEET NO. 1 OF 2
	THIS DRAWING CONTAINS INFORMATION THAT IS PROPRIETARY TO ULTI-MATE INCORPORATED AND SHOULD NOT BE USED WITHOUT WRITTEN PERMISSION.			REV

PART REV	DWG ISSUE	DATE	ECN NO.	APPVD BY	REL BY



SEE SHEET 1  
 NOTES: UNLESS OTHERWISE SPECIFIED.

QUALITY SYMBOLS MAJOR $\nabla = 4$ CRITICAL $\nabla / C = 0$ SPC $\nabla / S = 0$	UNLESS SPECIFIED: ALL DIMENSIONS IN INCHES/MM GENERAL TOLERANCES: 3 PLACE $\pm .005 / .13$ 2 PLACE $\pm .01 / .25$ ANGULAR $\pm 2^\circ$	SCALE 3 : 1 DWG SIZE B	THIRD ANGLE PROJECTION REVISE ON CAD ONLY	
	DRAWN BY & DATE DW 11-11-11	TITLE: RECOMMENDED PCB LAYOUTS, CIRCUIT CONNECTOR, PLUG (PINS), SIZES 9 THRU 37, CM6RXXP07-S01		
	CHECKED BY & DATE	MATERIAL: SEE SHEET 1		
	APPROVED BY & DATE	Uti-Mate Connector Inc.		
CAD FILENAME SD-8361X1617-2.DGN	Uti-Mate CAGE CODE 58967	PART NO. SEE SHEET 1	DRAWING NO. SD-8361X1617	SHEET NO. 2 OF 2
THIS DRAWING CONTAINS INFORMATION THAT IS PROPRIETARY TO ULTI-MATE INCORPORATED AND SHOULD NOT BE USED WITHOUT WRITTEN PERMISSION.			REV	