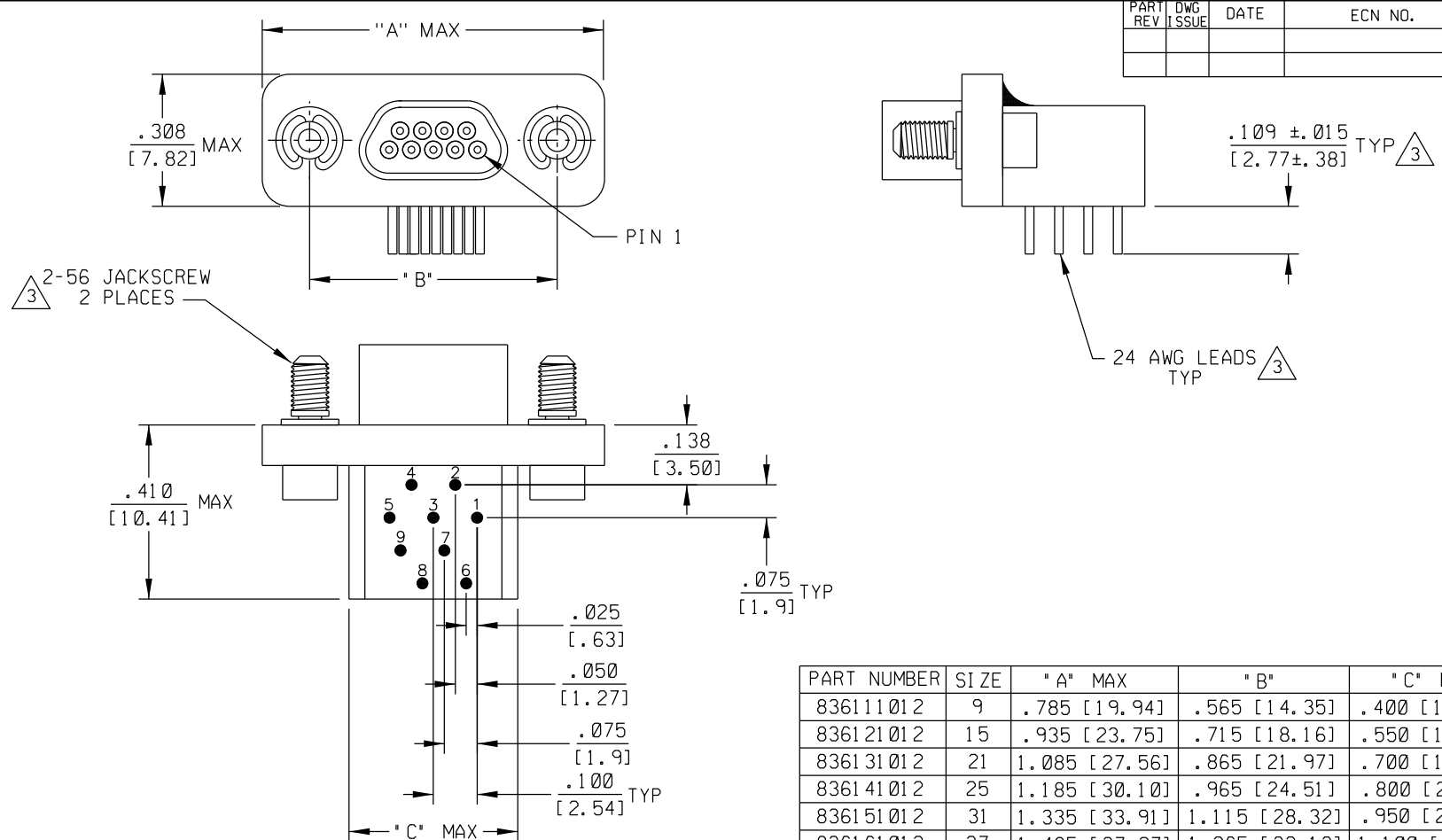


PART REV	DWG ISSUE	DATE	ECN NO.	APPVD BY	REL BY



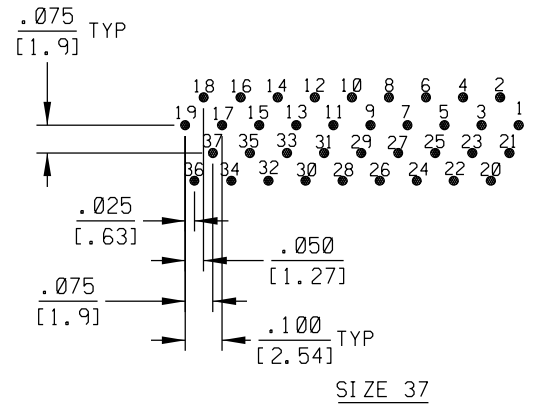
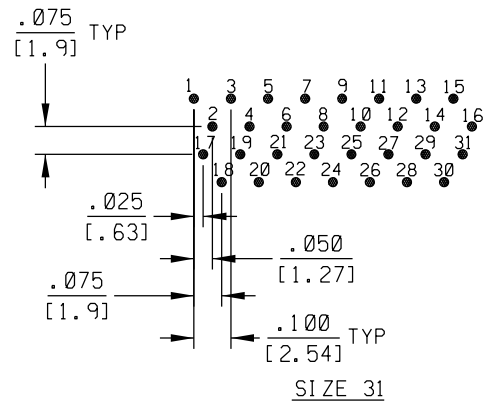
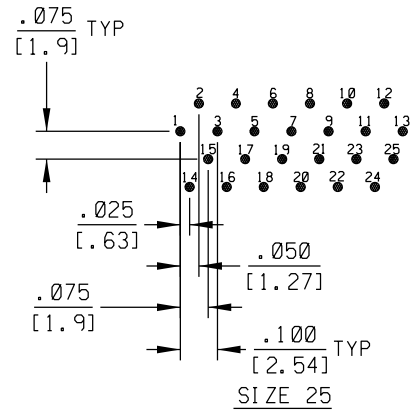
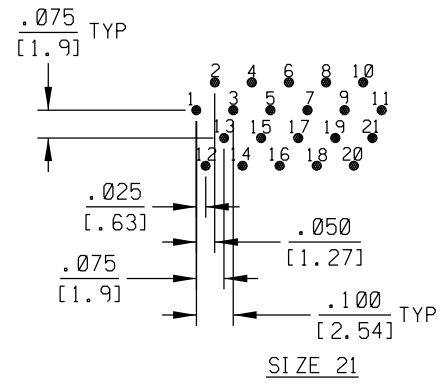
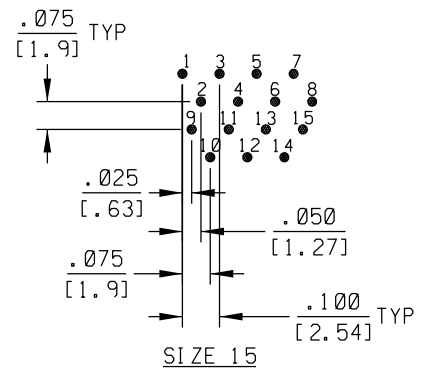
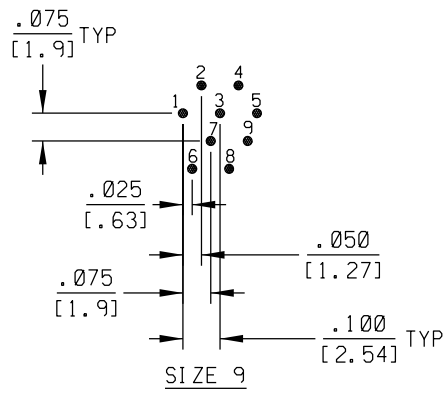
- 5. SEE SHEET 2 FOR RECOMMENDED PCB LAYOUTS.
- 4. PERFORMANCE: MEETS OR EXCEEDS REQUIREMENTS OF MIL-DTL-83513
- 3. CONSULT FACTORY FOR AVAILABLE OPTIONS

2. MATERIALS:
 SHELL: 6061-T6 ALUMINUM PER AMS-QQ-A200/8, NICKEL PLATED PER AMS 2404
 INSULATOR AND BACKSHELL: PPS PER MIL-M-24519 GST-40F, COLOR: BLACK
 PIN CONTACTS: C17200 BERYLLIUM COPPER PER ASTM B194, GOLD PLATED PER ASTM B488
 24 AWG LEADS: TIN PLATED COPPER PER A-A-59551 TYPE S
 HARDWARE: PASSIVATED STAINLESS STEEL IAW MIL-DTL-83513/5

1. MARKING: UMI, DATE CODE, UMI P/N.
 NOTES: UNLESS OTHERWISE SPECIFIED.

QUALITY SYMBOLS MAJOR CRITICAL SPC	UNLESS SPECIFIED: ALL DIMENSIONS IN INCHES/MM	SCALE 4:1	DWG SIZE B	THIRD ANGLE PROJECTION	REVISE ON CAD ONLY
	GENERAL TOLERANCES: 3 PLACE ±.005/.13 2 PLACE ±.01/.25 ANGULAR ±2°	DRAWN BY & DATE DW 11-15-11		TITLE: CIRCUIT CONNECTOR, PLUG (PINS), STYLE 18 (.075 X .075), SIZES 9 THRU 37, CMI8RXXP02-S01	
	Ulti-Mate CAGE CODE 58967	CHECKED BY & DATE		MATERIAL: 2 3 Ulti-Mate Connector Inc.	
		APPROVED BY & DATE	CAD FILENAME SD-8361X1012-1.DGN	PART NO. SEE CHART	DRAWING NO. SD-8361X1012-1
THIS DRAWING CONTAINS INFORMATION THAT IS PROPRIETARY TO ULTI-MATE INCORPORATED AND SHOULD NOT BE USED WITHOUT WRITTEN PERMISSION.					

PART REV	DWG ISSUE	DATE	ECN NO.	APPVD BY	REL BY



SEE SHEET 1
 NOTES: UNLESS OTHERWISE SPECIFIED.

QUALITY SYMBOLS MAJOR = CRITICAL = SPC =	UNLESS SPECIFIED: ALL DIMENSIONS IN INCHES/MM	SCALE 3 : 1 DWG SIZE B	THIRD ANGLE PROJECTION	REVISE ON CAD ONLY	
	GENERAL TOLERANCES: 3 PLACE ±.005 / .13 2 PLACE ±.01 / .25 ANGULAR ±2°	DRAWN BY & DATE DW 11-15-11	TITLE: RECOMMENDED PCB LAYOUTS, STYLE 18 (.075 X .075) PLUG (PINS), SIZES 9 THRU 37, CM18RXP02-S01		
	Ulti-Mate CAGE CODE 58967	CHECKED BY & DATE APPROVED BY & DATE	MATERIAL: SEE SHEET 1	Ulti-Mate Connector Inc.	
	CAD FILENAME SD-8361X1012-2.DGN	PART NO. SEE SHEET 1	DRAWING NO. SD-8361X1012	SHEET NO. 2 OF 2	
THIS DRAWING CONTAINS INFORMATION THAT IS PROPRIETARY TO ULTI-MATE INCORPORATED AND SHOULD NOT BE USED WITHOUT WRITTEN PERMISSION.				REV	