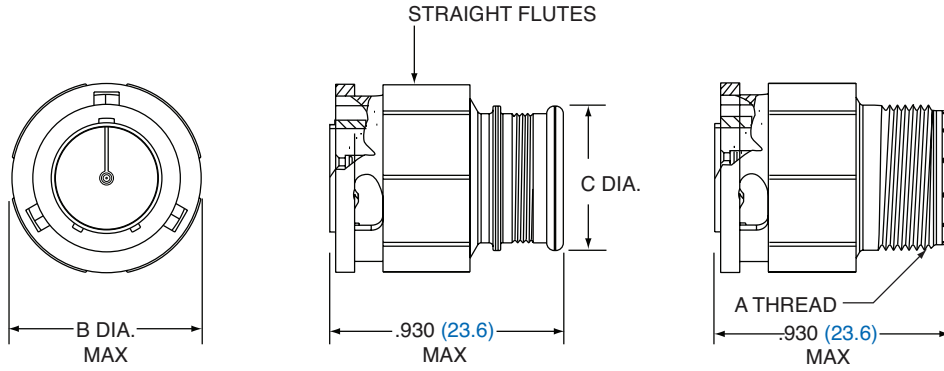
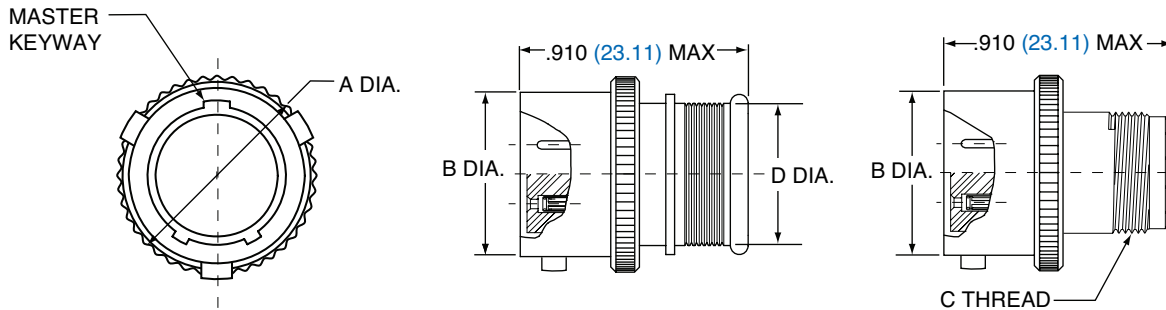


**PLUG**



SHELL SIZE	A THREAD	B DIA. MAX.		C DIA.	
		IN.	MM.	IN.	MM.
5	.2500-32 UNEF-2A	0.470	11.94	0.210	5.33
6	.3125-32 UNEF-2A	0.535	13.59	0.280	7.11
7	.4375-28 UNEF-2A	0.615	15.62	0.390	9.91
8	.5000-28 UNEF-2A	0.670	17.02	0.455	11.56
9	.5625-24 UNEF-2A	0.740	18.80	0.510	12.95
10	.6250-24 UNEF-2A	0.805	20.45	0.570	14.48
12	.6875-24 UNEF-2A	0.890	27.60	0.650	16.51
14	.9375-20 UNEF-2A	1.095	27.81	0.805	20.45

**IN-LINE**



SHELL SIZE	A MAX.		B DIA.		C THREAD	D DIA.	
	IN.	MM.	IN.	MM.		IN.	MM.
5	0.380	9.65	0.300	7.62	.2500-32 UNEF-2A	0.230	5.84
6	0.465	11.81	0.362	9.19	.3125-32 UNEF-2A	0.286	7.26
7	0.500	12.70	0.436	11.07	.4375-28 UNEF-2A	0.390	9.91
8	0.570	14.48	0.508	12.90	.5000-28 UNEF-2A	0.440	11.18
9	0.652	16.56	0.561	14.25	.5625-24 UNEF-2A	0.500	12.70
10	0.715	18.15	0.635	16.13	.6250-24 UNEF-2A	0.562	14.27
12	0.805	20.45	0.714	18.14	.6875-24 UNEF-2A	0.650	16.51
14	0.915	23.24	0.865	21.97	.9375-20 UNEF-2A	0.805	20.45

All dimensions in inches (millimeters in blue)