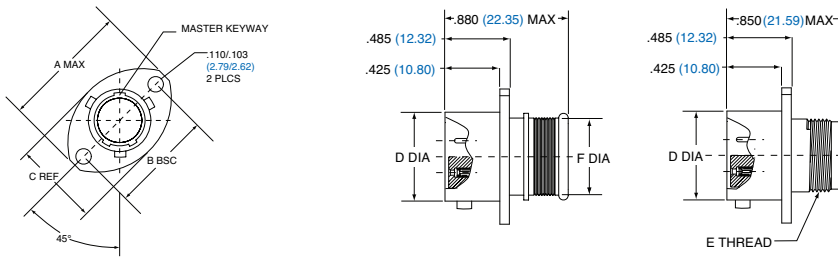
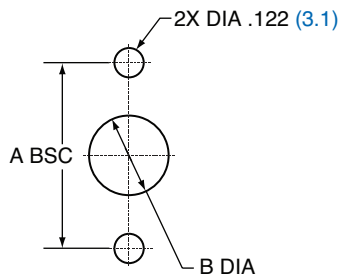


FLANGE MOUNT RECEPTACLE

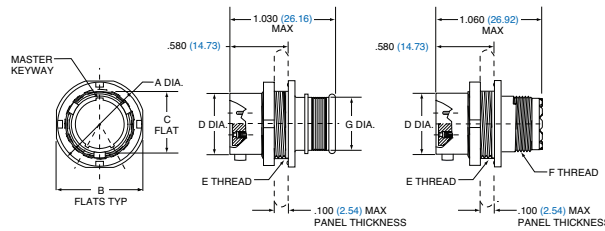


SHELL SIZE	A MAX.		B BSC.		C REF.		D DIA.		E THREAD	F DIA.	
	IN.	MM.	IN.	MM.	IN.	MM.	IN.	MM.		IN.	MM.
5	0.703	17.86	0.513	13.03	0.460	11.68	0.300	7.62	.2500-32 UNEF-2A	0.230	5.84
6	0.788	20.02	0.598	15.19	0.522	13.26	0.362	9.19	.3125-32 UNEF-2A	0.286	7.26
7	0.890	22.61	0.708	17.98	0.590	14.99	0.436	11.07	.4375-28 UNEF-2A	0.390	9.91
8	1.154	29.31	0.964	24.49	0.668	16.97	0.500	12.70	.5000-28 UNEF-2A	0.440	11.18
9	1.207	30.66	1.017	25.83	0.721	18.31	0.561	14.25	.5625-24 UNEF-2A	0.500	12.70
10	1.291	32.79	1.101	27.97	0.795	20.19	0.635	16.13	.6250-24 UNEF-2A	0.562	14.27
12	1.394	35.41	1.204	30.58	0.874	22.20	0.714	18.14	.6875-24 UNEF-2A	0.650	16.51
14	1.545	39.24	1.280	32.51	1.050	26.67	0.865	21.97	.9375-20 UNEF-2A	0.805	20.45

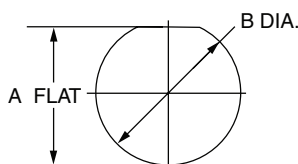


FLANGE MOUNT PANEL CUTOUTS				
SHELL SIZE	A BSC.		B DIA.	
	IN.	MM.	IN.	MM.
5	0.513	13.03	0.365	9.25
6	0.598	15.19	0.430	10.92
7	0.708	17.98	0.520	13.21
8	0.964	17.98	0.592	15.04
9	1.017	25.83	0.645	16.38
10	1.101	27.97	0.726	18.44
12	1.204	30.58	0.832	21.13
14	1.280	32.51	0.945	24.00

JAM NUT RECEPTACLES



SHELL SIZE	A DIA.		B FLAT		C FLAT		D DIA.		E THREAD	F THREAD	G DIA.	
	IN.	MM.	IN.	MM.	IN.	MM.	IN.	MM.			IN.	MM.
5	0.575	14.61	0.545	13.84	0.350	8.89	0.300	7.62	.3750-32 UNEF-2A	.2500-32 UNEF-2A	0.230	5.84
6	0.635	16.13	0.595	15.11	0.410	10.41	0.362	9.19	.4375-28 UNEF-2A	.3125-32 UNEF-2A	0.286	7.26
7	0.755	19.18	0.723	18.36	0.536	13.61	0.436	11.07	.5625-32 UN-2A	.4375-28 UNEF-2A	0.390	9.91
8	0.830	21.08	0.790	20.11	0.593	15.10	0.500	12.70	.6250-28 UN-2A	.5000-28 UNEF-2A	0.440	11.18
9	0.830	21.08	0.790	20.07	0.596	15.14	0.561	14.25	.6250-28 UN-2A	.5625-24 UNEF-2A	0.500	12.70
10	0.955	24.26	0.925	23.51	0.721	18.31	0.635	16.13	.7500-28 UN-2A	.6250-24 UNEF-2A	0.562	14.27
12	1.078	27.38	1.044	26.52	0.845	21.46	0.714	18.14	.8750-28 UN-2A	.6875-24 UNEF-2A	0.650	16.51
14	1.264	32.11	1.230	31.24	1.022	25.96	0.865	21.97	1.0625-20 UN-2A	.9375-20 UNEF-2A	0.805	20.45



JAM NUT PANEL CUTOUTS				
SHELL SIZE	A FLAT		B DIA.	
	IN.	MM.	IN.	MM.
5	0.355	9.02	0.382	9.70
6	0.415	10.54	0.445	11.30
7	0.541	13.74	0.572	14.53
8	.603/.599	15.32/15.21	0.635	16.13
9	0.601	15.27	0.643	16.33
10	.731/.727	18.57/18.47	0.76	18.29
12	0.850	21.59	0.885	22.48
14	1.031	23.19	1.072	27.23

All dimensions in inches (millimeters in blue)