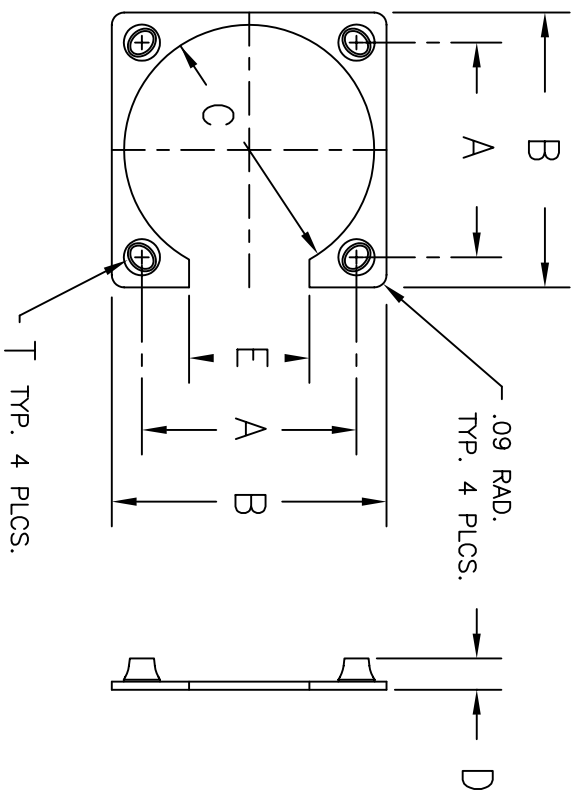


REV	DESCRIPTION	DATE	APPRVD
A	ADD-8,-10,-21	2/12	BS

PART NO.	SHELL SIZE	T THRD	A ±.003	B ±.010	C +.015 -.000	D	E ±.020	MATERIAL THICKNESS
ATM801-5	5	M2X.4	.363	.593	.283	.080/.120	.133	.031 ±.003
ATM801-6	6	M2X.4	.423	.656	.368	.080/.120	.193	.031 ±.003
ATM801-7	7	M2X.4	.483	.718	.453	.080/.120	.250	.031 ±.003
ATM801-8	8	M2X.4	.545	.765	.550	.080/.120	.325	.031 ±.003
ATM801-9	9	M3X.5	.607	.906	.568	.106/.166	.312	.040 ±.003
ATM801-10	10	M3X.5	.670	.950	.665	.106/.166	.380	.040 ±.003
ATM801-13	13	M3X.5	.812	1.110	.858	.106/.166	.515	.040 ±.003
ATM801-16	16	M3X.5	.981	1.281	1.093	.106/.166	.687	.040 ±.003
ATM801-17	17	M3X.5	1.060	1.375	1.200	.106/.166	.750	.040 ±.003
ATM801-21	21	M3X.5	1.205	1.485	1.325	.106/.166	.925	.040 ±.003



- NOTES :
1. MATERIAL - 2024-T3 ALUMINUM ALLOY PER QQ-A-250/4 OR 6061-T6 ALUMINUM ALLOY PER QQ-A-250/11. SEE TABLE FOR THICKNESS.
  2. DEBURR AND BREAK SHARP EDGES.
  3. FINISH - ALODINE PER MIL-C-5541, CLASS 1A.
  4. ALL DIMENSIONS SYMMETRICAL ABOUT CENTERLINE.

UNLESS OTHERWISE SPECIFIED DIMENSIONS ARE IN INCHES TOLERANCES ARE:		CONTRACT NO.		PREPARED		BS		2/05	
ANGLES ±									
FRACTIONS ±									
DECIMALS .XX ±									
.XXX ±									
NEXT ASSY		USED ON		APPROVED					
APPLICATION				RELEASE					
SCALE NONE		SIZE CODE IDENT NO.		DRAWING NO.		NUT PLATE		REV	
		B 0A554		ATM801		BLANK		A	
								SHT 1 OF 1	

