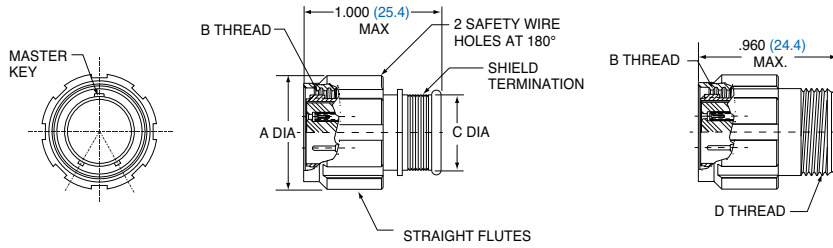
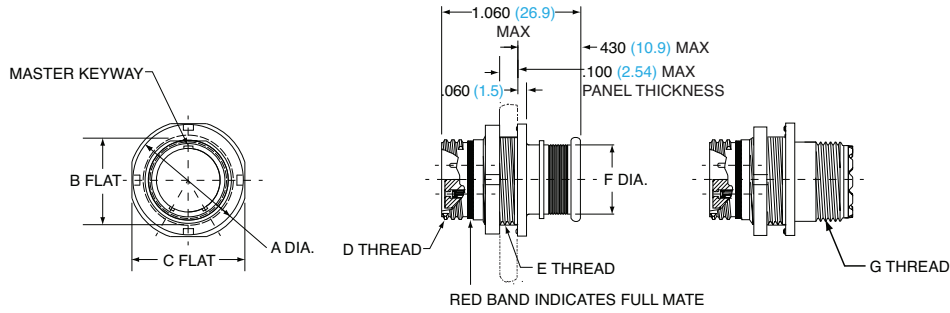


PLUG

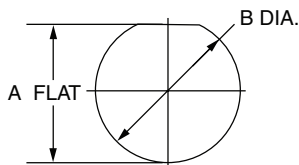


SHELL SIZE	STYLE 16		STYLE 26		B THREAD	C DIA.		D THREAD UNEF-2A
	A DIA.		A DIA.			IN.	MM.	
5	0.540	13.72	0.64	16.256	.3125-.05P-.1L-2B	0.245	6.223	.250 - 32
6	0.600	15.24	0.7	17.78	.3750-.05P-.1L-2B	0.29	7.366	.3125 - 32
7	0.680	17.27	0.78	19.812	.4375-.05P-.1L-2B	0.39	9.906	.4375 - 28
8	0.750	19.05	0.85	21.59	.5000-.05P-.1L-2B	0.445	11.303	.5000 - 28
9	0.810	20.57	0.91	23.114	.5625-.05P-.1L-2B	0.5	12.7	.5625 - 24
10	0.880	22.35	0.98	24.892	.6250-.05P-.1L-2B	0.56	14.224	.6250 - 24
13	1.050	26.67	1.15	29.21	.8125-.1P-.2L-2B	0.65	16.51	.6875 - 24
16	1.240	31.50	1.34	34.036	1.000-.1P-.2L-2B	0.805	20.447	.9375 - 20
17	1.300	33.02	1.4	35.56	1.0625-.1P-.2L-2B	0.85	21.59	.9375 - 20
21	1.550	39.37	1.65	41.91	1.3125-.1P-.2L-2B	1.11	28.194	1.1875 - 18

JAM NUT RECEPTACLE



SHELL SIZE	A DIA.		B FLAT		C FLAT	D THREAD	E THREAD	F DIA.		G THREAD
	IN.	MM.	IN.	MM.				IN.	MM.	
5	0.575	14.61	0.350	8.89	0.545	.3125-.05P-.1L-2A	.3125-.05P-.1L-2A	0.245	6.22	.2500-32 UN-2A
6	0.635	16.13	0.410	10.41	0.595	.3750-.05P-.1L-2A	.3750-.05P-.1L-2A	0.290	7.37	.3125-32 UN-2A
7	0.755	19.18	0.536	13.61	0.723	.4375-.05P-.1L-2A	.4375-.05P-.1L-2A	0.390	9.91	.4375-28 UN-2A
8	0.755	19.18	0.536	13.61	0.723	.5000-.05P-.1L-2A	.5000-.05P-.1L-2A	0.445	11.30	.5000-28 UN-2A
9	0.830	21.08	0.596	15.14	0.790	.5625-.05P-.1L-2A	.5625-.05P-.1L-2A	0.500	12.70	.5625-24 UN-2A
10	0.890	22.61	0.658	16.71	0.855	.6250-.05P-.1L-2A	.6250-.05P-.1L-2A	0.560	14.22	.6250-24 UN-2A
13	1.078	27.38	0.845	21.46	1.044	.8125-.1P-.2L-2A	.8125-.1P-.2L-2A	0.650	16.51	.6875-24 UN-2A
16	1.264	32.11	1.022	25.96	1.230	1.0000-.1P-.2L-2A	1.0000-.1P-.2L-2A	0.805	20.45	.9375-20 UN-2A
17	1.325	33.66	1.096	27.84	1.290	1.0625-.1P-.2L-2A	1.0625-.1P-.2L-2A	0.850	21.59	.9375-20 UN-2A
21	1.625	41.28	1.345	34.16	1.577	1.3125-.1P-.2L-2A	1.3125-.1P-.2L-2A	1.110	28.19	1.1875-18 UN-2A



CUTOUT DIMENSIONS

SHELL SIZE	JAM NUT PANEL CUTOUT			
	A FLAT		B DIA.	
	IN +/- .002	MM +/- 0.05	IN +/- .002	MM +/- 0.05
5	0.356	9.04	0.385	9.78
6	0.416	10.57	0.447	11.35
7	0.542	13.77	0.572	14.53
8	0.542	13.77	0.572	14.53
9	0.602	15.29	0.635	16.13
10	0.666	16.62	0.697	17.7
13	0.851	21.62	0.885	22.48
16	1.028	26.11	1.075	27.31
17	1.102	27.99	1.135	28.83
21	1.354	34.39	1.385	35.18

All dimensions in inches (millimeters in blue)