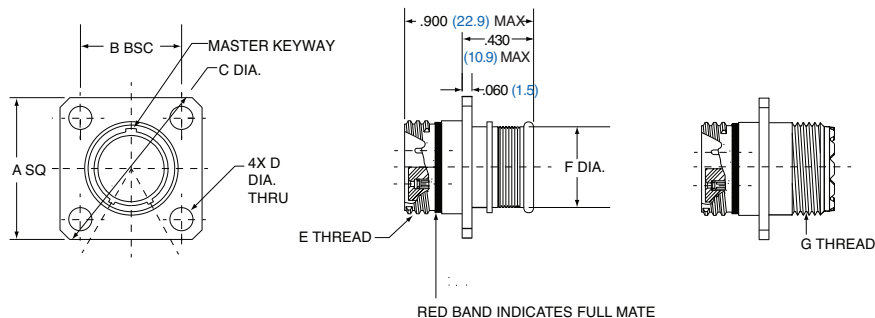
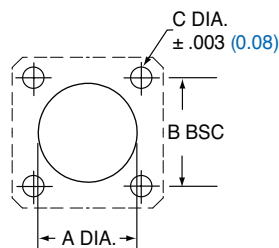


SQUARE FLANGED RECEPTACLE

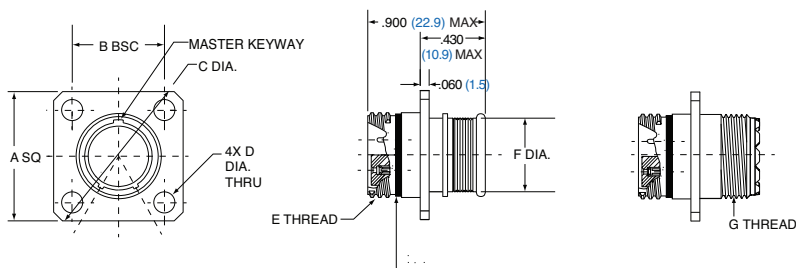


SHELL SIZE	A		B BSC		C DIA.		D DIA.		E THREAD	F DIA.		G THREAD UN-2A
	IN.	MM.	IN.	MM.	IN.	MM.	IN. ± .003	MM. ± .08		IN.	MM.	
5	0.530	13.46	0.363	9.22	0.680	17.27	0.093	2.36	.3125-.05P-.1L-2A	0.245	6.22	.2500-32
6	0.590	14.99	0.423	10.74	0.750	19.05	0.093	2.36	.3750-.05P-.1L-2A	0.290	7.37	.3125-32
7	0.650	16.51	0.483	12.27	0.850	21.59	0.093	2.36	.4375-.05P-.1L-2A	0.390	9.91	.4375-28
8	0.712	18.08	0.545	13.84	0.938	23.83	0.093	2.36	.5000-.05P-.1L-2A	0.445	11.30	.5000-28
9	0.850	21.59	0.607	15.42	1.125	28.58	0.128	3.25	.5625-.05P-.1L-2A	0.500	12.70	.5625-24
10	0.890	22.61	0.670	17.02	1.188	30.18	0.128	3.25	.6250-.05P-.1L-2A	0.560	14.22	.6250-24
13	1.030	26.16	0.812	20.62	1.375	34.93	0.128	3.25	.8125-.1P-.2L-2A	0.650	16.51	.6875-24
16	1.219	30.96	0.981	24.92	1.625	41.28	0.128	3.25	1.0000-.1P-.2L-2A	0.805	20.45	.9375-20
17	1.280	32.51	1.060	26.92	1.700	43.18	0.128	3.25	1.0625-.1P-.2L-2A	0.850	21.59	.9375-20
21	1.430	36.32	1.205	30.61	1.938	49.23	0.128	3.25	1.3125-.1P-.2L-2A	1.110	28.19	1.1875-18



FLANGE MOUNT PANEL CUTOUT						
SHELL SIZE	A DIA.		B DIA.		C DIA.	
	IN.	MM.	IN.	MM.	IN.	MM.
5	0.330	8.38	0.363	9.22	0.093	2.36
6	0.390	9.91	0.423	10.74	0.093	2.36
7	0.450	11.43	0.483	12.27	0.093	2.36
8	0.510	12.95	0.545	13.84	0.093	2.36
9	0.575	14.61	0.607	15.42	0.128	3.25
10	0.640	16.26	0.670	17.02	0.128	3.25
13	0.825	20.96	0.812	20.65	0.128	3.25
16	1.015	25.78	0.981	24.92	0.128	3.25
17	1.075	27.31	1.060	26.92	0.128	3.25
21	1.325	33.66	1.205	30.61	0.128	3.25

IN-LINE RECEPTACLE



SHELL SIZE	A DIA.		B FLAT		E THREAD	D DIA.		G THREAD UNEF-2A
	IN.	MM.	IN.	MM.		IN.	MM.	
5	0.355	9.02	0.325	8.13	.3125-.05P-.1L-2A	0.245	6.22	.2500-32
6	0.415	10.54	0.385	9.78	.3750-.05P-.1L-2A	0.29	7.37	.3125-32
7	0.48	12.19	0.445	11.3	.4375-.05P-.1L-2A	0.39	9.91	.4375-28
8	0.54	13.72	0.51	12.95	.5000-.05P-.1L-2A	0.445	11.3	.5000-28
9	0.605	15.37	0.575	14.61	.5625-.05P-.1L-2A	0.5	12.7	.5625-24
10	0.665	16.89	0.635	16.13	.6250-.05P-.1L-2A	0.56	14.22	.6250-24
13	0.855	21.72	0.825	20.96	.8125-.1P-.2L-2A	0.65	16.51	.6875-24
16	1.04	26.42	1.01	25.65	1.0000-.1P-.2L-2A	0.805	20.44	.9375-20
17	1.11	28.19	1.07	27.18	1.0625-.1P-.2L-2A	0.85	21.59	.9375-20
21	1.405	35.69	1.385	35.18	1.3125-.1P-.2L-2A	1.11	28.19	1.1875-18

All dimensions in inches (millimeters in blue)