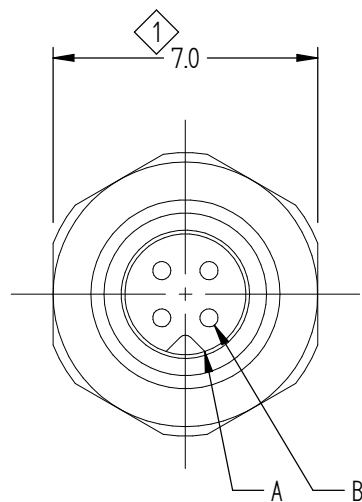
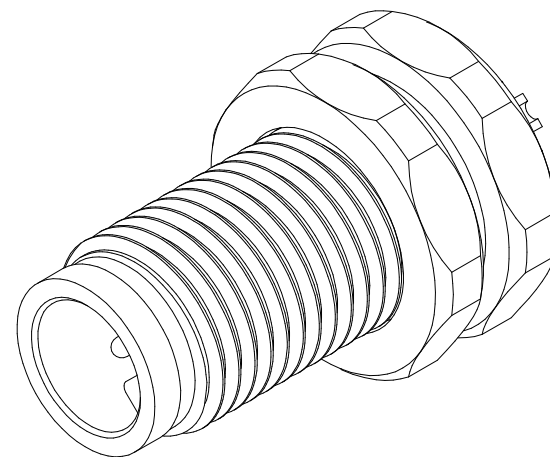
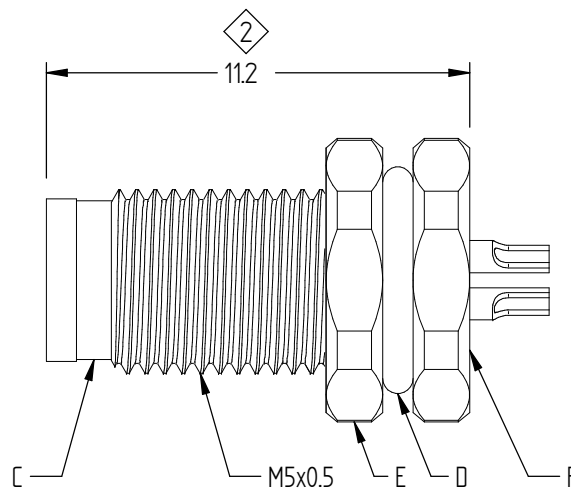


REVISIONS					REV	ZONE	ECO#	DESCRIPTION	DRAW	APPD	DATE
					-			INITIAL RELEASE	KC	PK	1/30/17



M5 RECEPTACLE



# NOTES:

1. M5, MALE, CODE A
2. IP RATING: IP 67 IN LOCKED CONDITION
3. STANDARD: IEC 61076-2-105
4. TEMPERATURE RANGE: -25C TO 90C
5. MATERIALS:

NO.	NAME	DESCRIPTION
A	HOUSING	M5 3P BLACK MALE HOUSING
B	TERMINAL	M5 MALE TERMINAL, BRASS WITH GOLD PLATING
C	SCREW	M5x0.5 SCREW, BRASS WITH NICKEL PLATING
D	RING	BLACK O-RING
E	NUT	M5x0.5 NUT, BRASS WITH NICKEL PLATING
F	POTTING	BLACK EPOXY RESIN

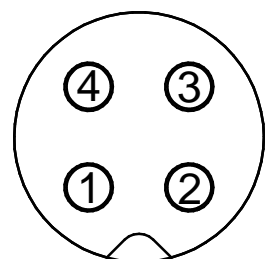
6. ITEMS IDENTIFIED WITH DIAMOND MUST BE INSPECTED
7. REFERENCE PACKAGING SPECIFICATIONS PER DOC # PKG-001
8. RoHS COMPLIANT

PART NUMBER		IPM-M5A4M-SC	
TITLE		REPT, M5, 4P M, SLD R CUP A	
UNLESS OTHERWISE SPECIFIED, DIMENSIONS ARE IN MM		DRAWN	
TOLERANCE EXCEPT AS NOTED:		K.CHODZINSKI	
105 - 61 ± 0.1		DATE	
1-6 - 301 ± 0.2		1/30/2017	
IMPERIAL DIMENSIONS ARE FOR REFERENCE ONLY		ENGINEER	
THIRD ANGLE PROJECTION		B. HALUSKA	
		DATE	
		1/30/2017	
		APPROVED BY	
		P.KIM	
		DATE	
		1/30/2017	

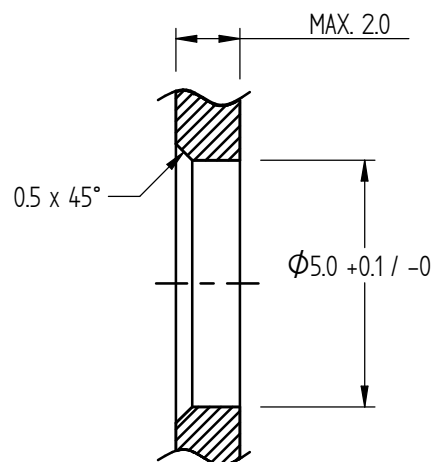
**PEI-Genesis**

2180 Hornig Road, Philadelphia, PA 19116

NOTICE OF CONFIDENTIALITY:  
THIS DRAWING IS THE PROPERTY OF PEI-Genesis. ALL RIGHTS RESERVED. REPRODUCTION BY ANY MEANS OR DISTRIBUTION TO THIRD PARTIES IS STRICTLY PROHIBITED WITHOUT THE WRITTEN PERMISSION OF AN AUTHORIZED AGENT OF PEI-Genesis.



PIN ASSIGNMENT



RECOMMENDED PANEL CUT-OUT