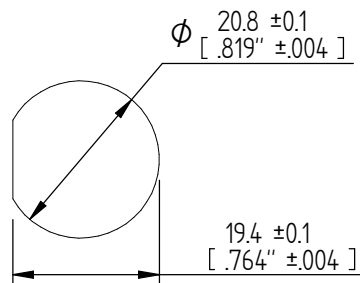
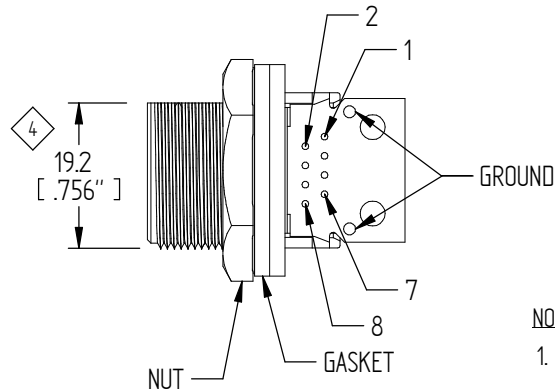
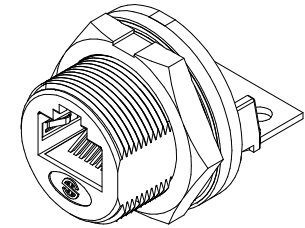
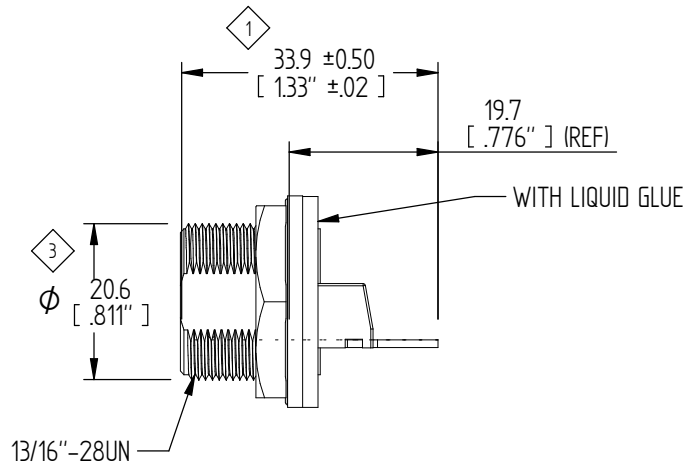
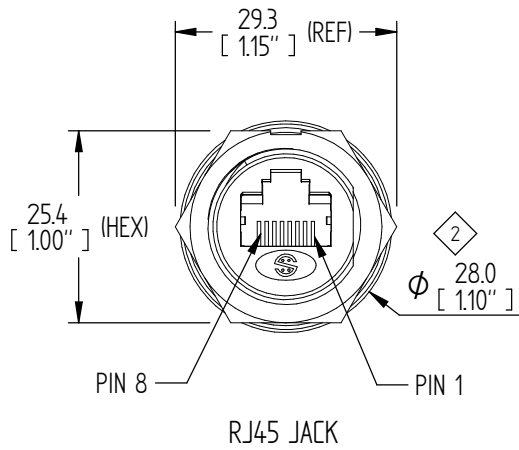


| REVISIONS | | | | | REV | ZONE | ECO# | DESCRIPTION | DRAW | APPD | DATE |
|-----------|--|--|-----------------|----|-----|----------|------|-------------|------|------|------|
| - | | | INITIAL RELEASE | KC | PK | 11/10/16 | | | | | |
| A | | | ADDED RoHS NOTE | KC | PK | 2/15/17 | | | | | |



RECOMMENDED PANEL CUT-OUT

NOTE: CAD GENERATED DRAWING DO NOT UPDATE MANUALLY.

NOTES:

1. WATERPROOF RATE: IP68 (NO INGRESS OF DUST/PROTECTED AGAINST HARMFUL EFFECT CAUSED IN 1 METER WATER WITHIN 24 HOURS)
2. TEMPERATURE RANGE: -40°C TO +105°C
3. MAX PANEL THICKNESS: 4.0MM (WITHOUT CAP CHAIN)
4. MATERIAL: HOUSING: NYLON, BLACK PIN: COPPER ALLOY, GOLD PLATED SCREW NUT: NYLON, BLACK
5. ITEMS IDENTIFIED WITH DIAMOND (◇...◇) MUST BE INSPECTED.
6. REFERENCE PACKAGING SPECIFICATIONS PER DOC# PKG-001
7. RoHS COMPLIANT.

| | | | | | |
|---|---------|----------------------------|------------------|------------------|---------------|
| PART NUMBER | | IPMOD-45FSP | | REV | A |
| TITLE | | JACK, PNL RJ45 WS / PCB | | DRAWN | KCHOD |
| UNLESS OTHERWISE SPECIFIED, DIMENSIONS ARE IN MM | | TOLERANCE EXCEPT AS NOTED: | | DATE: 11/10/2016 | |
| DECIMAL X +0.25 | XX +0.1 | XXX ±0.05 | ANGLES ±P | ENGINEER | DKAPLACHINSKI |
| IMPERIAL DIMENSIONS ARE FOR REFERENCE ONLY | | | DATE: 11/10/2016 | | |
| THIRD ANGLE PROJECTION | | APPROVED BY | | P.KIM | |
| DATE CODE: 2A589 | | SIZE | A | SCALE | NTS |
| SHEET | | 1 OF 1 | | REV | A |
| <small>© COPYRIGHT 2006 PEI-GENESIS ENGINEERING PROJECT DEVELOPMENT</small> | | | | | |

PEI-Genesis
2180 Hornig Road, Philadelphia, PA 19116

NOTICE OF CONFIDENTIALITY
THIS DRAWING IS THE PROPERTY OF PEI-Genesis. ALL RIGHTS RESERVED. REPRODUCTION BY ANY MEANS OR DISTRIBUTION TO THIRD PARTIES IS STRICTLY PROHIBITED WITHOUT THE WRITTEN PERMISSION OF AN AUTHORIZED AGENT OF PEI-GENESIS.